

PLANET GRANITE

PLANETGRANITEDAYTONA.COM



Full Catalog | Euro & Framed Series Cabinetry

TABLE OF CONTENTS

1. Quick Reference

- Reference and tips from PG1.02-1.03

2. Kitchen at a Time Program

- Ordering Process.....2.02
- Order Lead Times.....2.03
- Order Pick-Up Procedures.....2.04
- Shipping Program.....2.05-2.06
- Display Program2.07

3. PG Euro Series

- In Stock Door Styles.....3.02
- Standard Product.....3.03-3.04
- Product Specifications.....3.05-3.14
- Cabinet Care.....3.15

4. PG Framed Series

- In Stock Door Styles.....4.02
- Standard Product.....4.03
- Product Specifications.....4.04-4.15
- Cabinet Care.....4.16

5. Other Products Offered

- Other Brands Available.....5.02

6. Warranty Program

- Warranty.....6.02
- Glaze Awareness/Painted Disclaimer/Thermofoil Doors.....6.03
- Warranty Replacement Program.....6.04

7. Miscellaneous

- Return Policy.....7.02
- Recommended Resources.....7.03
- Quote Forms/List Pricing.....7.04-7.10
- Dealer Notes.....7.11-7.12

PLANET GRANITE

PLANETGRANITEDAYTONA.COM

Section 1.01

Quick Reference





PLANETGRANITEDAYTONA.COM

QUICK REFERENCE GUIDE / USEFUL TIPS

- What is the best way to contact Planet Granite?
 - You can call us at the number in the header of this page, email Customer Service, use the 'Contact Us' link on our website, or contact your sales rep directly.
- What are Planet Granite's business hours?
 - Our normal business hours are as follows:
 - Office Hours: Mon - Fr: 8:00 am - 4:30 pm
 - Warehouse Hours: Mon - Fri: 8:00 am - 4:00 pm
 - Closed on Saturdays and Sundays
 - You will be notified via email or you can check our website for special holiday hours.
- How can I submit an order?
 - All orders should be submitted through our website, **faxed, emailed or by appointment.**
- Where can I find Planet Granites' website?
 - www.planetgranitedaytona.com
 -

Section 2.01

Kitchen at a Time (KAT) Program



ORDER LEAD TIMES

Immediate order fulfillment cannot be guaranteed for walk in customers. We strongly encourage all customers to be aware of the order lead times outlined below.

Flat-Pack (unassembled) PG Euro Series Orders

- **WITHIN 5 BUSINESS DAYS:** Flat-Pack orders for **PG Euro Series** will be ready for pick up or to be shipped within 5 business days from order confirmation
- **FOR LOCAL PICK UP:** If a confirmed pick-up order is ready before the fifth business day, we will contact you to let you know the order is available for pick up.

Flat-Pack (unassembled) PG Framed Series Orders

- **WITHIN 4 BUSINESS HOURS:** Flat-Pack orders for **PG Framed Series** will be ready for pick up or to be shipped within 4 business hours from order confirmation
 - Orders to be shipped must be confirmed before 12:00 pm to be shipped the same business day.
- **FOR LOCAL PICK UP:** If a confirmed pick-up order is ready before the 4 hour mark, we will contact you to let you know the order is available for pick up.

Assembled Orders (PG Euro and Framed Series)

- **WITHIN 10 BUSINESS DAYS:** Assembled orders will be ready for pick up or to be shipped within 10 business days from confirmation. We do not expect the majority of orders to take the full 10 business days, however, it is important to keep this lead time in mind when placing assembled orders.
- **FOR LOCAL PICK UP:** We will contact you to let you know when the order is fully assembled and available for pick up.

Expediting Order Fee (PG Euro and Framed Series)

- **20%:** If you would like to rush your order with us, please note, that you will be charged a 20% order expediting fee. This fee is 20% of materials cost and will move your order to the next in line, but behind any already confirmed expedited orders.

Storage Fees for Late Pick-Ups

- If your order is not picked up from us within 3 business days after the order is complete, the order will be subject to a \$25 per day storage fee that will take effect after the third business day.
- If you wish to confirm an order to hold inventory, but not pick up the order within our standard lead times, please call us to arrange a pick-up appointment.

SHIPPING PROGRAM

Shipping costs are based on the total weight of your order.

A freight cost grid is included in this catalog to show you our shipping rates.

- These shipping rates are for business to business, dock to commercial dock delivery. These prices are tailored to your shipping address only.
- Applicable fuel surcharges may apply.
- Delivery time frame and progress tracking will be available to you through the freight carrier's web site via the tracking number you are emailed upon order shipment.

Any delivery outside the parameters noted above may incur additional charges. These accessorial charges, such as lift gate and home delivery, can be found on the carrier's web site. Or, feel free to call our Customer Service Team.

Small items may be shipped via a small package carrier such as UPS. A damage disclaimer may need to be signed. Please check with Customer Service.

STANDARD SHIPPING RATES

FLORIDA SHIPPING RATES (shipping within the state of Florida)

WEIGHT	COST*	NOTES
0-500 lbs	\$100	
501-1000 lbs	\$160	
1001-1500 lbs	\$230	
1501-2000 lbs	\$250	
2001-2500 lbs	\$280	
2501-3000 lbs	\$340	
Over 3000 lbs		Please call Customer Service for a quote

- These rates are for business to business, dock to commercial dock delivery, within the state of Florida.
- Applicable fuel surcharges may apply.
- Delivery time frame and progress tracking will be available to you through the carrier's website via a tracking number.
- Any delivery outside the parameters noted above will incur additional charges. These accessorial charges, such as lift gate and home delivery, can be found on the carrier's web site. Or, feel free to call our Customer Service Team.
- Small items may be shipped via small package carrier. A damage disclaimer may need to be signed. Please check with Customer Service.

*These rates are for unassembled cabinetry coming from Pinellas Park, FL only. Assembled cabinetry ships for an additional \$7 per cabinet (plus assembly fee per cabinet).

OUT OF STATE SHIPPING RATES

OUT OF STATE SHIPPING RATES (shipping within the Southeastern United States)

WEIGHT	COST*	NOTES
0-500 lbs	\$160	
501-1000 lbs	\$270	
1001-1500 lbs	\$390	
1501-2000 lbs	\$440	
2001-2500 lbs	\$550	
2501-3000 lbs	\$660	
Over 3000 lbs		Please call Customer Service for a quote

- These rates are for business to business, dock to commercial dock delivery, outside the state of Florida.
- Applicable fuel surcharges may apply.
- Delivery time frame and progress tracking will be available to you through the carrier's website via a tracking number.
- Any delivery outside the parameters noted above will incur additional charges. These accessorial charges, such as lift gate and home delivery, can be found on the carrier's web site. Or, feel free to call our Customer Service Team.
- Small items may be shipped via small package carrier. A damage disclaimer may need to be signed. Please check with Customer Service.

*These rates are for unassembled cabinetry coming from HDI in Pinellas Park, FL only. Assembled cabinetry ships for an additional \$7 per cabinet (plus assembly fee per cabinet).

**We ship nationwide. Please contact us for a tailored shipping rate program if your business is outside the Southeastern United States.

PLANET GRANITE

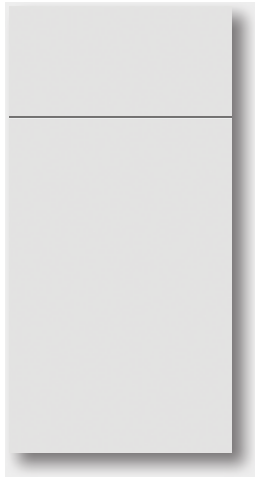
PLANETGRANITEDAYTONA.COM

Section 3.01 Euro Series



PLANETGRANITEDAYTONA.COM

EURO SERIES DOOR STYLES



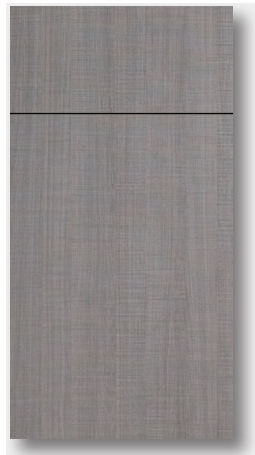
Cristallo
White

High gloss white thermofoil slab door with 1/16" reveal.



Tuscan
Espresso

Brown textured melamine slab door with 1/16" reveal.



Tuscan
Smoke

Grey textured melamine slab door with 1/16" reveal.

PLANETGRANITEDAYTONA.COM

STANDARD PRODUCT

MATERIALS AND CONSTRUCTION

Case

- Frameless construction using premium, engineered wood panels.
- Sides and back panels are 3/4" white melamine veneered and fully cased with white edge banding. Interiors are white.
- Shelves are 3/4" thick, adjustable and edge banded. They are full depth with metal shelf clips in wall and base cabinets.
- Sink base front rails are water resistant aluminum.
- Exteriors are white. Additional 3/4" overlay panel to match doors is available separately.

Drawers

- Blum, full extension and soft closing. Sides are white metal. Bottom and back is 5/8" white melamine. Fronts on optional roll out tray are white melamine.

Hinges

- European style soft closing hinge, 6 way adjustable. 110 degree opening.

Doors

- Tuscan Series: Textured melamine, slab 7/8" thick.
- Cristallo Series: High gloss thermofoil, slab door 7/8" thick.

Reveals

- All doors and drawer fronts have a 1/16" reveal.

Toe Kick

- Cabinets are on plastic, adjustable legs.
- Toe kick cover is plastic with a premium brushed aluminum front plate and is water resistant. Features a gasket for proper seal to the floor. Can be trimmed to fit.

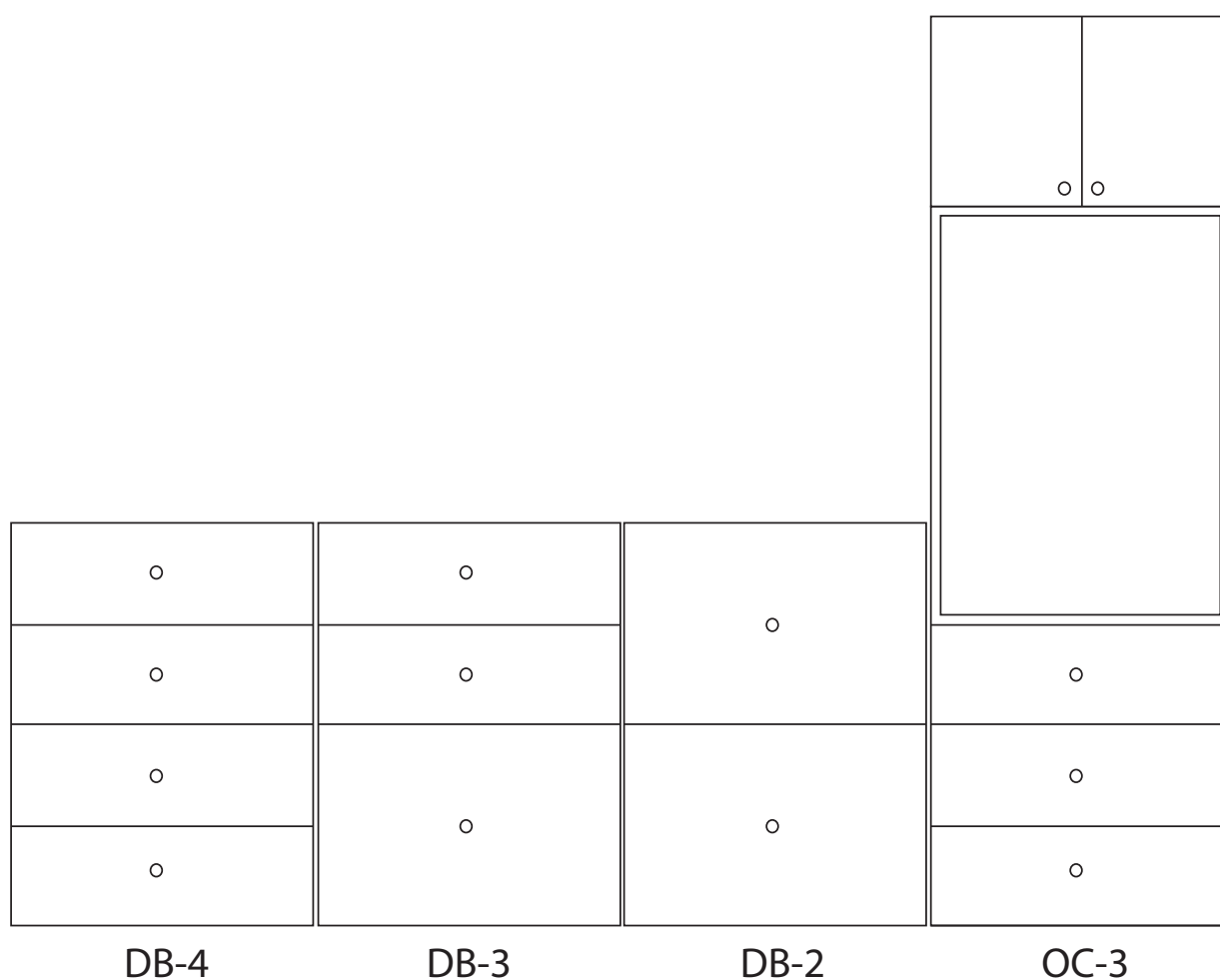
Drawer Fronts

- Small drawer fronts height of 7 3/8"
- Large drawer fronts height of 14 7/8"
- All drawer cabinets are designed to align perfectly when placed next to additional drawer cabinets, providing for a very clean and symmetrical design. See spec drawing on next page.

PLANETGRANITEDAYTONA.COM

STANDARD PRODUCT (cont.)

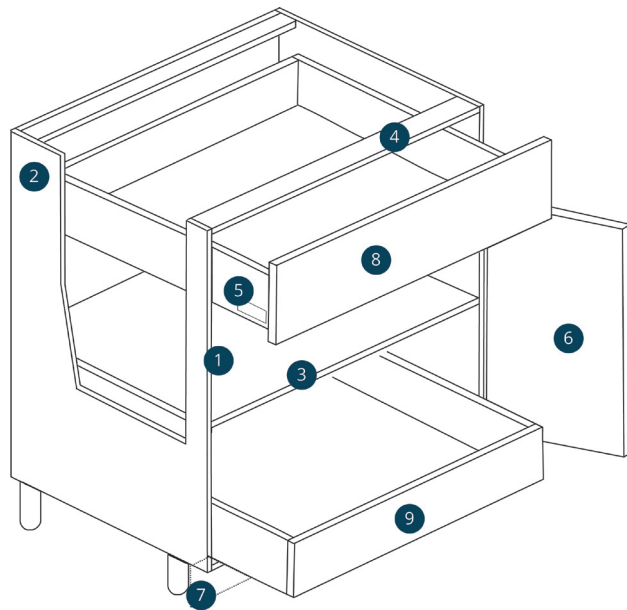
DRAWER CABINET SPEC DRAWING



Spec drawing showing drawer front alignment.
Not drawn to scale.

PLANETGRANITEDAYTONA.COM

PRODUCT SPECIFICATIONS/NOTES



- 1 Frameless construction using premium, engineered wood panels, fully encased with white edgebanding.
- 2 Slides and back panels are 3/4" thick white melamine veneered. Integrated finished panels or 3/4" thick overlay panels are available for exposed ends.
- 3 Shelves are full depth 3/4" thick, adjustable and edge banded. Included shelf clips are metal. Shelves are not included in sink base cabinets.
- 4 Front rail of sink base cabinets is water resistant aluminum. Front rail of standard base cabinets is MDF melamine.
- 5 Drawer boxes are Blum, full extension and soft closing. Sides are white metal. Bottom and back is 5/8" thick melamine.

- 6 Doors are 7/8" thick slab. Door reveals are 1/16". Hinges are European 6-way adjustable and soft closing.
- 7 Base cabinets are on plastic, adjustable legs and need additional toe kick plate. Toe kick material comes in 8' lengths or is sold by the foot. Toe kick is plastic with a brushed aluminum front plate. Toe kick features a rubber gasket for proper seal to the floor. Dealers opting for door matched toe kick can use OLF496.
- 8 Drawer reveals are 1/16". Small drawer front heights are 7 3/8". Large drawer front heights are 14 7/8". All drawer fronts align perfectly when placed next to each other, providing for a very clean and symmetrical design. See spec drawing on page 4 of catalog.
- 9 Optional roll trays (ROT) are available for certain base and pantry cabinets. The optional roll trays feature the same drawer system as cabinet drawers. The front panel is white melamine, fully encased.

DOOR CLEARANCE

Because of the full overlay, clearance of doors and drawers must be taken into consideration during the design process to assure proper operation of all doors, drawers and roll trays.

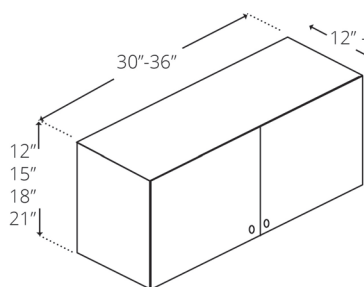
SINGLE DOOR CABINET HINGING

All single door cabinets feature one cabinet side prepped for hinges. For assembled jobs, please specify hinged side for all single door cabinets at time of order.

VANITY CABINETS

All vanity cabinets are 34 1/2" tall and 21" deep. Full height door vanity cabinets do not come with a modesty panel to cover the sink when the doors are open.

In keeping with a policy of continuous refinement, Harbor Distributors, Inc. reserves the right to alter specifications without general notice or obligation to make similar changes in previously produced product.

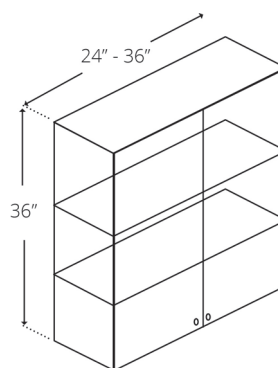


DOUBLE DOOR
12" - 21" HIGH
WALL CABINETS

W3012
W3612
W3015
W3315
W3615

W3018
W3618
W3021
W3612-24*
W3618-24*

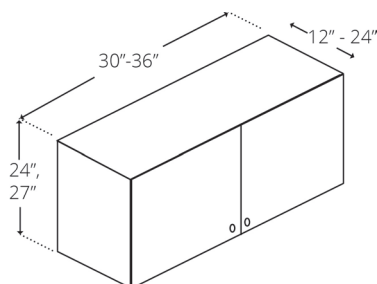
*24" deep



DOUBLE DOOR
36" HIGH
WALL CABINETS

W2436
W2736
W3036
W3336
W3636

*Includes 2 shelves

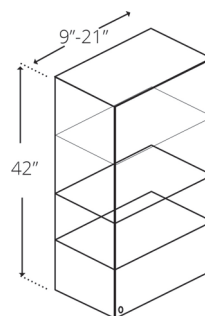


DOUBLE DOOR
24" - 27" HIGH
WALL CABINETS

W3024
W3624
W3027

W3624-24*

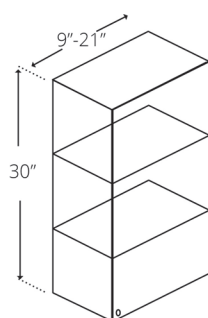
*24" deep
Includes 1 shelf



SINGLE DOOR
42" HIGH
WALL CABINETS

W0942
W1242
W1542
W1842
W2142

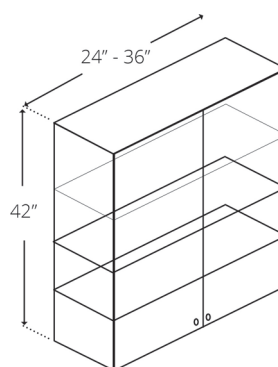
*Includes 3 shelves



SINGLE DOOR
30" HIGH
WALL CABINETS

W0930
W1230
W1530
W1830
W2130

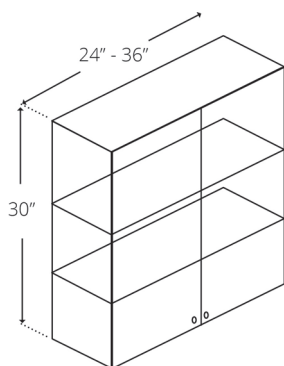
*Includes 2 shelves



DOUBLE DOOR
42" HIGH
WALL CABINETS

W2442
W2742
W3042
W3342
W3642

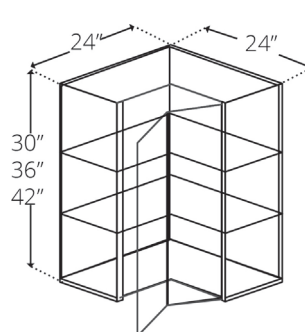
*Includes 3 shelves



DOUBLE DOOR
30" HIGH
WALL CABINETS

W2430
W2730
W3030
W3330
W3630

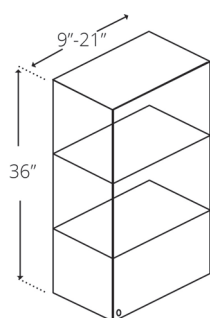
*Includes 2 shelves



BI-FOLD DOOR
30" - 42" HIGH
CORNER WALL CABINETS

CW2430
CW2436
CW2442

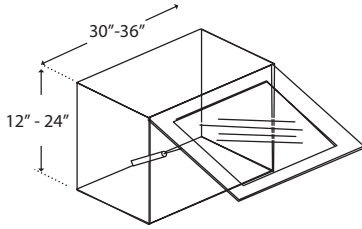
*30"-36" include 2
shelves. 42" includes
3 shelves



SINGLE DOOR
36" HIGH
WALL CABINETS

W0936
W1236
W1536
W1836
W2136

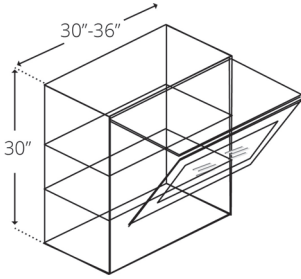
*Includes 2 shelves



LIFT UP DOOR
12" - 24" HIGH
WALL CABINETS

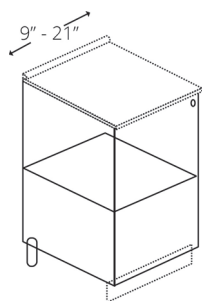
W2415LIFT	W3615LIFT
W2418LIFT	W3018LIFT
W2421LIFT	W3618LIFT
W3012LIFT	W3024LIFT
W3612LIFT	W3624LIFT
W3015LIFT	

*Includes 1 shelf
Aluminum Door
Glass sold separately



DOUBLE LIFT UP DOOR
30" HIGH
WALL CABINETS
W3030LIFT

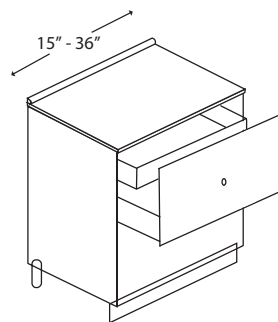
*Includes 2 shelves
Aluminum Door
Glass sold separately



**SINGLE
FULL HEIGHT DOOR
BASE CABINETS**

B09FHD (no shelf)
B12FHD
B18FHD
B21FHD

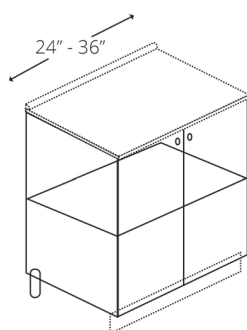
*Includes 1 shelf



**TWO DRAWER
WITH INSIDE DRAWER
BASE CABINETS**

DB15-2SP DB30-2SP
DB18-2SP DB33-2SP
DB21-2SP DB36-2SP
DB24-2SP

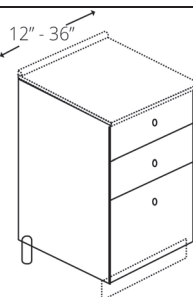
*Drawer front 14
7/8" H



**DOUBLE
FULL HEIGHT DOOR
BASE CABINETS**

B24FHD
B27FHD
B30FHD
B33FHD
B36FHD

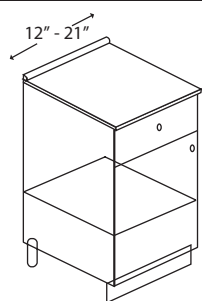
*Includes 1 shelf



**THREE DRAWER
BASE CABINETS**

DB12-3 DB30-3
DB15-3 DB33-3
DB18-3 DB36-3
DB21-3
DB24-3

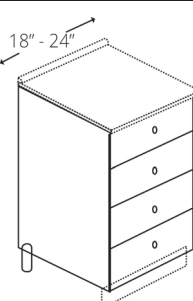
*Top 2 drawer fronts 7 3/8" H
Lower drawer front 14 7/8" H



**SINGLE
DOOR & DRAWER
BASE CABINETS**

B12
B15
B18
B21

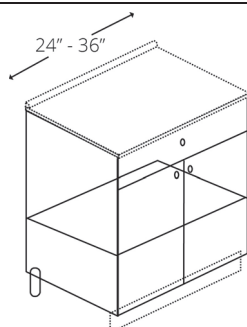
*Includes 1 shelf



**FOUR DRAWER
BASE CABINETS**

DB18-4
DB21-4
DB24-4

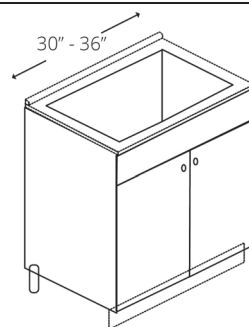
*Drawer fronts 7 3/8" H



**SINGLE DRAWER
DOUBLE DOOR
BASE CABINETS**

B24
B27
B30
B33
B36

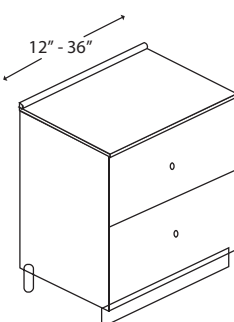
*Includes 1 shelf



**SINGLE FALSE DRAWER
DOUBLE DOOR
SINK BASE CABINETS**

SB30
SB33
SB36

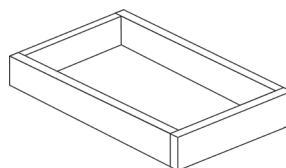
*Features water resistant alu-
minum top rail and floor liner



**TWO DRAWER
BASE CABINETS**

DB12-2 DB30-2
DB15-2 DB33-2
DB18-2 DB36-2
DB21-2
DB24-2

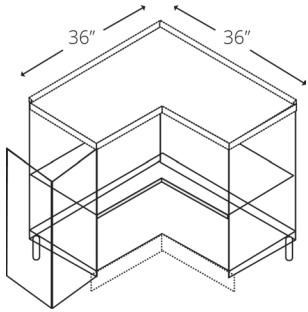
*Drawer front 14
7/8" H



**ROLL OUT TRAY
SOFT CLOSE**

ROT18 ROT33
ROT21 ROT36
ROT24
ROT27
ROT30

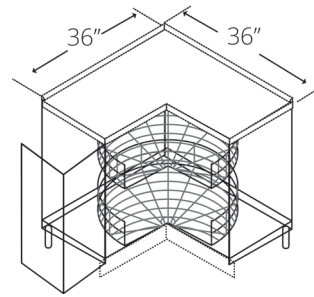
*Blum drawer box with full
extension soft closing glides.
Works in vanities as well.



EASY REACH
CORNER BASE CABINET
WITH SHELF

ER36

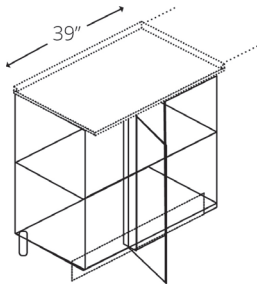
*Includes 1 shelf



EASY REACH
CORNER BASE CABINET
WITH LAZY SUSAN

ER36LS

*Includes 2 metal lazy susan
trays



SINGLE
FULL HEIGHT DOOR
BLIND BASE CABINET

BLINDB42FHD

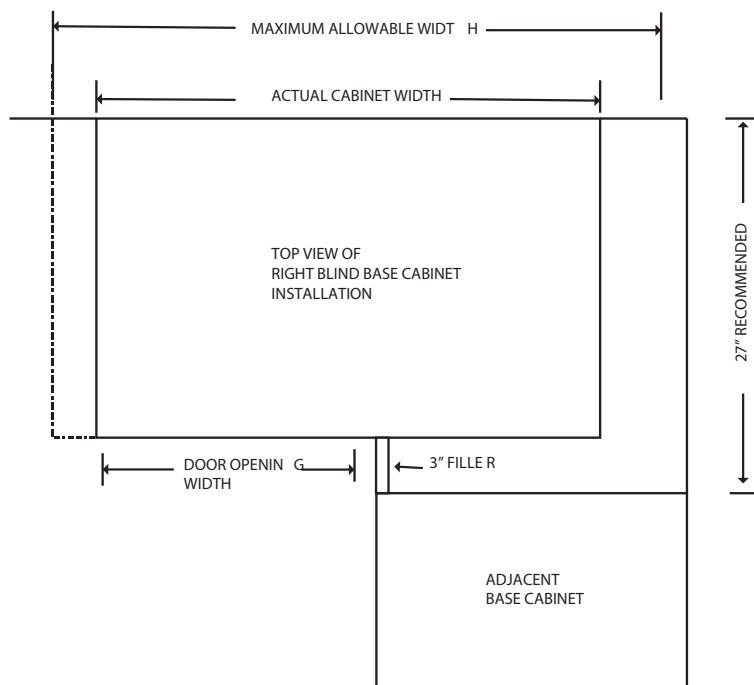
Actual cabinet is 39"
Overlay filler not included

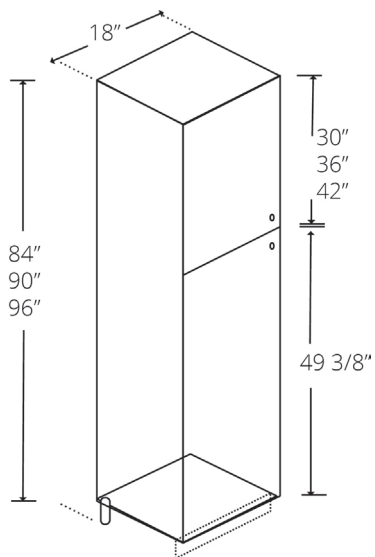
Blind right is shown in picture
*Includes 1 shelf

BLIND BASE CABINET INSTALLATION RECOMMENDATIONS

SKU	ACTUAL CABINET WIDTH	MIN/MAX RECOM - MENDED DIMEN - SIONS FOR INSTAL - LATION	WIDTH OF DOOR OPENING
BLINDB42FHD	39"	42" - 45"	14 7/8"

*NOTE: MINIMUM PULL RECOMMENDATION INCLUDES 3" STILE REVEAL
TO CORNER

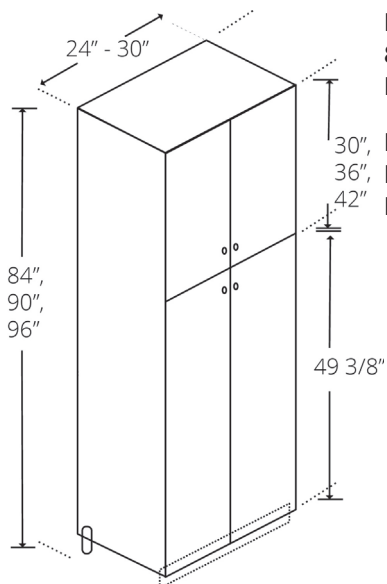




SINGLE DOOR 18" WIDE
84", 90" & 96" HIGH
PANTRY CABINET

P1884-24
P1890-24
P1896-24

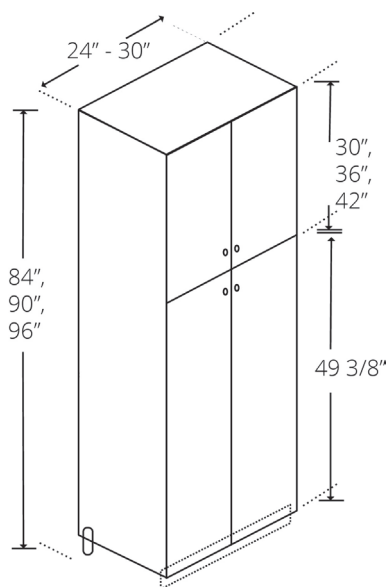
*84" & 90" includes 5 shelves
96" includes 6 shelves



DOUBLE DOOR 24" WIDE
84", 90" & 96" HIGH
PANTRY CABINET

P2484-24
P2490-24
P2496-24

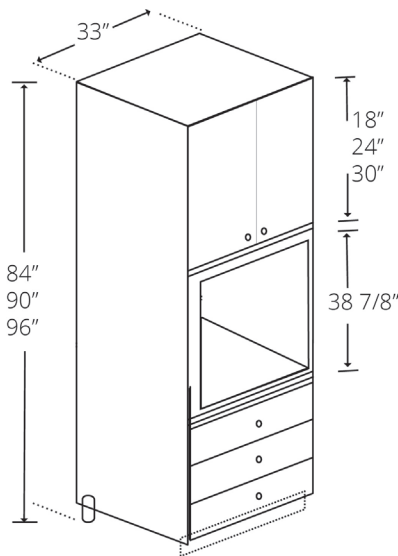
*84" & 90" includes 5 shelves
96" includes 6 shelves



DOUBLE DOOR 30" WIDE
84", 90" & 96" HIGH
PANTRY CABINET

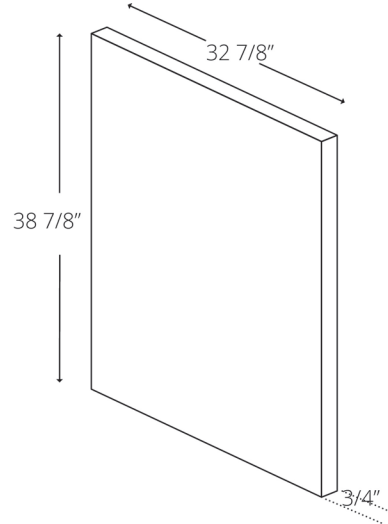
P3084-24
P3090-24
P3096-24

*84" & 90" includes 5 shelves
96" includes 6 shelves



SINGLE OVEN 33" WIDE
84", 90" & 96" HIGH
OVEN CABINET 3 DRW

OC338424-3
 OC339024-3
 OC339624-3



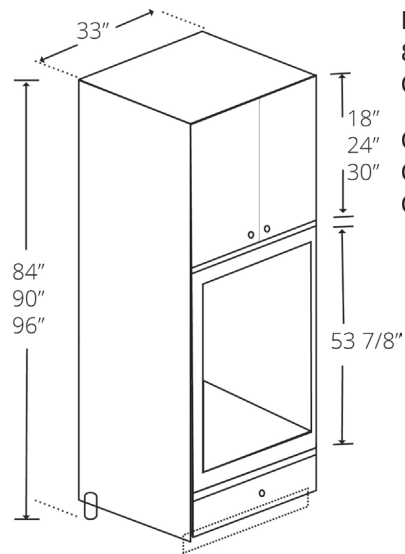
SINGLE OVEN 33" WIDE
OVERLAY PANEL

CUT OPENING ON SITE

INCLUDED WITH OVEN
 CABINET

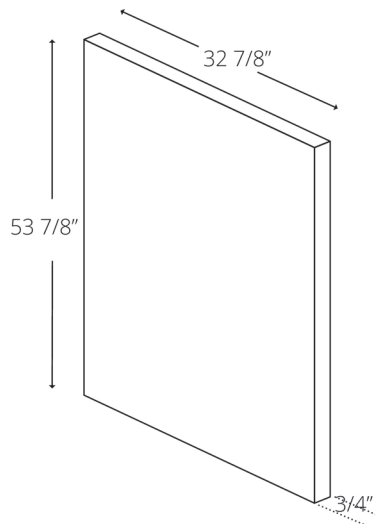
*90" & 96" include 1 shelf in
 upper

3 drawers beneath oven



DOUBLE OVEN 33" WIDE
84", 90" & 96" HIGH
OVEN CABINET 1 DRW

OC338424-1
 OC339024-1
 OC339624-1



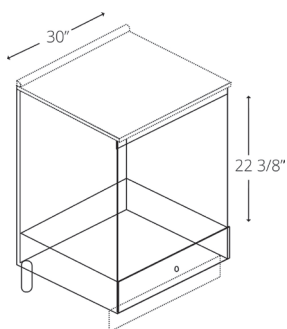
DOUBLE OVEN 33" WIDE
OVERLAY PANEL

CUT OPENING ON SITE

INCLUDED WITH OVEN
 CABINET

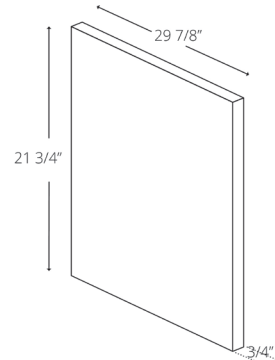
*90" & 96" include 1 shelf in
 upper

1 drawer beneath oven



BASE MICROWAVE
30" WIDE
BASE CABINET 1 DRW

BM30

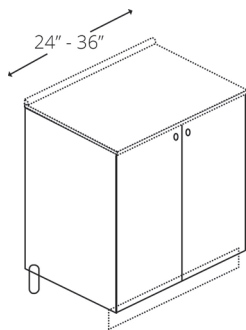


BASE MICROWAVE
30" WIDE
OVERLAY PANEL

CUT OPENING ON SITE

INCLUDED WITH OVEN
 CABINET

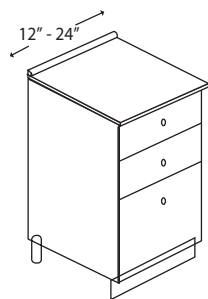
*Drawer front 7
 3/8" H



FULL HEIGHT DOOR
VANITY CABINETS
21" DEEP

V24FHD
V27FHD
V30FHD
V33FHD
V36FHD

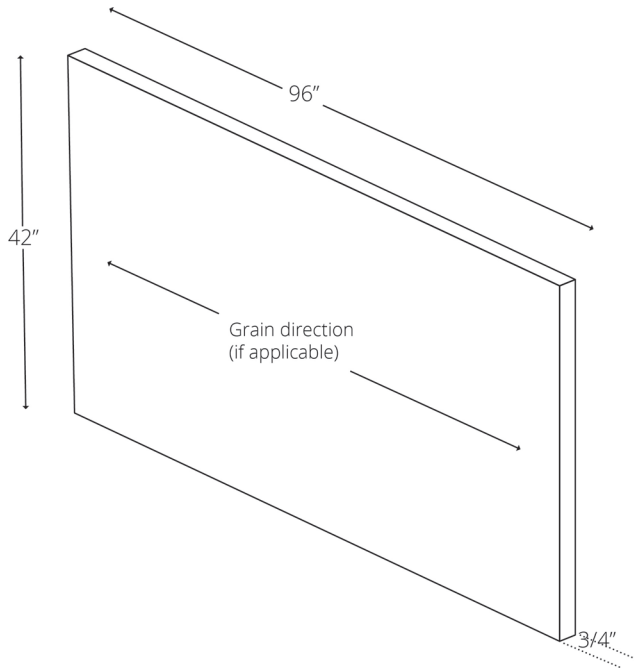
*Features water resistant,
aluminum top rail.



THREE DRAWER
VANITY CABINETS
21" DEEP

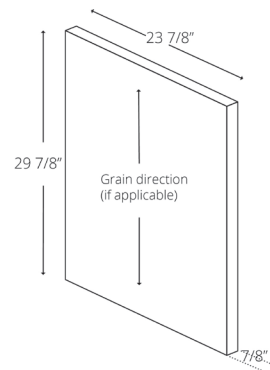
VDB12-3
VDB15-3
VDB18-3
VDB21-3
VDB24-3

*Top 2 drawer fronts 7 3/8" H
Lower drawer front 14 7/8" H



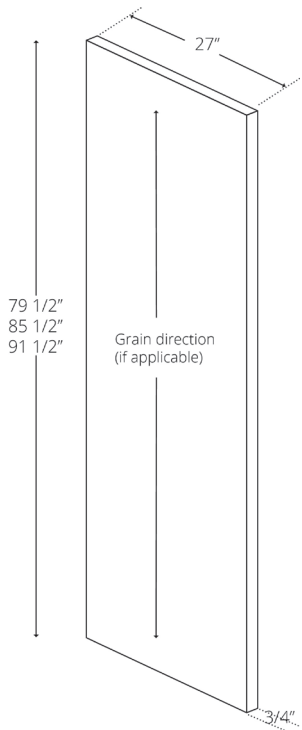
ISLAND PANEL
42" x 96"

PANEL4296



DISHWASHER
OVERLAY PANEL

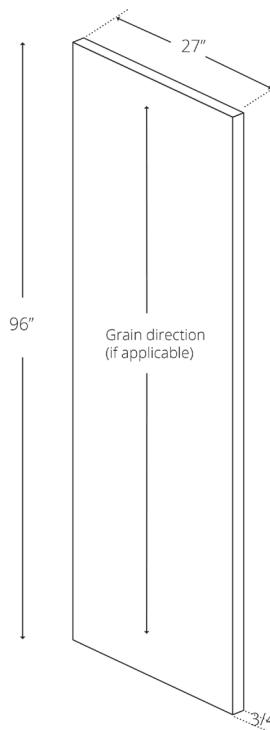
DWPANEL



TALL FINISHED
END PANELS

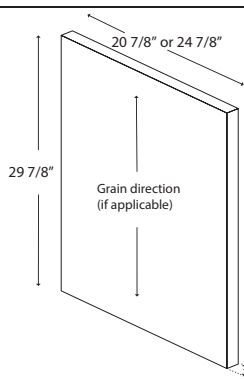
EP2784
EP2790
EP2796

*For use on exposed tall
pantry & oven cabinet ends.



REFRIGERATOR
END PANEL

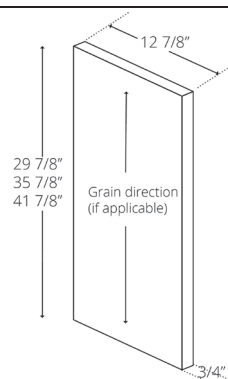
REP



BASE/VANITY FINISHED
END PANEL

EP2230
EP2530

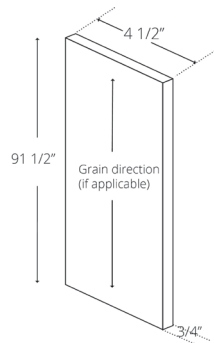
*For use on exposed base
cabinet ends.



WALL FINISHED
END PANEL

EP1330
EP1336
EP1342

*For use on exposed wall
cabinet ends.

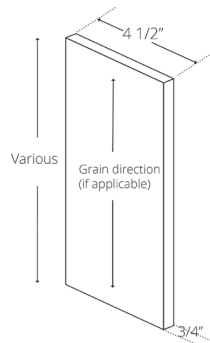


4 1/2" FILLER
3/4" x 4 1/2" x 91 1/2"

TF4.5

UNIVERSAL

*White melamine to match carcass



4 1/2" OVERLAY FILLER
TALL

OLF484

3/4" x 4 1/2" x 79 3/8"

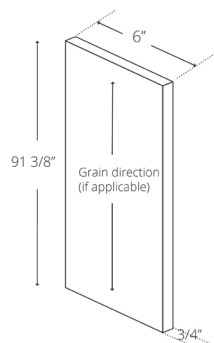
OLF490

3/4" x 4 1/2" x 85 3/8"

OLF496

3/4" x 4 1/2" x 91 3/8"

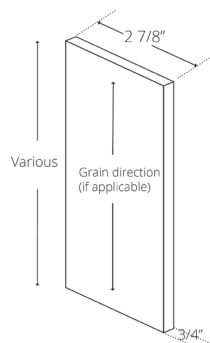
*Matches door



6" OVERLAY FILLER
3/4" x 6" x 91 3/8"

OLF696

*Matches door



2 7/8" OVERLAY FILLER
BASE & WALL

OLF330

3/4" x 2 7/8" x 29 7/8"

OLF336

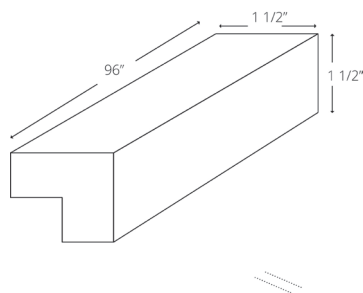
3/4" x 2 7/8" x 35 7/8"

OLF342

3/4" x 2 7/8" x 41 7/8"

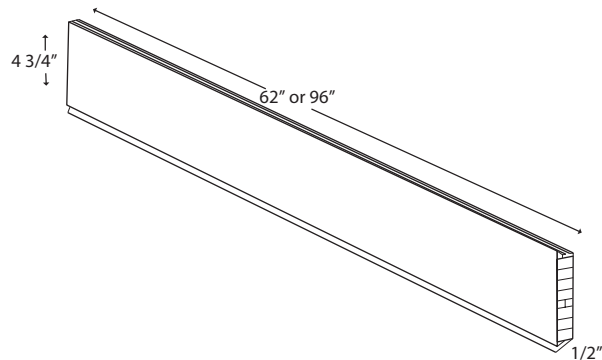
NOTE:

Back/Sub filler for overlay fillers is not included.
Recommend using TF4.5 (sold separately)



MODERN LIGHT RAIL/
TOP TRIM

LRM8



ALUMINUM TOE KICK PANEL

1/2" X 4 3/4" X 62" or

1/2" X 4 3/4" X 96"

TKS5

TKS8

*Features a brushed aluminum front plate on a plastic backing.

PLANETGRANITEDAYTONA.COM

EURO SERIES CABINET CARE

The cabinetry is designed to withstand daily use associated with normal household activities and should be treated like fine furniture. Follow these recommendations to care for your cabinetry.

CLEANING CABINET SURFACES

The cabinetry may be safely cleaned by using a moist, soft cloth (not a paper towel) and a mild, non-detergent soap (100 parts water and 1 part liquid dish soap is recommended). Dry wet surface immediately with a soft cloth. Do not use products that may contain chlorine, acetone, solvents or any other abrasive substance. Do not use abrasive soap pads or steel wool.

THERMOFOIL AND TEXTURED MELAMINE DOORS

While very durable, these products can be damaged by excessive heat. Properly installed heat shields protect cabinets adjacent to ovens, ranges, and dishwashers. It is recommended to open doors and drawers away from oven during high temperature, self-cleaning cycles. Damage caused from excessive heat is not covered under warranty.

HIGH GLOSS DOORS

PG Euro Series high gloss doors are covered with a protective film from the manufacturer. This film should be removed after cabinet installation. The surface becomes more scratch resistant over the first few days after the protective film is removed. To speed up the process, lightly polish the surface immediately with a polish such as Novus 1 Polish. Weekly polishing is recommended to keep your cabinetry looking brand new. Only use a soft cloth, such as micro-fiber and never use paper towels, brushes, scourers or scrapers.



Planet Granite Daytona
600 Ballough Road
Daytona Beach, FL 32114
386-238-5000 T
386-258-0603 F

PLANETGRANITEDAYTONA.COM

Section 4.01

Framed Series



PLANETGRANITEDAYTONA.COM

FRAMED SERIES DOOR STYLES



Desoto
Espresso

Full overlay birch door with 2-7/8" stiles and rails. The center panel is MDF.



Desoto
White

Full overlay MDF door with 2-7/8" stiles and rails. The reversed raised center panel is MDF.



Havana
Café Glazed

Full overlay birch applied moulding door with 2-1/4" stiles and rails. The raised center panel is solid wood.



Madeira
Cherry

Full overlay birch applied moulding door with 2-5/8" stiles and rails. The raised center panel is solid wood.



Pasadena
Linen Glazed

Full overlay MDF applied moulding door with 2-5/8" stiles and rails. The applied moulding is solid wood.

PLANETGRANITEDAYTONA.COM

STANDARD PRODUCT

MATERIALS AND CONSTRUCTION

Case

- Traditional face frame construction using select birch.
- Face frames are solid 3/4" thick with 1-1/2" stiles and rails. Mortise and tenon joints.
- Sides are birch veneered 1/2" plywood. The interior features a clear-coat finish.
- Shelves are 5/8" thick birch veneered plywood sealed with a clear-coat, adjustable and front edge banded.
- Backs are solid 1/2" plywood. Base cabinet backs extend to the floor, providing optimal structural stability.

Drawers

- 5/8" thick solid hard wood, dovetailed joints and clear-coated.
- Bottoms are 5/16" birch plywood fully captured.
- Slides are under mounted full-extension soft close.
- Drawer fronts are full overlay 5 piece construction.

Hinges

- Hinges are 6-way adjustable. Soft closing hinges standard on select styles.

Doors

- Mortise and Tenon full overlay.

Reveals

- Wall cabinet doors have a 1/4" reveal on the bottom and sides. The top reveal is 1" for moulding installation.
- Base cabinet doors have a 1/4" reveal. The top drawer head has a 1/4" reveal at the bottom and sides and a 1" reveal on top.

Finish

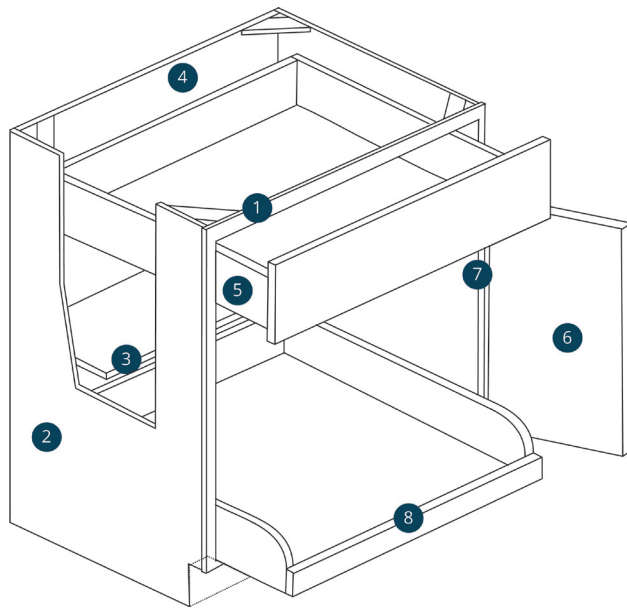
- Catalyzed conversion varnish top coat with UV protection is applied to doors, drawers and face frames.
- Glazing is applied to select doors and drawer fronts.
-

Species

- Birch

PLANETGRANITEDAYTONA.COM

PRODUCT SPECIFICATIONS/NOTES



1 Traditional face frame construction using select birch. Face frames are solid 3/4" thick with 1-1/2" stiles and rails. Mortise and tenon joints.

2 Slides are birch veneered 1/2" plywood. The interior features a clear coat finish.

3 Shelves 5/8" thick birch veneered plywood sealed with a clear-coat finish, adjustable and front edge banded.

4 Backs are solid 1/2" thick plywood. Base cabinet backs extend to the floor, providing optimal structural stability.

5 Drawers are 5/8" thick solid hard wood, dovetail joints and clear coated. Bottoms are 1/4" birch plywood fully captured. Slides are under mounted, full extension and soft closing.

6 Doors are full overlay. Butt doors on all sizes up to 39" wide.

7 Hinges are 6-way adjustable. Soft closing hinges are standard on select styles.

8 Optional roll trays (ROT) are available for certain base and pantry cabinets as an upgrade. The optional roll trays are adjustable, all wood, two point dovetail and soft closing.

DOOR REVEALS

Door reveals are 1" at the top of all cabinets and 1/4" on remaining sides. The 1" reveal at the top of wall cabinets allow for moulding application.

DOOR CLEARANCE

Door and drawer clearance must be taken into consideration during the design process to assure proper operation of all doors, drawers and roll trays.

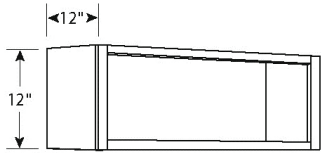
VANITY CABINETS

All vanity cabinets are 34 1/2" tall and 21" deep.

TOE KICK MATERIAL

All base, vanity and tall cabinets require toe kick material. This item (TKS8) needs to be ordered in addition to the cabinetry.

In keeping with a policy of continuous refinement, Harbor Distributors, Inc. reserves the right to alter specifications without general notice or obligation to make similar changes in previously produced product.

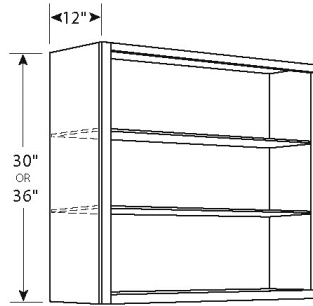


DOUBLE DOOR
12" HIGH
WALL CABINETS

W3012
W3612
W3912

W361224*

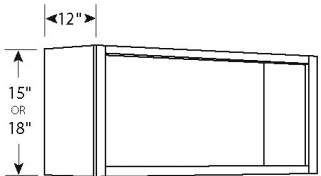
*24" deep



DOUBLE DOOR
30" & 36" HIGH
WALL CABINETS

W2430	W2436	W4236*
W2730	W2736	
W3030	W3036	
W3330	W3336	
W3630	W3636	
W4230*	W3936	

*Has center stile

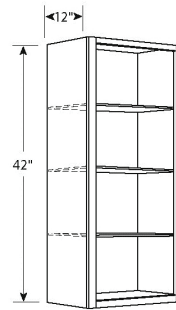


DOUBLE DOOR
15" & 18" HIGH
WALL CABINETS

W3015	W3018
W3315	W3618
W3615	

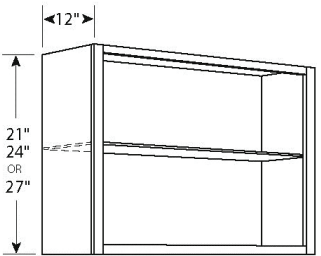
W361824*

*24" deep



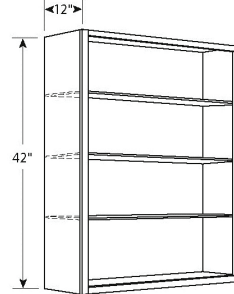
SINGLE DOOR
42" HIGH
WALL CABINETS

W0942
W1242
W1542
W1842
W2142



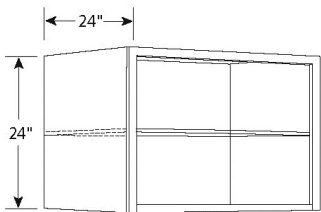
DOUBLE DOOR
21" - 27" HIGH
WALL CABINETS

W3021	W3624
W3024	
W3027	



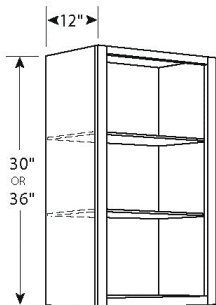
DOUBLE DOOR
42" HIGH
WALL CABINETS

W2442
W2742
W3042
W3342
W3642



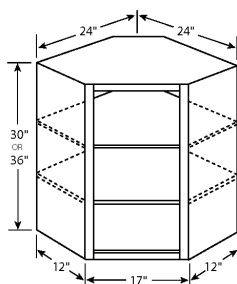
DOUBLE DOOR
24" HIGH 24" DEEP
REFRIGERATOR CABINET

W362424



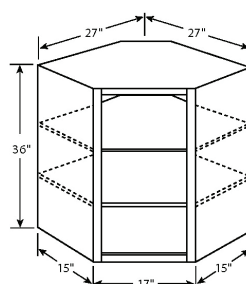
SINGLE DOOR
30" & 36" HIGH
WALL CABINETS

W0930	W0936
W1230	W1236
W1530	W1536
W1830	W1836
W2130	W2136



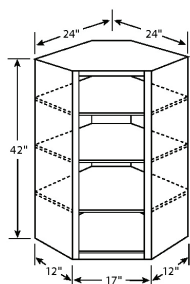
CORNER
30" & 36" HIGH
WALL CABINETS

CW2430
CW2436



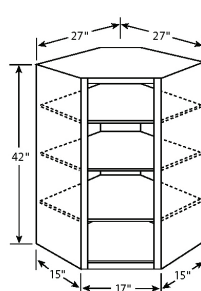
CORNER 15" DEEP
36" HIGH
WALL CABINETS

CW2736



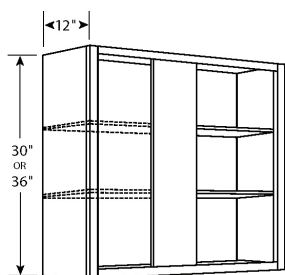
CORNER
42" HIGH
WALL CABINETS

CW2442



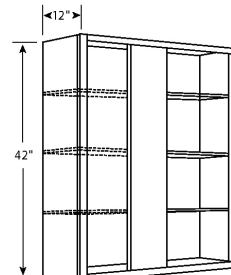
CORNER 15" DEEP
42" HIGH
WALL CABINETS

CW2742



SINGLE DOOR
30" & 36" HIGH
BLIND WALL CABINETS

BLINDW3030 BLINDW2436
BLINDW3630 BLINDW3036
BLINDW3636

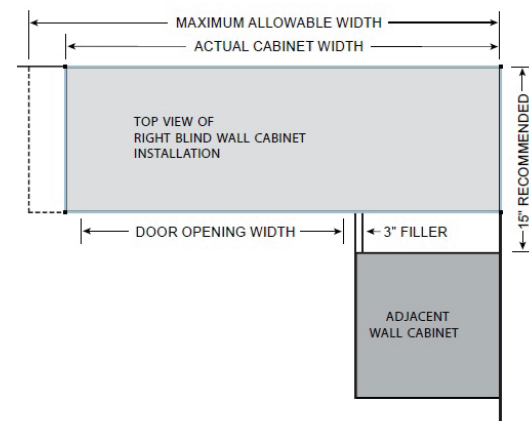


SINGLE DOOR
42" HIGH
BLIND WALL CABINETS

BLINDW2442
BLINDW3042
BLINDW3642

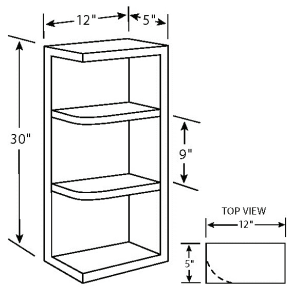
BLIND WALL CABINET INSTALLATION RECOMMENDATIONS

SKU	ACTUAL CABINET WIDTH	MIN/MAX RECOMMENDED DIMENSIONS FOR INSTALLATION	WIDTH OF DOOR OPENING
BLINDW24XX	24"	24" - 26-1/2"	9"
BLINDW30XX	30"	30" - 32 1/2"	15"
BLINDW36XX	36"	36" - 38 1/2"	20 3/4"



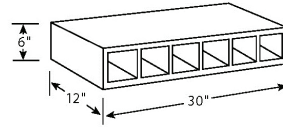
*NOTE: MEASUREMENTS BASED ON DESIGN USING A 4 1/2" VERTICAL IN FACE FRAME.

ORDER FILLER SEPARATELY.



12" DEEP
30" HIGH
1/4 ROUND SHELVES

WQR630

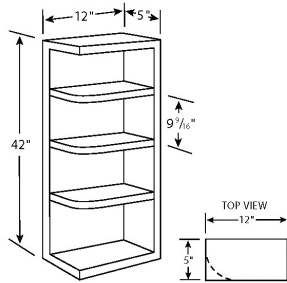


12" DEEP
WINE CUBBIES

WCU30

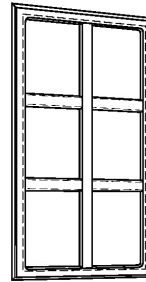
*NOTE: Can be installed vertically or horizontally.

Made of 3/4" veneer plywood with interiors finished to match & front edge banded.



12" DEEP
42" HIGH
1/4 ROUND SHELVES

WQR642

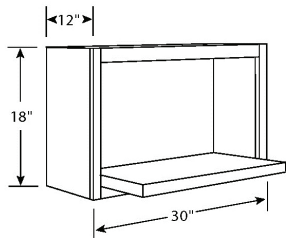


MULLION DOORS

MDXXXX

*NOTE: Available in select door styles.

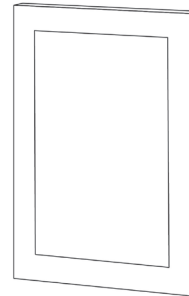
Glass not supplied.



12" DEEP
18" HIGH
MICROWAVE CABINET

MWS301812

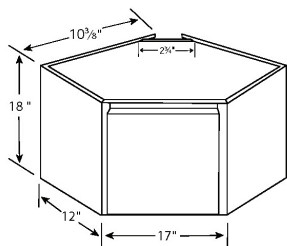
NOTE: Shelf is 17" deep.



GLASS DOORS

GDXXXX

*NOTE: Available in select door styles.

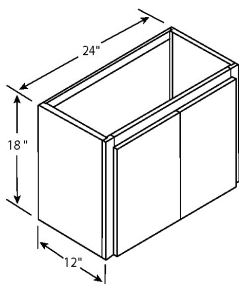


DIAGONAL
APPLIANCE GARAGE

ADAG

NOTE: Single door hinged to side stile.

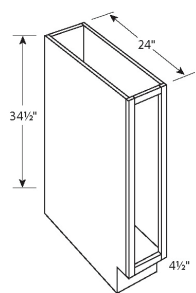
NOTE: No bottom panel, no under rail.



DOUBLE DOOR
APPLIANCE GARAGE

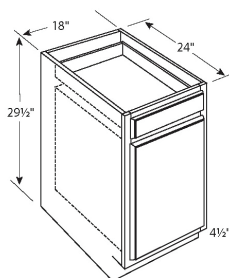
AGD2418

NOTE: Full frame cabinet, can be used as W2418.



**SINGLE
FULL HEIGHT DOOR
BASE CABINETS**

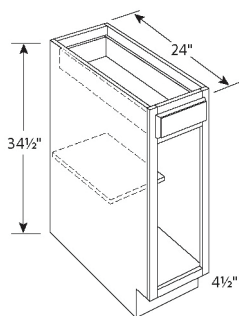
B09FHD (no shelf)



FILE DRAWER

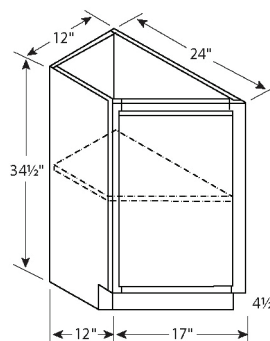
DDB18

Top drawer 6-3/4" high
Bottom drawer 16-1/2" high



**SINGLE
DOOR & DRAWER
BASE CABINETS**

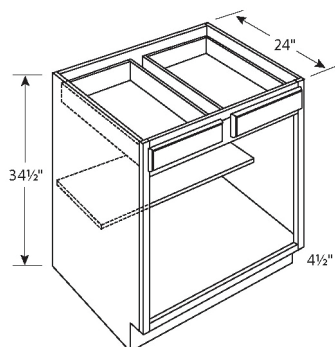
B12
B15
B18
B21



**SINGLE ANGLED
FULL HEIGHT DOOR
BASE CABINETS**

TAB12FHDL
TAB12FHDR

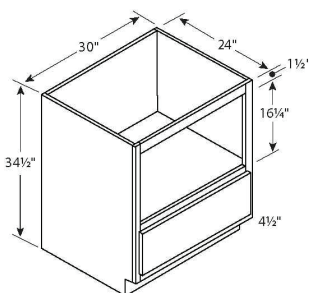
*Left shown



**DOUBLE
DOOR & DRAWER
BASE CABINETS**

B24** B36
B27** B39
B30 B42*
B33

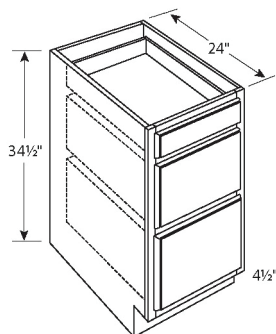
*Has center stile
**Single drawer head



**MICROWAVE
BASE CABINET**

BM30

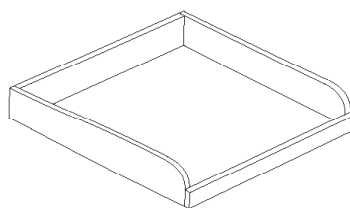
27" Wide opening
Drawer head height 11"



**THREE DRAWER
BASE CABINETS**

DB12 DB30
DB15 DB36
DB18
DB21
DB24

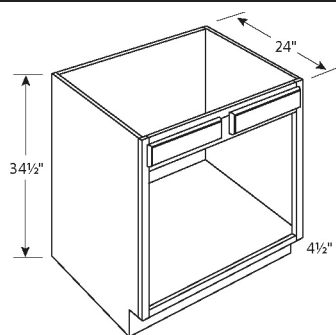
*Top drawer height 6-1/2"
Bottom drawers height 10-1/2"



ROLL OUT TRAY

ROT15 ROT30
ROT18 ROT33
ROT21 ROT36
ROT24
ROT27

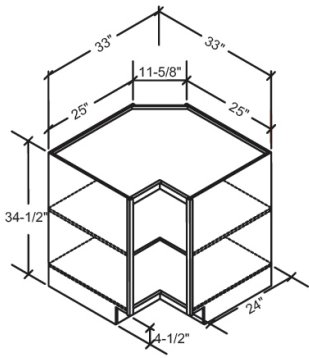
*All wood dovetail drawers
with radiused front edge. Soft
closing glides.



**DOUBLE DOOR
SINK BASE CABINETS**

SB30
SB33
SB36
SB42*

*Has center stile

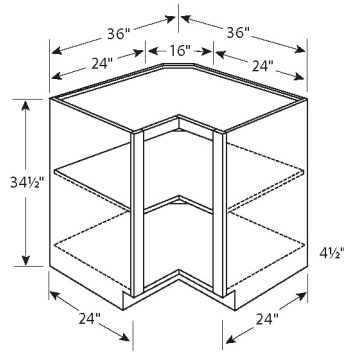


EASY RACH CORNER BASE CABINET 33"

ER33

NOTE: Double hinged doors.
NOTE: Order lazy susan kit
separately.

*Shelf is non adjustable and required.
Only use shelf mounted lazy susan trays

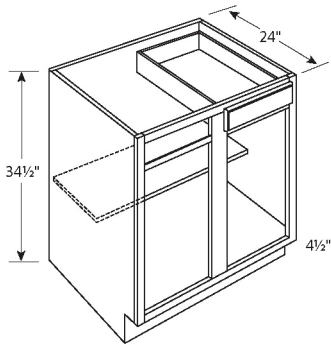


EASY REACH CORNER BASE CABINET 36"

ER36

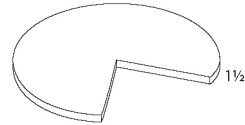
NOTE: Double hinged doors.
NOTE: Order lazy susan kit
separately.

*Shelf is non adjustable and required. Only
use shelf mounted lazy susan trays



SINGLE DOOR & DRAWER BLIND BASE CABINETS

BLINDB36FHD
BLINDB42
BLINDB48



WOOD LAZY SUSAN KIT

LSK

2/PKG.

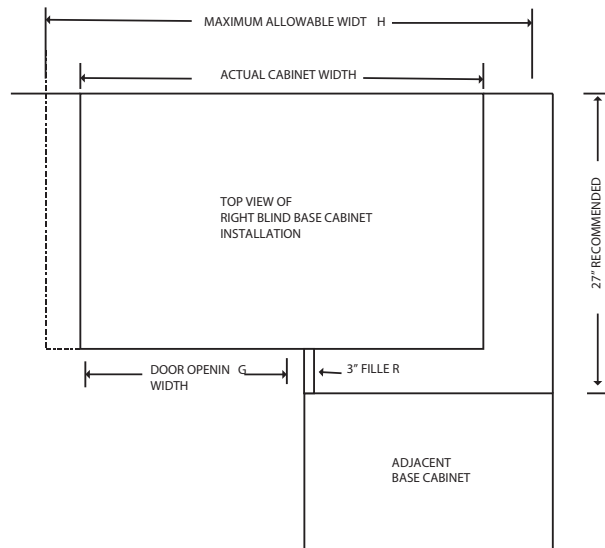
NOTE: Must be installed during
the assembly of the ER

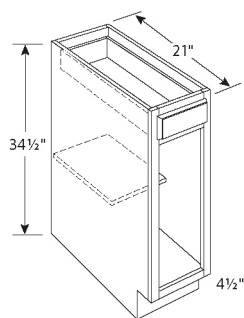
BLIND BASE CABINET INSTALLATION RECOMMENDATIONS

SKU	ACTUAL CABINET WIDTH	MIN/MAX RECOM - MENDED DIMEN - SIONS FOR INSTAL - LATION	WIDTH OF DOOR OPENING
BLINDB36FHD	30"	39" - 43"	9"
BLINDB42	36"	42" - 46"	12"
BLINDB48	48"	48" - 52"	18"

*NOTE: MINIMUM PULL RECOMMENDATION INCLUDES 3" STILE REVEAL TO CORNER.
CENTER STILE IS 9"

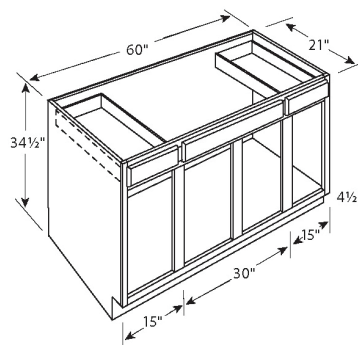
ORDER FILLER SEPARATELY.





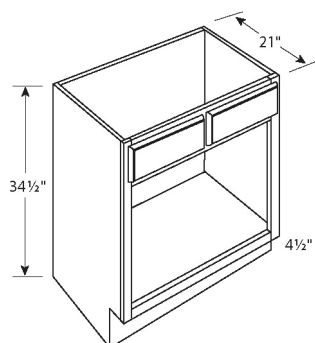
21" DEEP
1 DOOR & DRAWER
VANITY BASE CABINETS

VB12
VB15
VB18



21" DEEP
2 DRAWER & 4 DOOR
SINK BASE CABINET

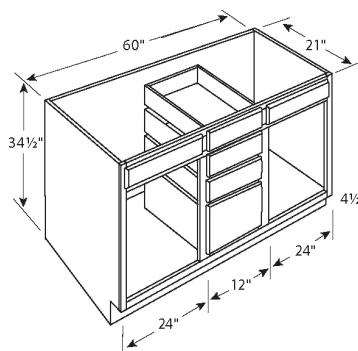
VSB60



21" DEEP
2 DOOR
VANITY SINK CABINETS

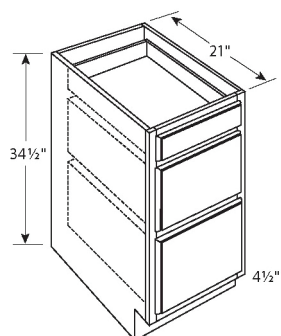
V24** V33
V27** V36
V30 V42*

*Has center stile
**Single false drawer head



21" DEEP
4 DRAWER & 2 DOOR
DOUBLE SINK CABINET

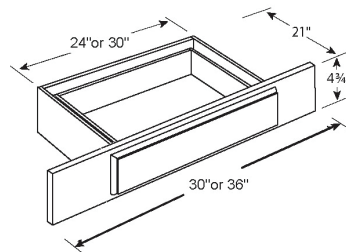
VDB60



21" DEEP
3 DRAWER
VANITY BASE CABINETS

VDB12
VDB15
VDB18
VDB21
VDB24

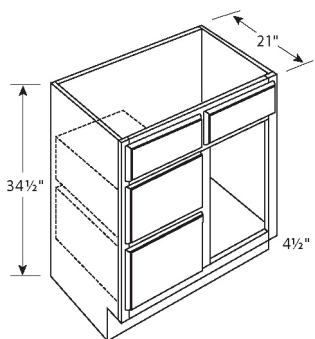
*Top drawer height 6-1/2"
Bottom drawers height 10-1/2"



VANITY
LAP DRAWER

KD30
KD36

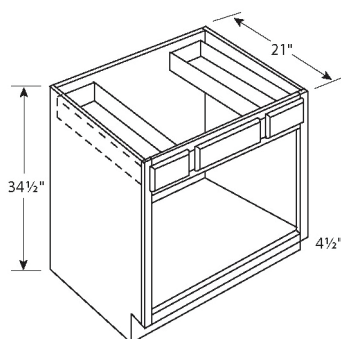
NOTE: Drawer head is slab with edge profile.
Trimable 3" stile each side of drawer (each KD trimmable up to 6").



21" DEEP
2 DRAWER & 1 DOOR
VANITY SINK CABINETS

VSDL30 VSDR30
VSDL36 VSDR36

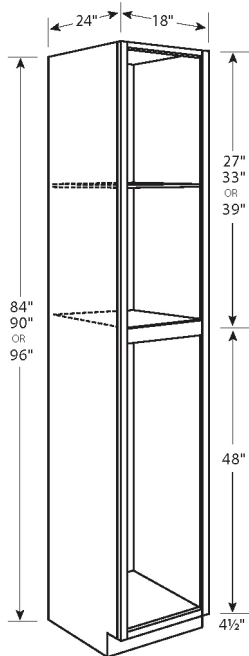
*Left shown



21" DEEP
2 DRAWER & DOOR
VANITY SINK CABINETS

VSB36
VSB42*
VSB48*

**Has center stile



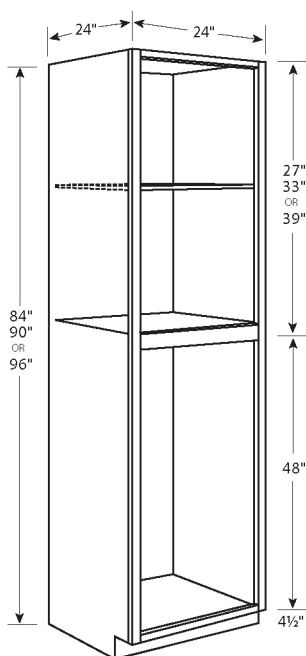
SINGLE DOOR
84" - 96" HIGH 18" WIDE
PANTRY CABINETS

P1884
P1890
P1896

Single door on top and bottom.

84" and 90" cabinets have 4 adjustable shelves and 1 fixed shelf.

96" cabinets have 5 adjustable shelves and 1 fixed shelf.



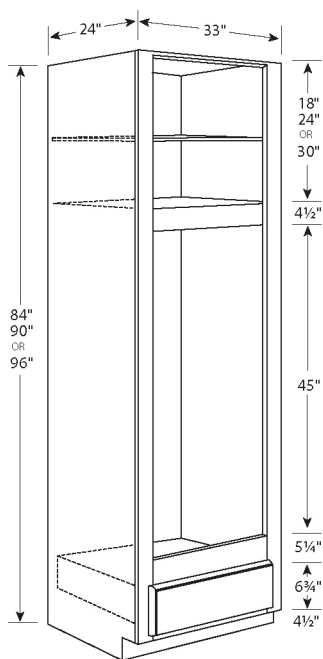
DOUBLE DOOR
84" - 96" HIGH 24" WIDE
PANTRY CABINETS

P2484
P2490
P2496

Butt doors on top and bottom.

84" and 90" cabinets have 4 adjustable shelves and 1 fixed shelf.

96" cabinets have 5 adjustable shelves and 1 fixed shelf.

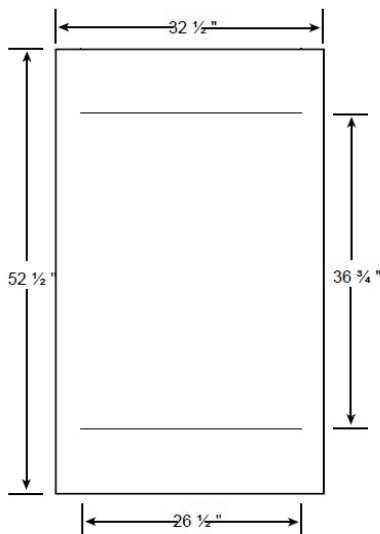


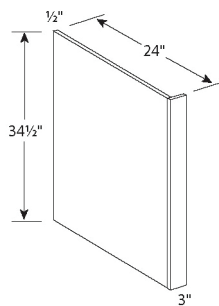
DOUBLE OVEN
SINGLE DRAWER
84" - 96" CABINETS

OC3384D
OC3390D
OC3396D

*Includes overlay panel

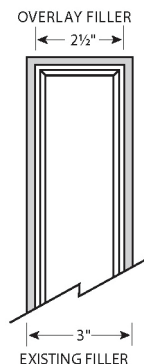
OVEN CABINET
OVERLAY PANEL





DISHWASHER
BASE END PANEL

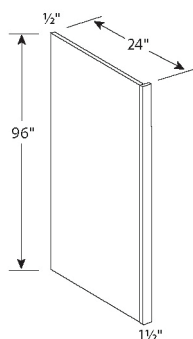
DWR3 (REVERSIBLE)



OVERLAY FILLER

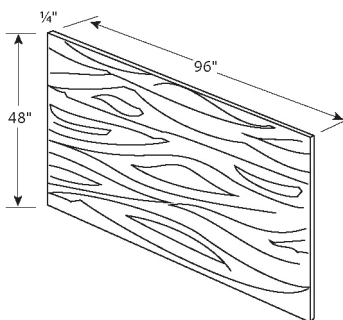
OLF3XX

*NOTE: Available in various heights. See online store for sizes. Sub filler (F396) sold separately.



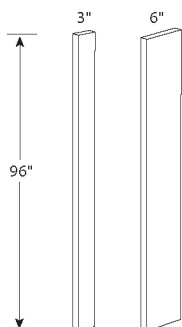
REFRIGERATOR
END PANEL

REP (REVERSIBLE)



LONG GRAIN PANEL
96" x 48" x 1/4"

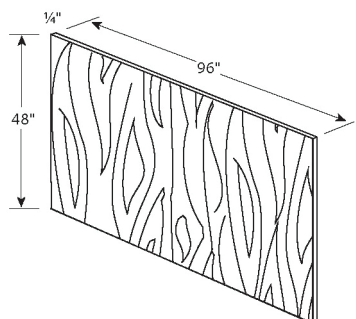
BP4896LG



3" FILLER
3/4" x 3" x 96"
F396

6" FILLER
3/4" x 6" x 96"
F696

NOTE: Fillers are universal length. Trim as needed.



SHORT GRAIN PANEL
48" x 96" x 1/4"

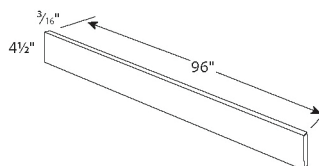
BP9648SG



FLUTED FILLER
3/4" x 3" x 96"

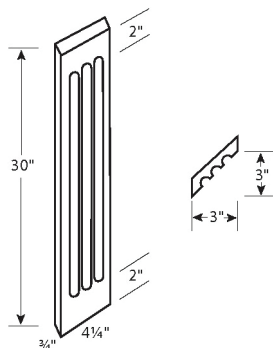
F396FLUTE

NOTE: Flutes run the length of the filler.
Available in select door styles.



TOE KICK COVER
3/16" x 4-1/2" x 96"

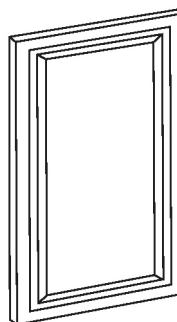
TKS8



ANGLED FLUTED FILLER
3/4" x 4-1/4" x 30"

AFF330

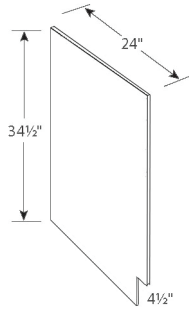
NOTE: Three flutes run the length of the filler beginning 2" in from either end.
Available in select door styles.



DECORATIVE
END PANEL DOORS

EP1230	12" x 30"
EP1236	12" x 36"
EP1242	12" x 42"
EP2430	24" x 30"

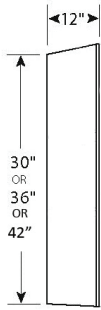
NOTE: EP's match door profile and reveals.



BASE FINISHED
SIDE PANEL
REVERSIBLE

B34.5FINSIDE

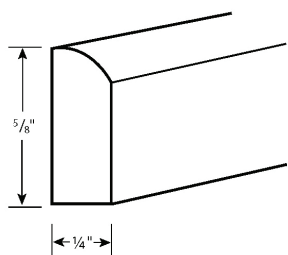
NOTE: Use on exposed ends
of door styles with unfinished
side panels.



WALL FINISHED
SIDE PANEL
REVERSIBLE

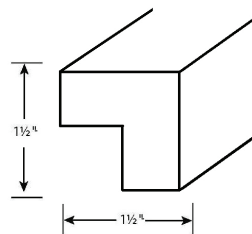
W30FINSIDE
W36FINSIDE
W42FINSIDE

NOTE: Use on exposed ends
of door styles with unfinished
side panels.



5/8" SCRIBE
MOULDING

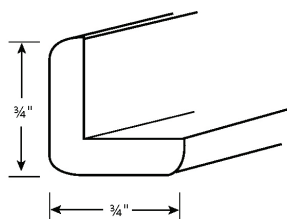
SMB



MODERN
LIGHT RAIL
MOULDING

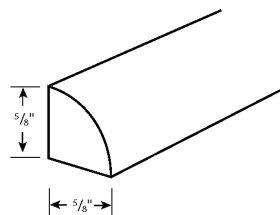
LRM8

NOTE: Available in select door styles.



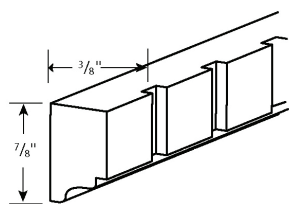
OUTSIDE CORNER
MOULDING

OCM8



SHOE
MOULDING

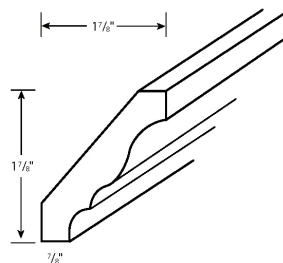
SHOE



DENTIL
MOULDING

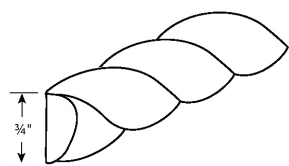
DMTIS

NOTE: Fits into the insert of RCM4S (sold separately)
Available in select door styles.



2-3/4" CROWN
MOULDING

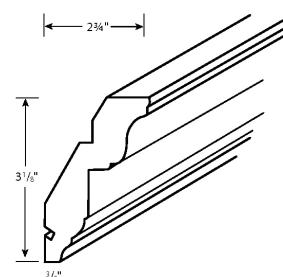
CM8



ROPE
MOULDING

RPIS

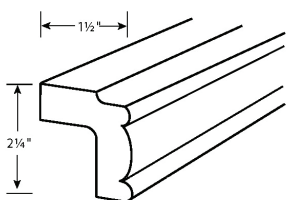
NOTE: Fits into the insert of RCM4S (sold separately)
Available in select door styles.



ROYAL CROWN
MOULDING

RCM4S

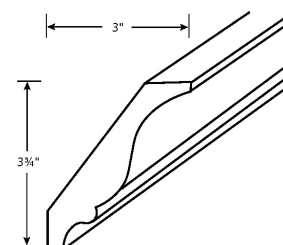
NOTE: For use with DMTIS or RPIS (sold separately).



TRADITIONAL
LIGHT RAIL
MOULDING

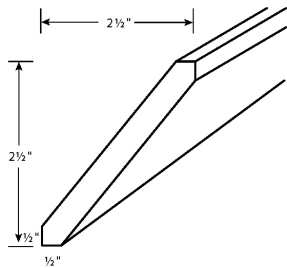
LRM8

NOTE: Available in select door styles.



LARGE CROWN
MOULDING

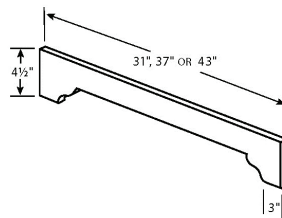
BCM8



SHAKER CROWN
MOULDING

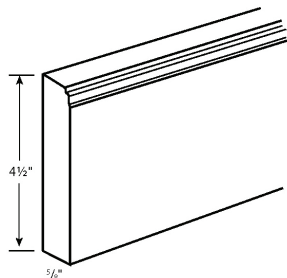
SHAKERCROWN

NOTE: Available only in Desoto
line.



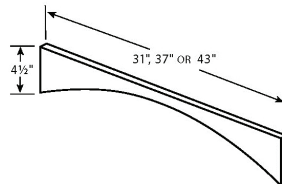
BECKONY VALANCE

V31D
V37D
V43D



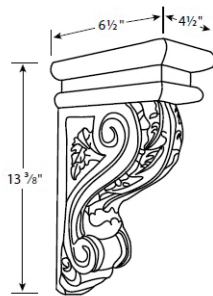
BASE
MOULDING

BASE



ARCHED VALANCE

V31E
V37E
V43E

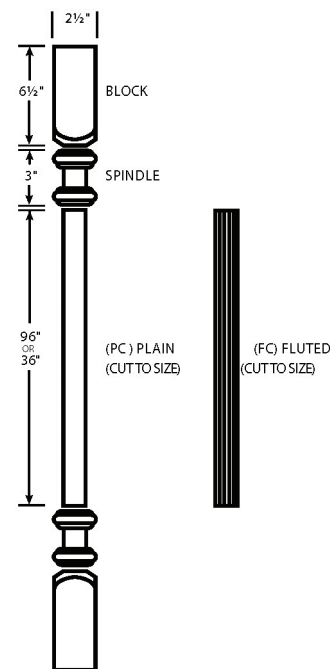


LARGE CORBEL

LCOR14

NOTE: Unglazed

COLUMN PILASTERS
INDIVIDUAL PARTS



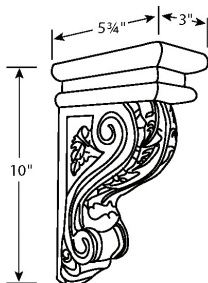
BLOCK

SPINDLE

PC96 (PLAIN)

FC96 (FLUTED)

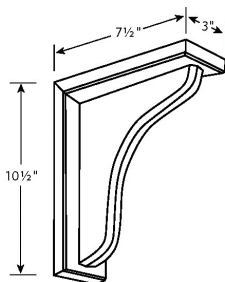
NOTE: Pilasters are round and
must be cut for applique ap-
plications. Diameter of pilaster
is 1-1/2". Block, spindle and
columns are not glazed.



MEDIUM CORBEL

MCOR10

NOTE: Unglazed



PLAIN CORBEL

PLCOR10.5

NOTE: Unglazed.

PLANETGRANITEDAYTONA.COM

FRAMED SERIES CABINET CARE

The cabinetry is designed to withstand daily use associated with normal household activities and should be treated like fine furniture. Follow these recommendations to care for your cabinetry.

CLEANING CABINET SURFACES

The cabinetry may be safely cleaned by using a moist, soft cloth (not a paper towel) and a mild, non-detergent soap (100 parts water and 1 part liquid dish soap is recommended). Dry wet surface immediately with a soft cloth. Do not use products that may contain chlorine, acetone, solvents or any other abrasive substance. Do not use abrasive soap pads or steel wool.

EXCESS MOISTURE CONTROL

Excess moisture is one of the worst enemies of the finish on wood products. Sink, range, oven, dishwasher and baseboard areas are the most susceptible to this. It is important to promptly remove water spills and excess moisture from cabinets, using a clean soft cloth.

MINOR SCATCH AND NICK REPAIRS

Minor scratches and nicks in the finish as a result of normal wear and tear can often be repaired. Touch up kits are available through our Authorized Dealers.

WARRANTY

10 YEAR LIMITED

All HDI Euro and Framed series products are guaranteed to the original purchaser for 10 years from the date of purchase or delivery, as proven by the invoice received from Harbor Distributors, Inc. Any notice or request for action under the guarantee must be made in writing to the authorized dealer, with whom Harbor Distributors, Inc. will agree on the intervention(s) to be made. Any interventions will be carried out by the authorized dealer. All components not supplied by Harbor Distributors, Inc. are excluded from the present guarantee. The present guarantee covers the repair or replacement of any parts that are found to be defective through the manufacturer's fault.

Excluded from the warranty are any parts that are damaged through negligence in use, incorrect assembly or installation, incorrect maintenance, or through normal wear and tear. The warranty shall not apply to any cabinetry or parts that have been subjected to alteration, modification, accident, damage in transit, abnormal use, extreme temperature, moisture levels, or abrasive cleaning chemicals. Any differences in the tones of colors and woods which may occur because of the natural variability in the raw materials or because of deliveries carried out at different times, are not considered manufacturing defects and are therefore not covered by the guarantee.

In no event is Harbor Distributors, Inc. liable for incidental, indirect, or consequential damages resulting from the use of its cabinets. This warranty does not cover the cost of assembly, installation, removal, subsequent damage, or transportation of the defective product regardless of whether the work was performed by a contractor, service company, or consumer.

Harbor Distributors, Inc. may elect to repair or replace the product with a product of equal value and complementary style if the original style is no longer available at the time of the claim. Harbor Distributors, Inc. cannot guarantee an exact match between the finish of existing product and its replacement due to the natural aging of wood.

WARPED DOORS

Doors that are warped ¼" or less must be allowed to hang through (2) seasons before replacement will be made. Typically, the door will return to its normal flat position after conditioning to its environment.

WOOD DOORS

Wood is a natural material and as such, is affected by environmental factors that may slightly change its appearance. As the wood ages, darkening or mellowing of the wood can be expected. Wood exhibits distinct patterns and characteristics, which contribute to its natural beauty. Variations in color and appearance of the wood due to natural characteristics are not considered defects and are not covered by this warranty. Natural aging and darkening of wood color, as well as inherent growth characteristics of the wood are not covered by this warranty.

Continued on next page

WARRANTY (CONTINUED)

GLAZE AWARENESS

Glazing is a hand-applied technique. Slight tonal variations and varied brush strokes should be expected. This is the artistic characteristic of hand brushed glazes.

PAINTED FINISH DISCLAIMER

Painted cabinetry is a very desirable finish in the cabinet industry. Harbor Distributors, Inc. offers a high quality painted finish on select cabinetry. We take extra care and precaution in the packaging and shipping and handling of the finished product.

Painted finishes have a number of inherent characteristics that can present unique challenges. Because a painted finish is so smooth, imperfections are magnified. The smallest imperfection will stand out on a painted finish that would normally go unnoticed on a stained finish.

Because of these inherent characteristics, Harbor Distributors, Inc. does not guarantee their painted finishes against minor cracking, chipping or peeling, unless it is a manufacturer's defect.

NOTE ON THERMOFOIL AND TEXTURED MELAMINE DOORS

This warranty does not apply to any thermofoil or textured melamine products installed, without the use of properly-installed heat shields, adjacent to appliances, such as ovens, ranges or dishwashers, or fixtures, such as lighting, that generate high temperatures.

SOFT CLOSING HINGE MECHANISM

There is no warranty for the soft closing hinge mechanism. Replacement hinges can be purchased from Harbor Distributors. Contact customer service for details.

In the event that you need to file a warranty claim with us, please do so by following the policies outlined on the Damage/Warranty Replacement Program page.

DAMAGE/WARRANTY REPLACEMENT PROGRAM

In the event that you have a damaged or warranty item, we will take the most expeditious measures to replace the damaged or warranty parts.

NOTE: Please check the cabinet parts before assembly, as we will not replace the cabinet/part if the cabinet is assembled.

To replace a warranty cabinet part:

1. Take clear and descriptive pictures of the damage/warranty part and DO NOT assemble cabinet before submitting your claim.
2. Fill out and submit our Warranty Claims form, found on the HDI Online Store, www.shop.harbordistributors.com (scroll to the bottom of the page to the footer, under 'Customer Support').
 - a. You have the option to upload your pictures directly to this form, or you can email them to warranty@harbordistributors.com
3. Do not use, destroy or discard the item unless told otherwise by a staff member of Harbor Distributors.

IMPORTANT: If shipping damage occurs, note any and all damages or potential damages on the delivery receipt before you sign for the shipment.

- a. Failure to do this step results in a rejected claim.



Planet Granite Daytona
600 Ballough Road
Daytona Beach, FL 32114
386-238-5000 T
386-258-0603 F

Section 7.01 Miscellaneous



RETURN POLICY

For all returns, including warranty replacement items, please submit our Warranty/Returns form found in the 'Customer Support' section of the HDI Online Store.

Warranty Items Return/Replacement Guidelines:

Harbor Distributors, Inc. will accept returns for warranty items under the following circumstances:

- The cabinet must not be assembled (unless warranty is for a failure such as a hinge or glide).
- The Warranty/Returns Form must be filled out and pictures of the claim must be submitted to us either through the online form or emailed to customerservice@harbordistributors.com.
- If the item was damaged during shipping, do not use, destroy or discard the damaged or defective item, as it is the property of the freight carrier. It is required that the item be available for the shipping company to retrieve.
- If no photos are supplied, or the item is not made available to pick up, you will be charged for the replacement.

Non-Warranty Item Returns for Credit:

Harbor Distributors, Inc. will accept returns for non warranty items and issue credit on customer's account under the following circumstances:

- Item to be returned is unopened and in brand new condition.
- Item was purchased within last 30 days.
- Customer must pay a restocking fee of 20% of the original purchasing cost of the item.

Non-Returnable Items:

Harbor Distributors, Inc. will not accept returns for non warranty items under the following circumstances:

- Any special order item that is not stocked at our facility.
- Any item that has been opened and repackaged in a way that is not suitable for resale (i.e. taped with blue tape, duct tape, etc. or missing internal protective foam, corner blocks, tie downs, etc.).
- Any item that has been damaged from improper handling.
- Any item that has been assembled.

*Harbor Distributors, Inc. reserves the right to inspect any item brought back for return. It is at the discretion of Harbor Distributors, Inc. to accept/refuse any item brought back for return. If a returned item is accepted by Harbor Distributors, Inc., and credit is owed to customer, a credit will be issued on the customer's account for the amount of the original sale of said item (less fees).

Recommended Resources

FINISH MATERIALS

Please purchase your extra stain supplies directly from Mohawk Finishing Products. This assures fresh product and simplifies the shipping. You can purchase Touch Up Kits directly from Harbor Distributors.

Mohawk Finishing Products
P.O. Box 22000
Hickory, NC 286030220

www.mohawk-finishing.com

1-828-261-0325
(ask to be transferred to Norm Wilson's cell phone)

ASSEMBLY BLOCKS

This is our resource for bulk assembly blocks. Should you like to purchase assembly blocks in bulk please contact:

Hughes Supply

1-336-475-8146

Part # H0432, color 2308 (8,000 pieces per box)

ASSEMBLY TOOLS

We use a brad nail gun (optional) and a staple gun to assemble our cabinetry. We use the brad nailer in lieu of using the peach assembly blocks included in the cabinetry. Below, is the equipment we use:

Nail Gun: Senco SLP20XP Brad Nailer. We use 3/4" brad nails to attach the face frame to the side panels.
Staple Gun: Senco 6S0031N XtremePro , model # SFT10XP-E. We use 1/2" staples.

FINISHED SIDE PANEL APPLICATION

We use 3M Hi-Strength 90 Spray Adhesive to apply our finished side panels. Installation is easy. Spray adhesive on both surfaces, allow time for adhesive to set up, and then apply the finished side panel.

3M Hi-Strength 90 Adhesive can be found online or at local hardware stores.

DEALER NOTES

[illegible]



Planet Granite Daytona
600 Ballough Road
Daytona Beach, FL 32114
386-238-5000 T
386-258-0603 F

NOTICE: **Planet Granite**. reserves the right to make specification changes for continued product improvement.
NOTICE: Due to printing limitations, color pictures cannot be guaranteed to exactly match the actual cabinet material.