



Full Catalog | *Euro & Framed Series Cabinetry*  
[www.harbordistributors.com](http://www.harbordistributors.com)

## TABLE OF CONTENTS

**\*\*Click category headings to go to that section. Click our logo to go back to contents.\*\***

### 1. Quick Reference

- Reference and tips from HDI .....1.02-1.03

### 2. Kitchen at a Time Program

- Ordering Process.....2.02
- Order Lead Times.....2.03
- Order Pick-Up Procedures.....2.04
- Shipping Program.....2.05-2.06
- Display Program .....2.07

### 3. HDI Euro Series

- In Stock Door Styles.....3.02
- Standard Product.....3.03-3.04
- Product Specifications.....3.05-3.14
- Cabinet Care.....3.15

### 4. HDI Framed Series

- In Stock Door Styles.....4.02
- Standard Product.....4.03
- Product Specifications.....4.04-4.15
- Cabinet Care.....4.16

### 5. Other Products Offered

- Other Brands Available.....5.02

### 6. Warranty Program

- Warranty.....6.02
- Glaze Awareness/Painted Disclaimer/Thermofoil Doors.....6.03
- Warranty Replacement Program.....6.04

### 7. Miscellaneous

- Return Policy.....7.02
- Recommended Resources.....7.03
- Quote Forms/List Pricing.....7.04-7.10
- Dealer Notes.....7.11-7.12



[www.harbordistributors.com](http://www.harbordistributors.com)

## Section 1.01

# Quick Reference





## QUICK REFERENCE GUIDE / USEFUL TIPS

- **What is the best way to contact Harbor Distributors?**
  - You can call us at the number in the header of this page, email Customer Service, use the 'Contact Us' link on our website, or contact your sales rep directly.
- **What are Harbor Distributors' business hours?**
  - Our normal business hours are as follows:
  - Office Hours: Mon - Fr: 8:00 am - 4:30 pm
  - Warehouse Hours: Mon - Fri: 8:00 am - 4:00 pm
  - Closed on Saturdays and Sundays
  - You will be notified via email or you can check our website for special holiday hours.
- **How can I submit an order?**
  - All orders should be submitted through our website via the HDI Online Store, which is linked in the menu on our main website.
- **Where can I find Harbor Distributors' website?**
  - [www.harbordistributors.com](http://www.harbordistributors.com)
- **How can I log into the HDI Online Store?**
  - Visit the HDI Online Store and click the 'Login' link in the upper right of the page.
  - Enter the registered username and password for your account.
- **Ok, I'm logged in, why should I use the HDI Online Store?**
  - Our online store makes ordering from us easy. Your pricing is built into your account so you never have to worry about remembering your multipliers again.
  - Our online store is synced with our inventory so you know ahead of time if your order is in stock.
  - You can save multiple quotes and name them whatever you like. You don't have to submit them to us until you are ready.
  - Our spec book is built into our online store so you will always have pictures and specs available as you are ordering.
  - Submitting orders through our website guarantees the fastest possible turnaround time for order processing.



## QUICK REFERENCE (cont.)

- What if I don't have access to a computer and I need to place a quick order or look up a price?
  - Our online store works just as well on a smartphone, iPad or tablet as it does on a standard computer. No matter where you are, as long as you have an internet connection, you can use our store.
- How will my orders be delivered?
  - All orders will be palletized and shipped via a third party LTL carrier to your shop or showroom (most small orders under 60 lbs. may be able to ship via UPS).
  - The trucking companies usually deliver between normal business hours.
  - You can optionally request a delivery notification or an appointment, but this request could be a small additional fee.
- How can I stay up to date with Harbor Distributors?
  - We encourage all of our dealers to sign up for our emails. There is a link to do this on our website (click 'Contact Us' and then the green button that says 'Stay Connected').
  - If you don't want to receive our emails, you can check our online store for any recent updates. There is a green floating icon on the right of the page that can take you to our recent updates in web format.
- Ok, I have to file a warranty claim, where can I do that?
  - You can submit warranty claims directly through our online store. Look for the link at the bottom of the page that says, 'Warranty>Returns'
  - See the warranty section of our catalog for more information.



[www.harbordistributors.com](http://www.harbordistributors.com)

Section 2.01

# Kitchen at a Time (KAT) Program



## KITCHEN AT A TIME (KAT) PROGRAM DETAILS

- If you wish to be a dealer for Harbor Distributors, the first step is to fill out our online Account Registration forms. These can be found on our website at [www.harbordistributors.com](http://www.harbordistributors.com).

## ORDERING PROCESS

### Submitting and Processing Orders with HDI

- Please use the HDI Online Store to place orders with us:
  - You can find this online at the following address: [www.shop.harbordistributors.com](http://www.shop.harbordistributors.com)
  - Once your account is activated, you will see pricing, be able to save quotes and submit orders.
  - Our online system is synced with our inventory so you will always know what is in stock.
- When an order is received by HDI, it is processed. Once we receive payment of submitted order, we will ship the order to you within a few business days.
- We accept cash, check, money orders, Visa, MasterCard and Discover. We do not accept American Express.
- Orders are shipped palletized. Be sure to have the proper equipment necessary for receiving.
- Our shipping program is outlined in the following few pages.



2020 and ProKitchens catalogs for our cabinetry lines are available to authorized dealers.

If you have any questions, please do not hesitate to call your sales rep or our Customer Service Department.



## ORDER LEAD TIMES

Immediate order fulfillment cannot be guaranteed for walk in customers. We strongly encourage all customers to be aware of the order lead times outlined below.

### Flat-Pack (unassembled) HDI Euro Series Orders

- **WITHIN 5 BUSINESS DAYS:** Flat-Pack orders for HDI Euro Series will be ready for pick up or to be shipped within 5 business days from order confirmation
- **FOR LOCAL PICK UP:** If a confirmed pick-up order is ready before the fifth business day, we will contact you to let you know the order is available for pick up.

### Flat-Pack (unassembled) HDI Framed Series Orders

- **WITHIN 4 BUSINESS HOURS:** Flat-Pack orders for HDI Framed Series will be ready for pick up or to be shipped within 4 business hours from order confirmation
  - Orders to be shipped must be confirmed before 12:00 pm to be shipped the same business day.
- **FOR LOCAL PICK UP:** If a confirmed pick-up order is ready before the 4 hour mark, we will contact you to let you know the order is available for pick up.

### Assembled Orders (HDI Euro and Framed Series)

- **WITHIN 10 BUSINESS DAYS:** Assembled orders will be ready for pick up or to be shipped within 10 business days from confirmation. We do not expect the majority of orders to take the full 10 business days, however, it is important to keep this lead time in mind when placing assembled orders.
- **FOR LOCAL PICK UP:** We will contact you to let you know when the order is fully assembled and available for pick up.

### Expediting Order Fee (HDI Euro and Framed Series)

- **20%:** If you would like to rush your order with us, please note, that you will be charged a 20% order expediting fee. This fee is 20% of materials cost and will move your order to the next in line, but behind any already confirmed expedited orders.

### Storage Fees for Late Pick-Ups

- If your order is not picked up from us within 3 business days after the order is complete, the order will be subject to a \$25 per day storage fee that will take effect after the third business day.
- If you wish to confirm an order to hold inventory, but not pick up the order within our standard lead times, please call us to arrange a pick-up appointment.

## SHIPPING PROGRAM

Shipping costs are based on the total weight of your order.

The HDI Online Store automatically calculates the weight of your order and prices the shipping for you.

A freight cost grid is included in this catalog to show you our shipping rates. These rates are built into our online store.

- These shipping rates are for business to business, dock to commercial dock delivery. These prices are tailored to your shipping address only.
- Applicable fuel surcharges may apply.
- Delivery time frame and progress tracking will be available to you through the freight carrier's web site via the tracking number you are emailed upon order shipment.

Any delivery outside the parameters noted above may incur additional charges. These accessorial charges, such as lift gate and home delivery, can be found on the carrier's web site. Or, feel free to call our Customer Service Team.

Small items may be shipped via a small package carrier such as UPS. A damage disclaimer may need to be signed. Please check with Customer Service.

## STANDARD SHIPPING RATES

### FLORIDA SHIPPING RATES (shipping within the state of Florida)

WEIGHT	COST*	NOTES
0-500 lbs	\$100	
501-1000 lbs	\$160	
1001-1500 lbs	\$230	
1501-2000 lbs	\$250	
2001-2500 lbs	\$280	
2501-3000 lbs	\$340	
Over 3000 lbs		Please call Customer Service for a quote

- These rates are for business to business, dock to commercial dock delivery, within the state of Florida.
- Applicable fuel surcharges may apply.
- Delivery time frame and progress tracking will be available to you through the carrier's website via a tracking number.
- Any delivery outside the parameters noted above will incur additional charges. These accessorial charges, such as lift gate and home delivery, can be found on the carrier's web site. Or, feel free to call our Customer Service Team.
- Small items may be shipped via small package carrier. A damage disclaimer may need to be signed. Please check with Customer Service.

\*These rates are for unassembled cabinetry coming from HDI in Pinellas Park, FL only. Assembled cabinetry ships for an additional \$7 per cabinet (plus assembly fee per cabinet).



## OUT OF STATE SHIPPING RATES

### OUT OF STATE SHIPPING RATES (shipping within the Southeastern United States)

WEIGHT	COST*	NOTES
0-500 lbs	\$160	
501-1000 lbs	\$270	
1001-1500 lbs	\$390	
1501-2000 lbs	\$440	
2001-2500 lbs	\$550	
2501-3000 lbs	\$660	
Over 3000 lbs		Please call Customer Service for a quote

- These rates are for business to business, dock to commercial dock delivery, outside the state of Florida.
- Applicable fuel surcharges may apply.
- Delivery time frame and progress tracking will be available to you through the carrier's website via a tracking number.
- Any delivery outside the parameters noted above will incur additional charges. These accessorial charges, such as lift gate and home delivery, can be found on the carrier's web site. Or, feel free to call our Customer Service Team.
- Small items may be shipped via small package carrier. A damage disclaimer may need to be signed. Please check with Customer Service.

\*These rates are for unassembled cabinetry coming from HDI in Pinellas Park, FL only. Assembled cabinetry ships for an additional \$7 per cabinet (plus assembly fee per cabinet).

\*\*We ship nationwide. Please contact us for a tailored shipping rate program if your business is outside the Southeastern United States.

## DISPLAY PROGRAM

We are pleased to offer you a 25% discount on HDI Framed displays and a 50% discount on HDI Euro displays. The following details the eligibility requirements:

- Displays are to be in a primary retail showroom space.
- Displays are to be a representation of the product as a kitchen (minimum 6 cabinets).
- To receive the discount, mark your order with 'Display Program' and fax/email us the display layout when sending in the order.
- The program does not include sales aids (brochures, catalogs, sample doors).
- Standard freight charges apply.

## AVAILABLE SALES AIDS

We are proud to offer various sales aids for purchase:

- Full Sample Starter Pack (best deal)
  - Includes all door style samples, 1 pack of booklet brochures, 1 pack of Euro Series tri-fold brochures, 1 pack of Framed Series tri-fold brochures, 1 printed catalog, 1 set of hardware boards and a branded carrying case.
- Euro Sample Pack
  - Includes all in stock door styles and 1 pack of tri fold brochures.
- Framed Sample Pack
  - Includes all in stock door styles and 1 pack of tri fold brochures.
- Hardware Board Set
- Booklet brochure (pack of 15)
- Tri-fold brochure (pack of 25)
- Printed Catalog
- HDI branded door sample carrying bag

\*Please use the HDI Online Store, found at [www.shop.harbordistributors.com](http://www.shop.harbordistributors.com) to order sales aids.



**HARBOR**  
DISTRIBUTORS

[www.harbordistributors.com](http://www.harbordistributors.com)

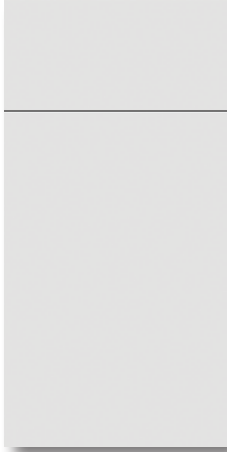
Section 3.01

# HDI Euro Series



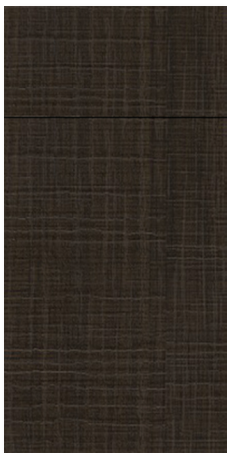


## HDI EURO SERIES DOOR STYLES



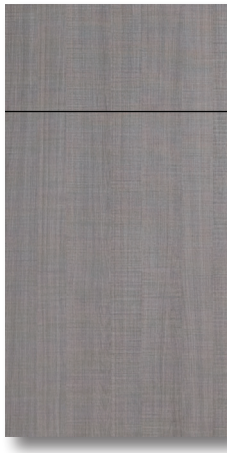
### Cristallo *White*

High gloss white thermofoil slab door with 1/16" reveal.



### Tuscan *Espresso*

Brown textured melamine slab door with 1/16" reveal.



### Tuscan *Smoke*

Grey textured melamine slab door with 1/16" reveal.



Harbor Distributors, Inc.  
3751 62nd Avenue N  
Pinellas Park, FL 33781  
Ph: 727.539.1517  
Fx: 727.539.1531  
customerservice@harbordistributors.com

## STANDARD PRODUCT

### MATERIALS AND CONSTRUCTION

#### Case

- Frameless construction using premium, engineered wood panels.
- Sides and back panels are 3/4" white melamine veneered and fully cased with white edge banding. Interiors are white.
- Shelves are 3/4" thick, adjustable and edge banded. They are full depth with metal shelf clips in wall and base cabinets.
- Sink base front rails are water resistant aluminum.
- Exteriors are white. Additional 3/4" overlay panel to match doors is available separately.

#### Drawers

- Blum, full extension and soft closing. Sides are white metal. Bottom and back is 5/8" white melamine. Fronts on optional roll out tray are white melamine.

#### Hinges

- European style soft closing hinge, 6 way adjustable. 110 degree opening.

#### Doors

- Tuscan Series: Textured melamine, slab 7/8" thick.
- Cristallo Series: High gloss thermofoil, slab door 7/8" thick.

#### Reveals

- All doors and drawer fronts have a 1/16" reveal.

#### Toe Kick

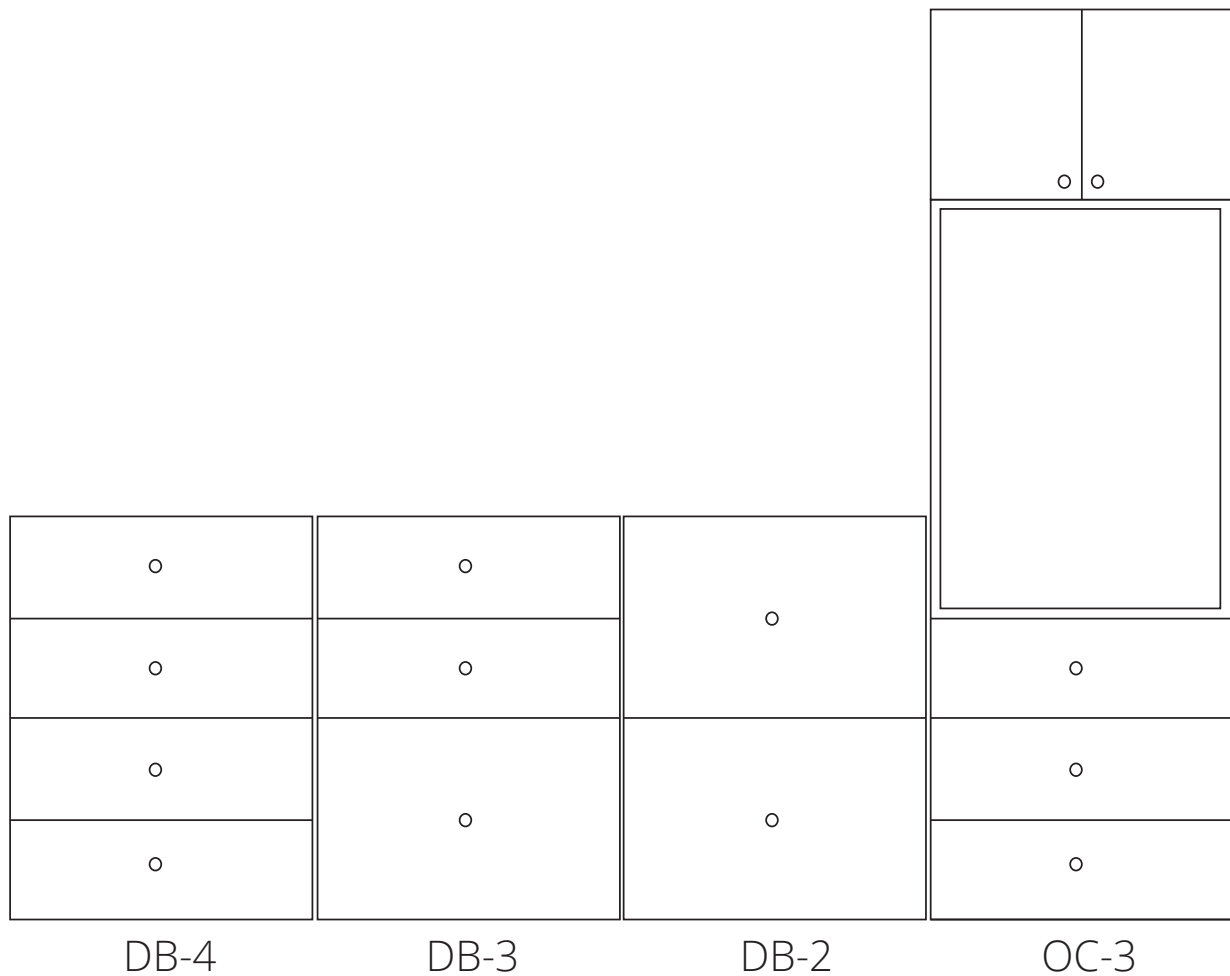
- Cabinets are on plastic, adjustable legs.
- Toe kick cover is plastic with a premium brushed aluminum front plate and is water resistant. Features a gasket for proper seal to the floor. Can be trimmed to fit.

#### Drawer Fronts

- Small drawer fronts height of 7 3/8"
- Large drawer fronts height of 14 7/8"
- All drawer cabinets are designed to align perfectly when placed next to additional drawer cabinets, providing for a very clean and symmetrical design. See spec drawing on next page.

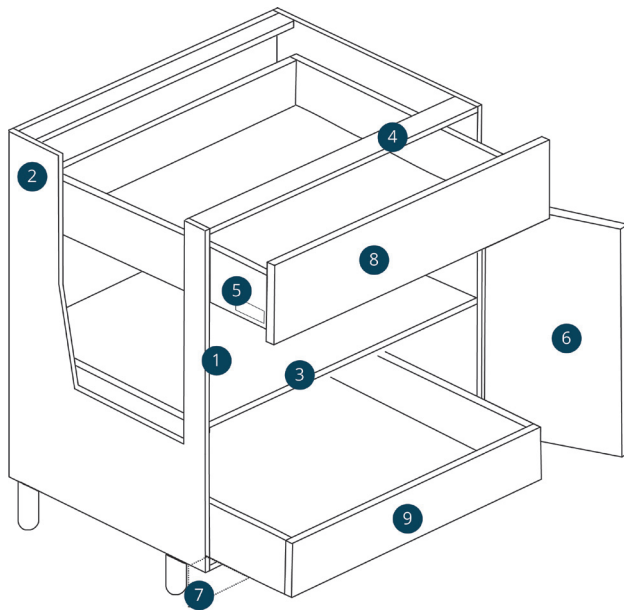
## STANDARD PRODUCT (cont.)

### DRAWER CABINET SPEC DRAWING



Spec drawing showing drawer front alignment.  
 Not drawn to scale.

## PRODUCT SPECIFICATIONS/NOTES



- 1 Frameless construction using premium, engineered wood panels, fully encased with white edgebanding.
- 2 Slides and back panels are 3/4" thick white melamine veneered. Integrated finished panels or 3/4" thick overlay panels are available for exposed ends.
- 3 Shelves are full depth 3/4" thick, adjustable and edge banded. Included shelf clips are metal. Shelves are not included in sink base cabinets.
- 4 Front rail of sink base cabinets is water resistant aluminum. Front rail of standard base cabinets is MDF melamine.
- 5 Drawer boxes are Blum, full extension and soft closing. Sides are white metal. Bottom and back is 5/8" thick melamine.

- 6 Doors are 7/8" thick slab. Door reveals are 1/16". Hinges are European 6-way adjustable and soft closing.

- 7 Base cabinets are on plastic, adjustable legs and need additional toe kick plate. Toe kick material comes in 8' lengths or is sold by the foot. Toe kick is plastic with a brushed aluminum front plate. Toe kick features a rubber gasket for proper seal to the floor. Dealers opting for door matched toe kick can use OLF496.

- 8 Drawer reveals are 1/16". Small drawer front heights are 7 3/8". Large drawer front heights are 14 7/8". All drawer fronts align perfectly when placed next to each other, providing for a very clean and symmetrical design. See spec drawing on page 4 of catalog.

- 9 Optional roll trays (ROT) are available for certain base and pantry cabinets. The optional roll trays feature the same drawer system as cabinet drawers. The front panel is white melamine, fully encased.

### DOOR CLEARANCE

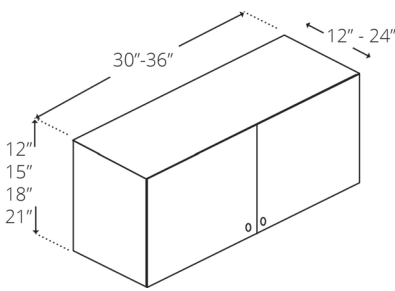
Because of the full overlay, clearance of doors and drawers must be taken into consideration during the design process to assure proper operation of all doors, drawers and roll trays.

### SINGLE DOOR CABINET HINGING

All single door cabinets feature one cabinet side prepped for hinges. For assembled jobs, please specify hinged side for all single door cabinets at time of order.

### VANITY CABINETS

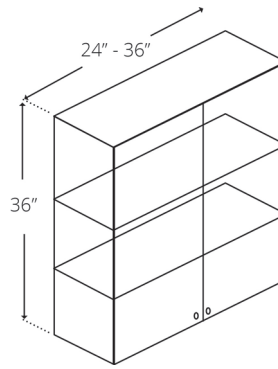
All vanity cabinets are 34 1/2" tall and 21" deep. Full height door vanity cabinets do not come with a modesty panel to cover the sink when the doors are open.



**DOUBLE DOOR  
12" - 21" HIGH  
WALL CABINETS**

W3012      W3018  
W3612      W3618  
W3015      W3021  
W3315      W3612-24\*  
W3615      W3618-24\*

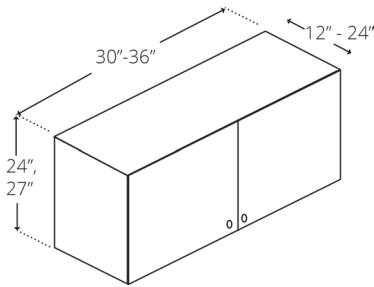
\*24" deep



**DOUBLE DOOR  
36" HIGH  
WALL CABINETS**

W2436  
W2736  
W3036  
W3336  
W3636

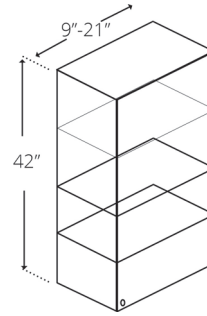
\*Includes 2 shelves



**DOUBLE DOOR  
24" - 27" HIGH  
WALL CABINETS**

W3024      W3624-24\*  
W3624  
W3027

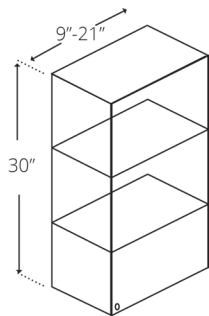
\*24" deep  
Includes 1 shelf



**SINGLE DOOR  
42" HIGH  
WALL CABINETS**

W0942  
W1242  
W1542  
W1842  
W2142

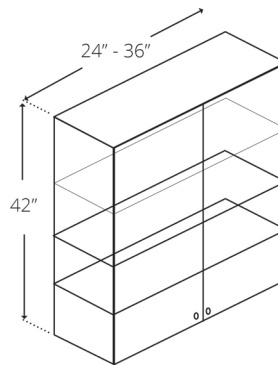
\*Includes 3 shelves



**SINGLE DOOR  
30" HIGH  
WALL CABINETS**

W0930  
W1230  
W1530  
W1830  
W2130

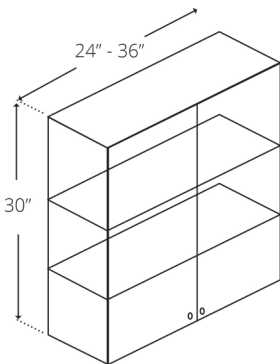
\*Includes 2 shelves



**DOUBLE DOOR  
42" HIGH  
WALL CABINETS**

W2442  
W2742  
W3042  
W3342  
W3642

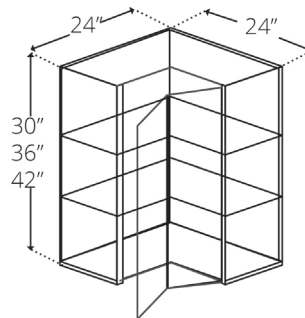
\*Includes 3 shelves



**DOUBLE DOOR  
30" HIGH  
WALL CABINETS**

W2430  
W2730  
W3030  
W3330  
W3630

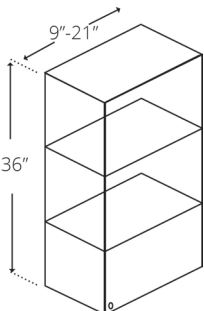
\*Includes 2 shelves



**BI-FOLD DOOR  
30" - 42" HIGH  
CORNER WALL CABINETS**

CW2430  
CW2436  
CW2442

\*30"-36" include 2  
shelves. 42" includes  
3 shelves

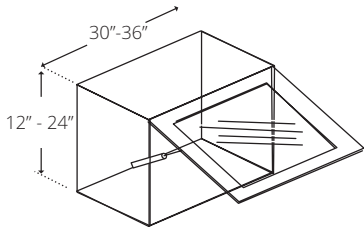


**SINGLE DOOR  
36" HIGH  
WALL CABINETS**

W0936  
W1236  
W1536  
W1836  
W2136

\*Includes 2 shelves

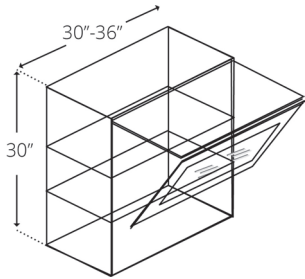




LIFT UP DOOR  
12" - 24" HIGH  
WALL CABINETS

W2415LIFT	W3615LIFT
W2418LIFT	W3018LIFT
W2421LIFT	W3618LIFT
W3012LIFT	W3024LIFT
W3612LIFT	W3624LIFT
W3015LIFT	

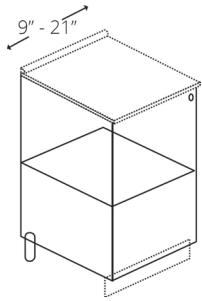
\*Includes 1 shelf  
Aluminum Door  
Glass sold separately



DOUBLE LIFT UP DOOR  
30" HIGH  
WALL CABINETS

W3030LIFT

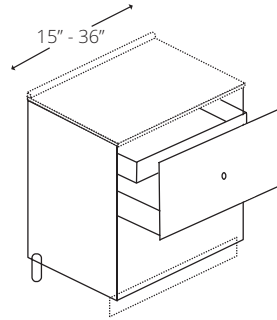
\*Includes 2 shelves  
Aluminum Door  
Glass sold separately



**SINGLE  
FULL HEIGHT DOOR  
BASE CABINETS**

B09FHD (no shelf)  
B12FHD  
B18FHD  
B21FHD

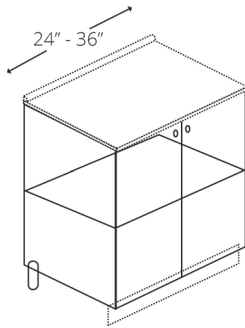
\*Includes 1 shelf



**TWO DRAWER  
WITH INSIDE DRAWER  
BASE CABINETS**

DB15-2SP DB30-2SP  
DB18-2SP DB33-2SP  
DB21-2SP DB36-2SP  
DB24-2SP

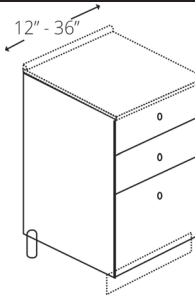
\*Drawer front 14  
7/8" H



**DOUBLE  
FULL HEIGHT DOOR  
BASE CABINETS**

B24FHD  
B27FHD  
B30FHD  
B33FHD  
B36FHD

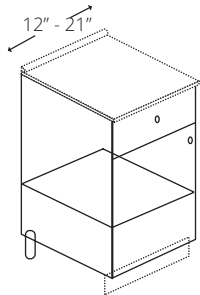
\*Includes 1 shelf



**THREE DRAWER  
BASE CABINETS**

DB12-3 DB30-3  
DB15-3 DB33-3  
DB18-3 DB36-3  
DB21-3  
DB24-3

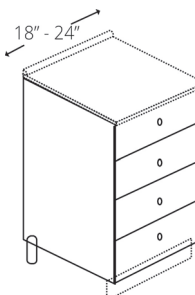
\*Top 2 drawer fronts 7 3/8" H  
Lower drawer front 14 7/8" H



**SINGLE  
DOOR & DRAWER  
BASE CABINETS**

B12  
B15  
B18  
B21

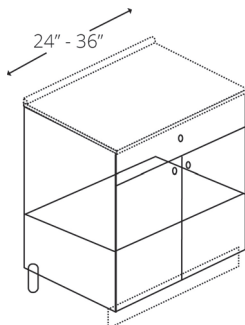
\*Includes 1 shelf



**FOUR DRAWER  
BASE CABINETS**

DB18-4  
DB21-4  
DB24-4

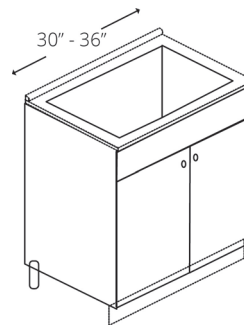
\*Drawer fronts 7 3/8" H



**SINGLE DRAWER  
DOUBLE DOOR  
BASE CABINETS**

B24  
B27  
B30  
B33  
B36

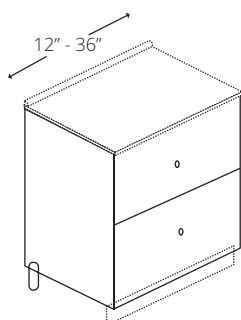
\*Includes 1 shelf



**SINGLE FALSE DRAWER  
DOUBLE DOOR  
SINK BASE CABINETS**

SB30  
SB33  
SB36

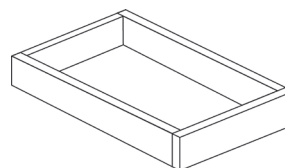
\*Features water resistant alu-  
minum top rail and floor liner



**TWO DRAWER  
BASE CABINETS**

DB12-2 DB30-2  
DB15-2 DB33-2  
DB18-2 DB36-2  
DB21-2  
DB24-2

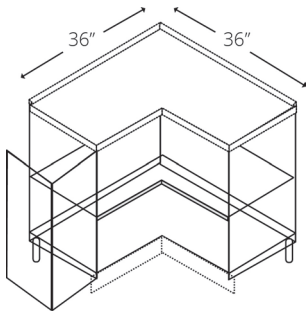
\*Drawer front 14  
7/8" H



**ROLL OUT TRAY  
SOFT CLOSE**

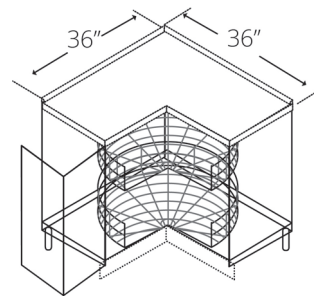
ROT18 ROT33  
ROT21 ROT36  
ROT24  
ROT27  
ROT30

\*Blum drawer box with full  
extension soft closing glides.  
Works in vanities as well.



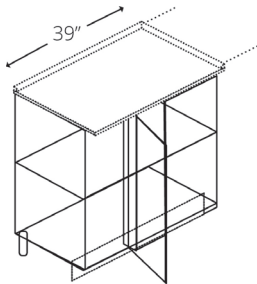
EASY REACH  
CORNER BASE CABINET  
WITH SHELF  
  
ER36

\*Includes 1 shelf



EASY REACH  
CORNER BASE CABINET  
WITH LAZY SUSAN  
  
ER36LS

\*Includes 2 metal lazy susan  
trays



SINGLE  
FULL HEIGHT DOOR  
BLIND BASE CABINET  
  
BLINDB42FHD

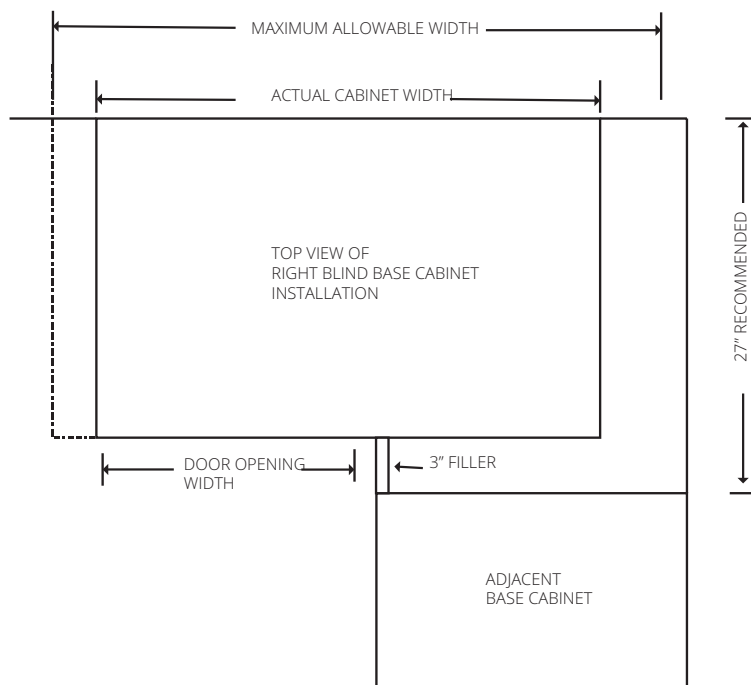
Actual cabinet is 39"  
Overlay filler not included

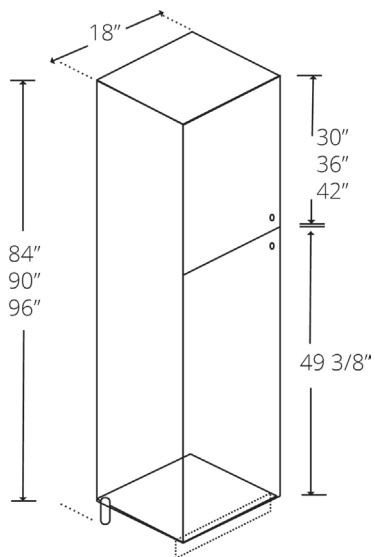
Blind right is shown in picture  
\*Includes 1 shelf

## BLIND BASE CABINET INSTALLATION RECOMMENDATIONS

SKU	ACTUAL CABINET WIDTH	MIN/MAX RECOM- MENDED DIMEN- SIONS FOR INSTAL- LATION	WIDTH OF DOOR OPENING
BLINDB42FHD	39"	42" - 45"	14 7/8"

\*NOTE: MINIMUM PULL RECOMMENDATION INCLUDES 3" STILE REVEAL  
TO CORNER

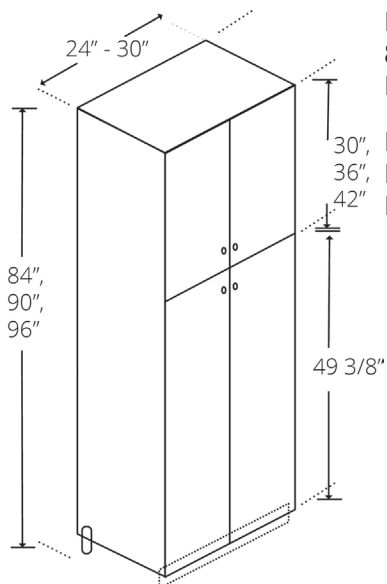




**SINGLE DOOR 18" WIDE  
84", 90" & 96" HIGH  
PANTRY CABINET**

P1884-24  
P1890-24  
P1896-24

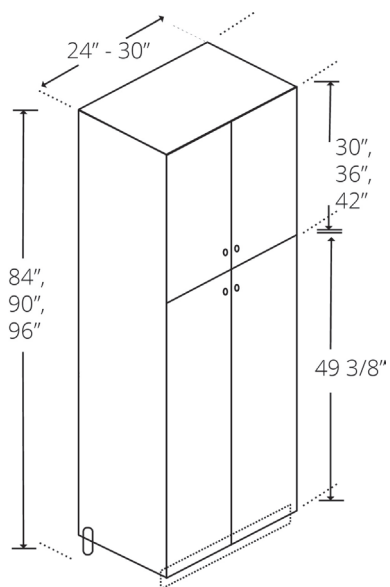
\*84" & 90" includes 5 shelves  
96" includes 6 shelves



**DOUBLE DOOR 24" WIDE  
84", 90" & 96" HIGH  
PANTRY CABINET**

P2484-24  
P2490-24  
P2496-24

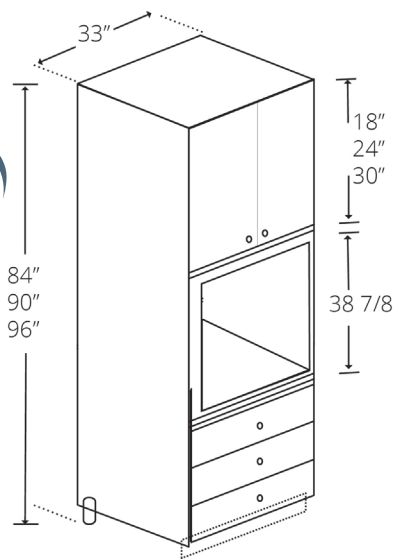
\*84" & 90" includes 5 shelves  
96" includes 6 shelves



**DOUBLE DOOR 30" WIDE  
84", 90" & 96" HIGH  
PANTRY CABINET**

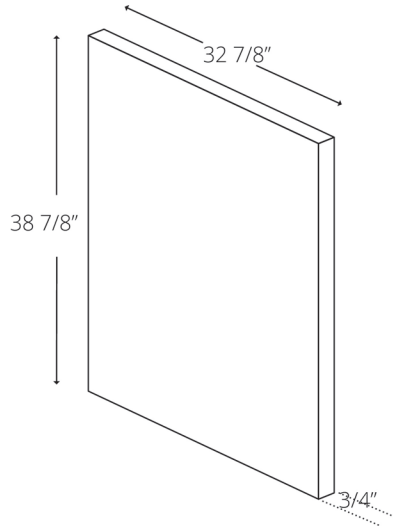
P3084-24  
P3090-24  
P3096-24

\*84" & 90" includes 5 shelves  
96" includes 6 shelves



**SINGLE OVEN 33" WIDE**  
**84", 90" & 96" HIGH**  
**OVEN CABINET 3 DRW**

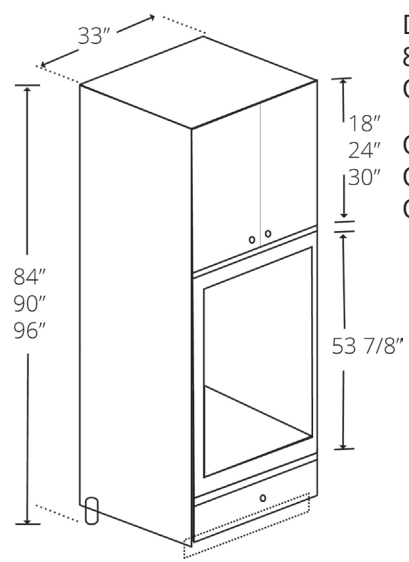
OC338424-3  
 OC339024-3  
 OC339624-3



**SINGLE OVEN 33" WIDE**  
**OVERLAY PANEL**

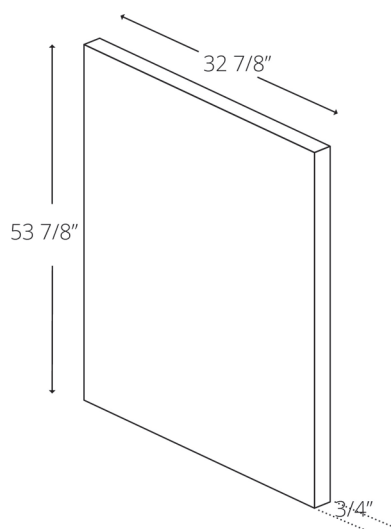
CUT OPENING ON SITE  
 INCLUDED WITH OVEN  
 CABINET

\*90" & 96" include 1 shelf in  
 upper  
 3 drawers beneath oven



**DOUBLE OVEN 33" WIDE**  
**84", 90" & 96" HIGH**  
**OVEN CABINET 1 DRW**

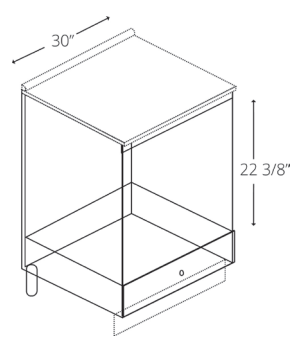
OC338424-1  
 OC339024-1  
 OC339624-1



**DOUBLE OVEN 33" WIDE**  
**OVERLAY PANEL**

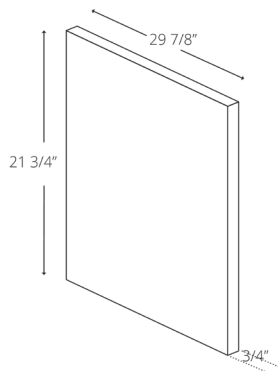
CUT OPENING ON SITE  
 INCLUDED WITH OVEN  
 CABINET

\*90" & 96" include 1 shelf in  
 upper  
 1 drawer beneath oven



**BASE MICROWAVE**  
**30" WIDE**  
**BASE CABINET 1 DRW**  
 BM30

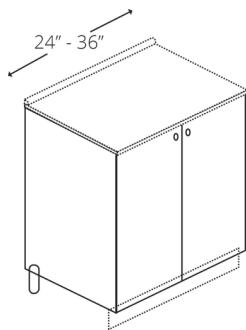
\*Drawer front 7  
 3/8" H



**BASE MICROWAVE**  
**30" WIDE**  
**OVERLAY PANEL**

CUT OPENING ON SITE  
 INCLUDED WITH OVEN  
 CABINET

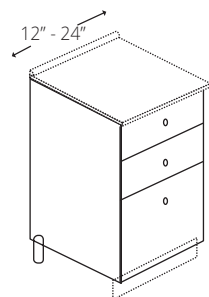




FULL HEIGHT DOOR  
VANITY CABINETS  
21" DEEP

V24FHD  
V27FHD  
V30FHD  
V33FHD  
V36FHD

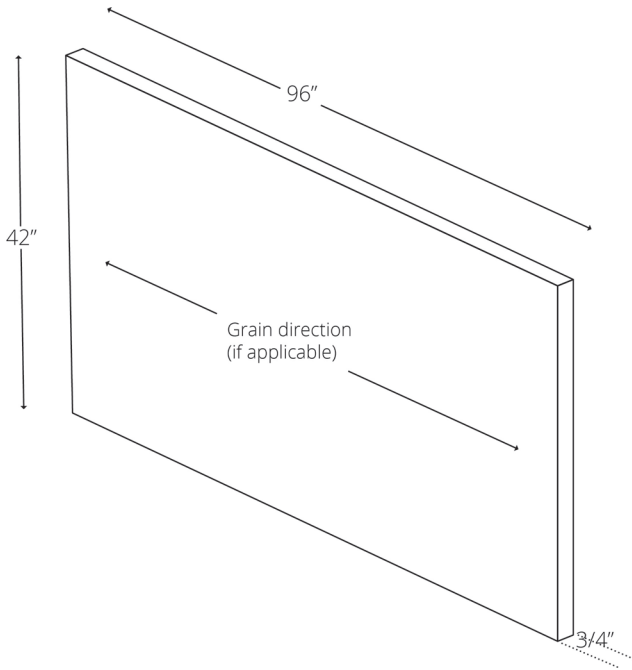
\*Features water resistant,  
aluminum top rail.



THREE DRAWER  
VANITY CABINETS  
21" DEEP

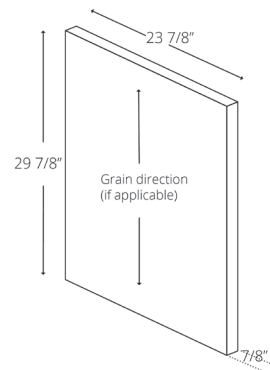
VDB12-3  
VDB15-3  
VDB18-3  
VDB21-3  
VDB24-3

\*Top 2 drawer fronts 7 3/8" H  
Lower drawer front 14 7/8" H



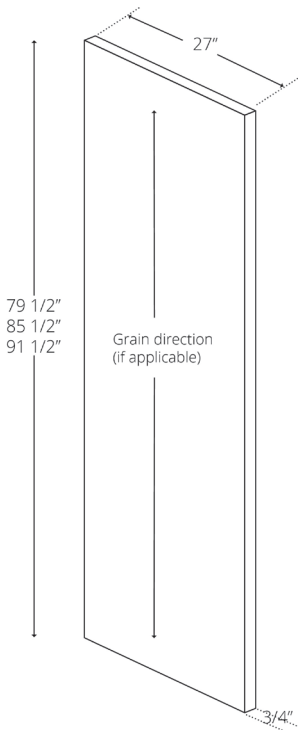
ISLAND PANEL  
42" x 96"

PANEL4296



DISHWASHER  
OVERLAY PANEL

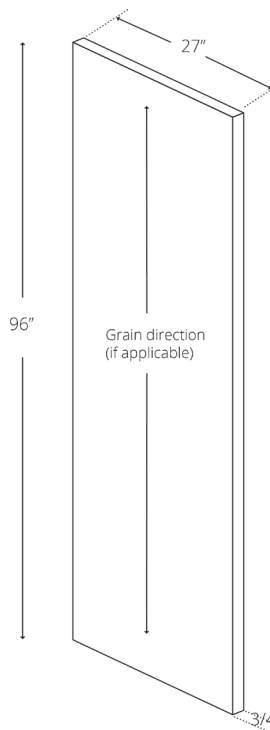
DWPANEL



TALL FINISHED  
END PANELS

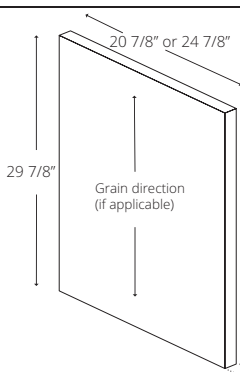
EP2784  
EP2790  
EP2796

\*For use on exposed tall  
pantry & oven cabinet ends.



REFRIGERATOR  
END PANEL

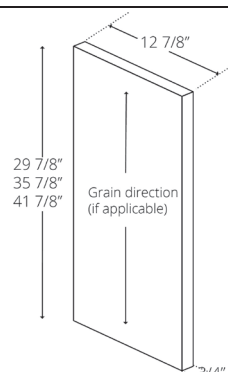
REP



BASE/VANITY FINISHED  
END PANEL

EP2230  
EP2530

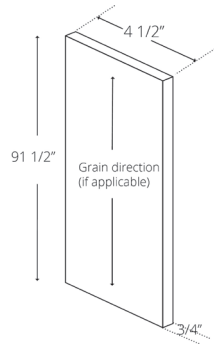
\*For use on exposed base  
cabinet ends.



WALL FINISHED  
END PANEL

EP1330  
EP1336  
EP1342

\*For use on exposed wall-  
cabinet ends.

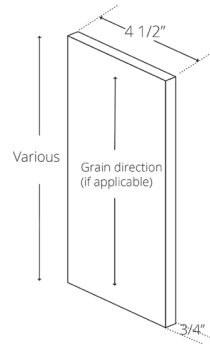


**4 1/2" FILLER**  
**3/4" x 4 1/2" x 91 1/2"**

**TF4.5**

**UNIVERSAL**

\*White melamine to match carcass



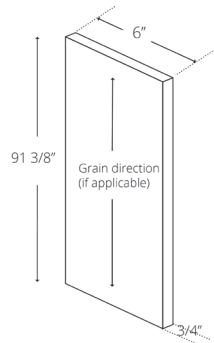
**4 1/2" OVERLAY FILLER TALL**

**OLF484**  
**3/4" x 4 1/2" x 79 3/8"**

**OLF490**  
**3/4" x 4 1/2" x 85 3/8"**

**OLF496**  
**3/4" x 4 1/2" x 91 3/8"**

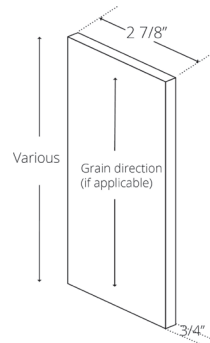
\*Matches door



**6" OVERLAY FILLER**  
**3/4" x 6" x 91 3/8"**

**OLF696**

\*Matches door



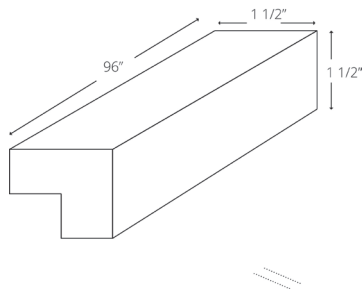
**2 7/8" OVERLAY FILLER BASE & WALL**

**OLF330**  
**3/4" x 2 7/8" x 29 7/8"**

**OLF336**  
**3/4" x 2 7/8" x 35 7/8"**

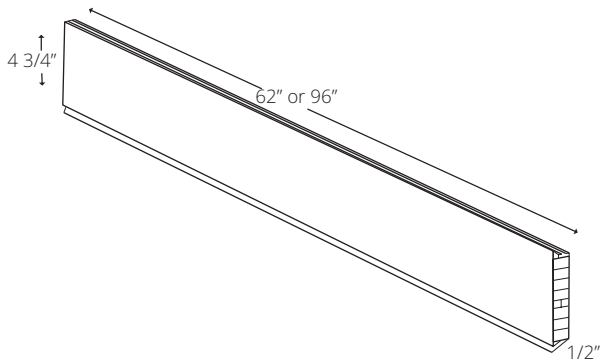
**OLF342**  
**3/4" x 2 7/8" x 41 7/8"**

**NOTE:**  
Back/Sub filler for overlay fillers is not included.  
Recommend using TF4.5 (sold separately)



**MODERN LIGHT RAIL/ TOP TRIM**

**LRM8**



**ALUMINUM TOE KICK PANEL**  
**1/2" X 4 3/4" X 62" or**  
**1/2" X 4 3/4" X 96"**

**TKS5**  
**TKS8**

\*Features a brushed aluminum front plate on a plastic backing.



Harbor Distributors, Inc.  
3751 62nd Avenue N  
Pinellas Park, FL 33781  
Ph: 727.539.1517  
Fx: 727.539.1531  
[customerservice@harbordistributors.com](mailto:customerservice@harbordistributors.com)

## EURO SERIES CABINET CARE

The cabinetry is designed to withstand daily use associated with normal household activities and should be treated like fine furniture. Follow these recommendations to care for your cabinetry.

### CLEANING CABINET SURFACES

The cabinetry may be safely cleaned by using a moist, soft cloth (not a paper towel) and a mild, non-detergent soap (100 parts water and 1 part liquid dish soap is recommended). Dry wet surface immediately with a soft cloth. Do not use products that may contain chlorine, acetone, solvents or any other abrasive substance. Do not use abrasive soap pads or steel wool.

### THERMOFOIL AND TEXTURED MELAMINE DOORS

While very durable, these products can be damaged by excessive heat. Properly installed heat shields protect cabinets adjacent to ovens, ranges, and dishwashers. It is recommended to open doors and drawers away from oven during high temperature, self-cleaning cycles. Damage caused from excessive heat is not covered under warranty.

### HIGH GLOSS DOORS

HDI Euro Series high gloss doors are covered with a protective film from the manufacturer. This film should be removed after cabinet installation. The surface becomes more scratch resistant over the first few days after the protective film is removed. To speed up the process, lightly polish the surface immediately with a polish such as Novus 1 Polish. Weekly polishing is recommended to keep your cabinetry looking brand new. Only use a soft cloth, such as micro-fiber and never use paper towels, brushes, scourers or scrapers.



[www.harbordistributors.com](http://www.harbordistributors.com)

Section 4.01

# HDI Framed Series



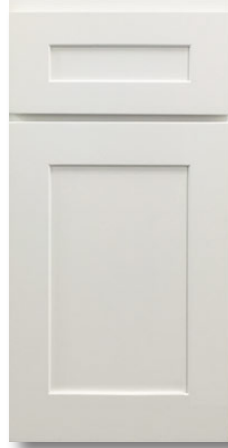


## HDI FRAMED SERIES DOOR STYLES



### Desoto *Espresso*

Full overlay birch door with 2-7/8" stiles and rails. The center panel is MDF.



### Desoto *White*

Full overlay MDF door with 2-7/8" stiles and rails. The reversed raised center panel is MDF.



### Havana *Café Glazed*

Full overlay birch applied moulding door with 2-1/4" stiles and rails. The raised center panel is solid wood.



### Madeira *Cherry*

Full overlay birch applied moulding door with 2-5/8" stiles and rails. The raised center panel is solid wood.



### Pasadena *Linen Glazed*

Full overlay MDF applied moulding door with 2-5/8" stiles and rails. The applied moulding is solid wood.



Harbor Distributors, Inc.  
3751 62nd Avenue N  
Pinellas Park, FL 33781  
Ph: 727.539.1517  
Fx: 727.539.1531  
customerservice@harbordistributors.com

## STANDARD PRODUCT

### MATERIALS AND CONSTRUCTION

#### Case

- Traditional face frame construction using select birch.
- Face frames are solid 3/4" thick with 1-1/2" stiles and rails. Mortise and tenon joints.
- Sides are birch veneered 1/2" plywood. The interior features a clear-coat finish.
- Shelves are 5/8" thick birch veneered plywood sealed with a clear-coat, adjustable and front edge banded.
- Backs are solid 1/2" plywood. Base cabinet backs extend to the floor, providing optimal structural stability.

#### Drawers

- 5/8" thick solid hard wood, dovetailed joints and clear-coated.
- Bottoms are 5/16" birch plywood fully captured.
- Slides are under mounted full-extension soft close.
- Drawer fronts are full overlay 5 piece construction.

#### Hinges

- Hinges are 6-way adjustable. Soft closing hinges standard on select styles.

#### Doors

- Mortise and Tenon full overlay.

#### Reveals

- Wall cabinet doors have a 1/4" reveal on the bottom and sides. The top reveal is 1" for moulding installation.
- Base cabinet doors have a 1/4" reveal. The top drawer head has a 1/4" reveal at the bottom and sides and a 1" reveal on top.

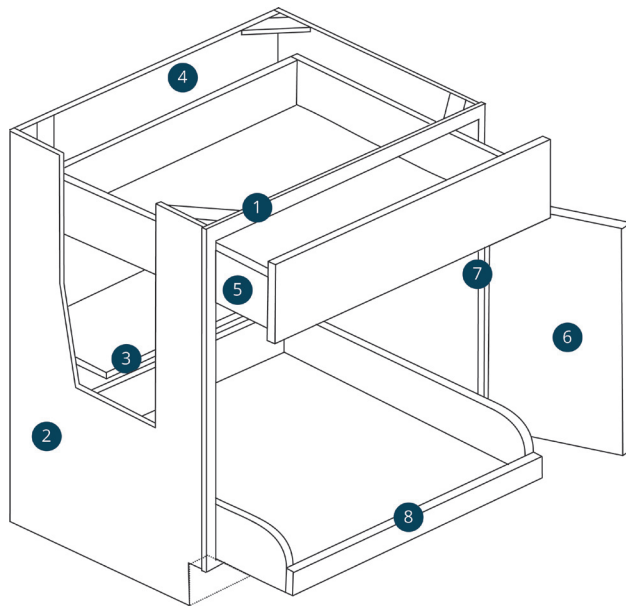
#### Finish

- Catalyzed conversion varnish top coat with UV protection is applied to doors, drawers and face frames.
- Glazing is applied to select doors and drawer fronts.
- 

#### Species

- Birch

## PRODUCT SPECIFICATIONS/NOTES



- 1 Traditional face frame construction using select birch. Face frames are solid 3/4" thick with 1-1/2" stiles and rails. Mortise and tenon joints.
- 2 Slides are birch veneered 1/2" plywood. The interior features a clear coat finish.
- 3 Shelves 5/8" thick birch veneered plywood sealed with a clear-coat finish, adjustable and front edge banded.
- 4 Backs are solid 1/2" thick plywood. Base cabinet backs extend to the floor, providing optimal structural stability.
- 5 Drawers are 5/8" thick solid hard wood, dovetail joints and clear coated. Bottoms are 1/4" birch plywood fully captured. Slides are under mounted, full extension and soft closing.

- 6 Doors are full overlay. Butt doors on all sizes up to 39" wide.
- 7 Hinges are 6-way adjustable. Soft closing hinges are standard on select styles.
- 8 Optional roll trays (ROT) are available for certain base and pantry cabinets as an upgrade. The optional roll trays are adjustable, all wood, two point dovetail and soft closing.

### DOOR REVEALS

Door reveals are 1" at the top of all cabinets and 1/4" on remaining sides. The 1" reveal at the top of wall cabinets allow for moulding application.

### DOOR CLEARANCE

Door and drawer clearance must be taken into consideration during the design process to assure proper operation of all doors, drawers and roll trays.

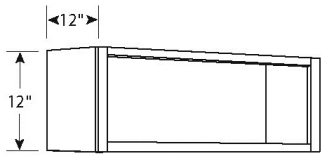
### VANITY CABINETS

All vanity cabinets are 34 1/2" tall and 21" deep.

### TOE KICK MATERIAL

All base, vanity and tall cabinets require toe kick material. This item (TKS8) needs to be ordered in addition to the cabinetry.

*In keeping with a policy of continuous refinement, Harbor Distributors, Inc. reserves the right to alter specifications without general notice or obligation to make similar changes in previously produced product.*

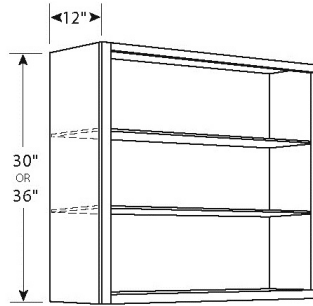


DOUBLE DOOR  
12" HIGH  
WALL CABINETS

W3012  
W3612  
W3912

W361224\*

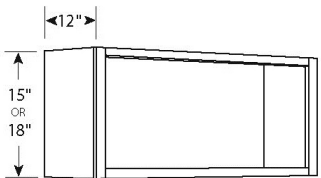
\*24" deep



DOUBLE DOOR  
30" & 36" HIGH  
WALL CABINETS

W2430    W2436    W4236\*  
W2730    W2736  
W3030    W3036  
W3330    W3336  
W3630    W3636  
W4230\*    W3936

\*Has center stile

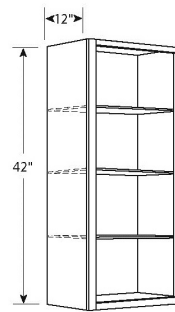


DOUBLE DOOR  
15" & 18" HIGH  
WALL CABINETS

W3015    W3018  
W3315    W3618  
W3615

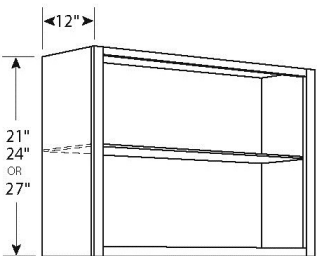
W361824\*

\*24" deep



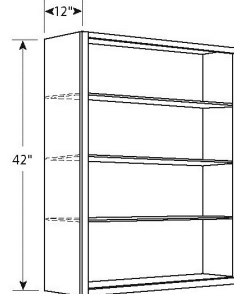
SINGLE DOOR  
42" HIGH  
WALL CABINETS

W0942  
W1242  
W1542  
W1842  
W2142



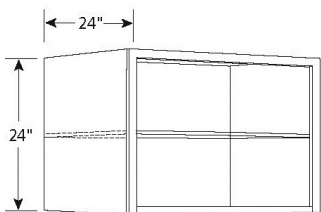
DOUBLE DOOR  
21" - 27" HIGH  
WALL CABINETS

W3021    W3624  
W3024  
W3027



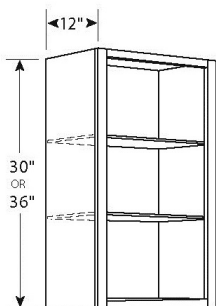
DOUBLE DOOR  
42" HIGH  
WALL CABINETS

W2442  
W2742  
W3042  
W3342  
W3642



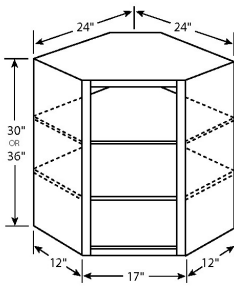
DOUBLE DOOR  
24" HIGH 24" DEEP  
REFRIGERATOR CABINET

W362424

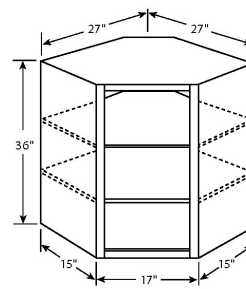


SINGLE DOOR  
30" & 36" HIGH  
WALL CABINETS

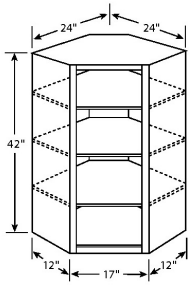
W0930    W0936  
W1230    W1236  
W1530    W1536  
W1830    W1836  
W2130    W2136



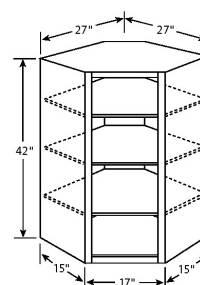
CORNER  
30" & 36" HIGH  
WALL CABINETS  
  
CW2430  
CW2436



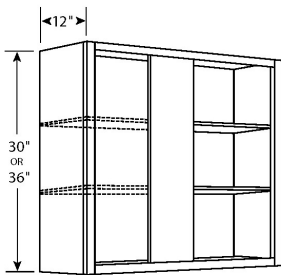
CORNER 15" DEEP  
36" HIGH  
WALL CABINETS  
  
CW2736



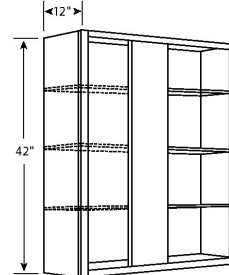
CORNER  
42" HIGH  
WALL CABINETS  
  
CW2442



CORNER 15" DEEP  
42" HIGH  
WALL CABINETS  
  
CW2742



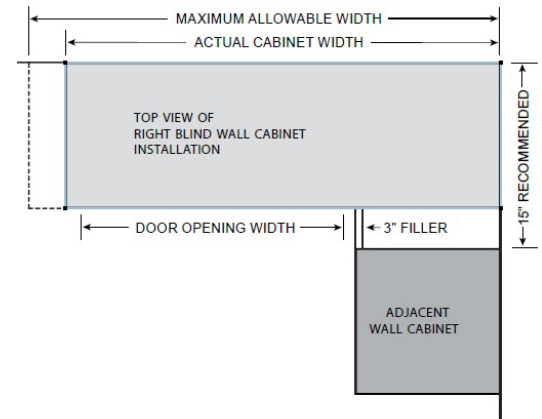
SINGLE DOOR  
30" & 36" HIGH  
BLIND WALL CABINETS  
  
BLINDW3030 BLINDW2436  
BLINDW3630 BLINDW3036  
BLINDW3636



SINGLE DOOR  
42" HIGH  
BLIND WALL CABINETS  
  
BLINDW2442  
BLINDW3042  
BLINDW3642

## BLIND WALL CABINET INSTALLATION RECOMMENDATIONS

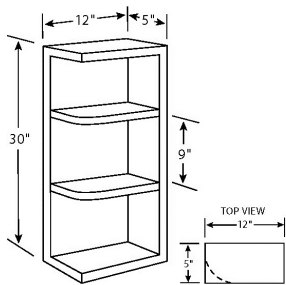
SKU	ACTUAL CABINET WIDTH	MIN/MAX RECOMMENDED DIMENSIONS FOR INSTALLATION	WIDTH OF DOOR OPENING
BLINDW24XX	24"	24" - 26-1/2"	9"
BLINDW30XX	30"	30" - 32 1/2"	15"
BLINDW36XX	36"	36" - 38 1/2"	20 3/4"



\*NOTE: MEASUREMENTS BASED ON DESIGN USING A 4 1/2" VERTICAL IN FACE FRAME.

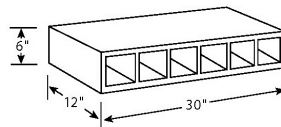
ORDER FILLER SEPARATELY.





12" DEEP  
30" HIGH  
1/4 ROUND SHELVES

WQR630

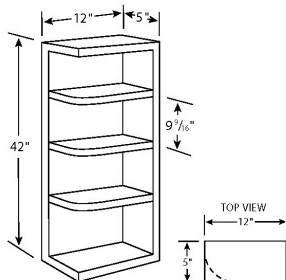


12" DEEP  
WINE CUBBIES

WCU30

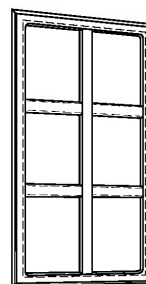
\*NOTE: Can be installed vertically or horizontally.

Made of 3/4" veneer plywood with interiors finished to match & front edge banded.



12" DEEP  
42" HIGH  
1/4 ROUND SHELVES

WQR642

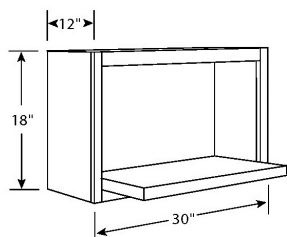


MULLION DOORS

MDXXXX

\*NOTE: Available in select door styles.

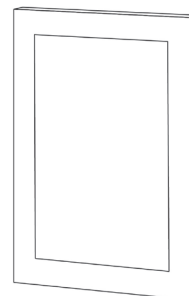
Glass not supplied.



12" DEEP  
18" HIGH  
MICROWAVE CABINET

MWS301812

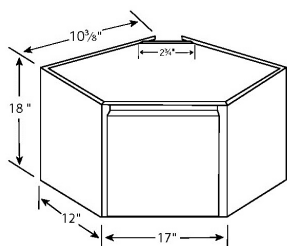
NOTE: Shelf is 17" deep.



GLASS DOORS

GDXXXX

\*NOTE: Available in select door styles.

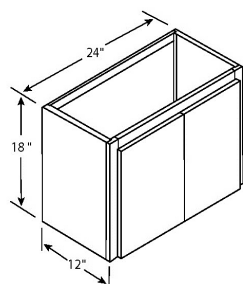


DIAGONAL  
APPLIANCE GARAGE

ADAG

NOTE: Single door hinged to side stile.

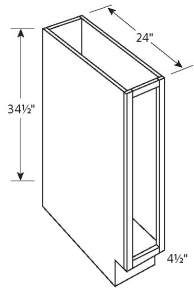
NOTE: No bottom panel, no under rail.



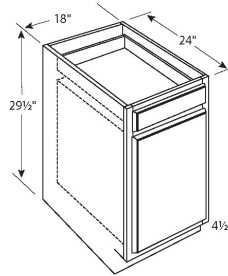
DOUBLE DOOR  
APPLIANCE GARAGE

AGD2418

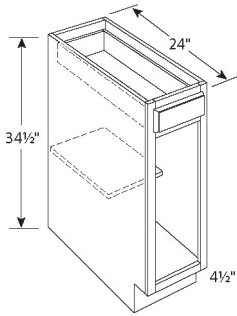
NOTE: Full frame cabinet, can be used as W2418.



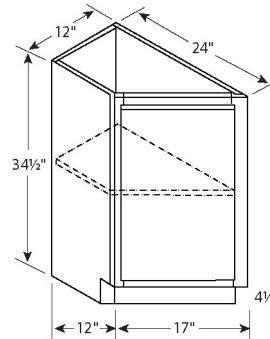
**SINGLE  
FULL HEIGHT DOOR  
BASE CABINETS**  
  
B09FHD (no shelf)



**FILE DRAWER**  
  
DDB18  
  
Top drawer 6-3/4" high  
Bottom drawer 16-1/2" high

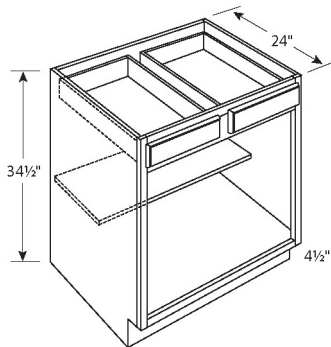


**SINGLE  
DOOR & DRAWER  
BASE CABINETS**  
  
B12  
B15  
B18  
B21



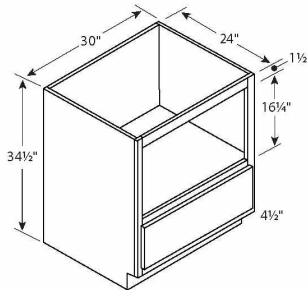
**SINGLE ANGLED  
FULL HEIGHT DOOR  
BASE CABINETS**  
  
TAB12FHDL  
TAB12FHDR

\*Left shown



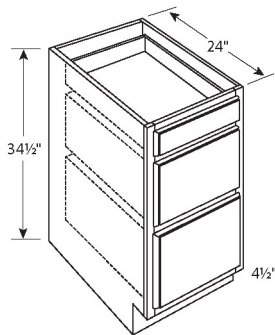
**DOUBLE  
DOOR & DRAWER  
BASE CABINETS**  
  
B24\*\* B36  
B27\*\* B39  
B30 B42\*  
B33

\*Has center stile  
\*\*Single drawer head



**MICROWAVE  
BASE CABINET**  
  
BM30

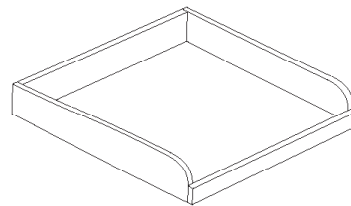
27" Wide opening  
Drawer head height 11"



**THREE DRAWER  
BASE CABINETS**

DB12 DB30  
DB15 DB36  
DB18  
DB21  
DB24

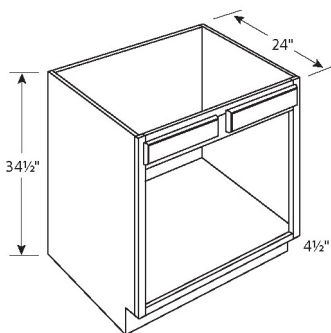
\*Top drawer height 6-1/2"  
Bottom drawers height 10-1/2"



**ROLL OUT TRAY**

ROT15 ROT30  
ROT18 ROT33  
ROT21 ROT36  
ROT24  
ROT27

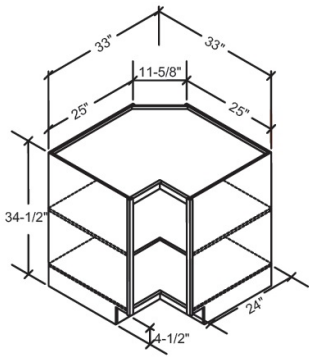
\*All wood dovetail drawers  
with radiused front edge. Soft  
closing glides.



**DOUBLE DOOR  
SINK BASE CABINETS**

SB30  
SB33  
SB36  
SB42\*

\*Has center stile

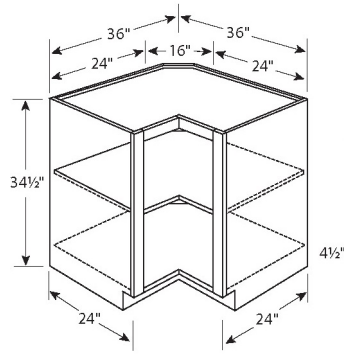


### EASY RACH CORNER BASE CABINET 33"

ER33

NOTE: Double hinged doors.  
NOTE: Order lazy susan kit  
separately.

\*Shelf is non adjustable and required.  
Only use shelf mounted lazy susan trays

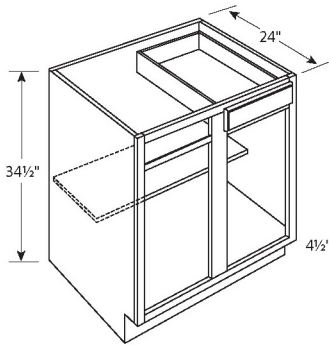


### EASY REACH CORNER BASE CABINET 36"

ER36

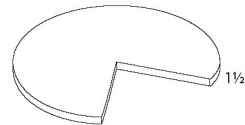
NOTE: Double hinged doors.  
NOTE: Order lazy susan kit  
separately.

\*Shelf is non adjustable and required. Only  
use shelf mounted lazy susan trays



### SINGLE DOOR & DRAWER BLIND BASE CABINETS

BLINDB36FHD  
BLINDB42  
BLINDB48



### WOOD LAZY SUSAN KIT

LSK

2/PKG.

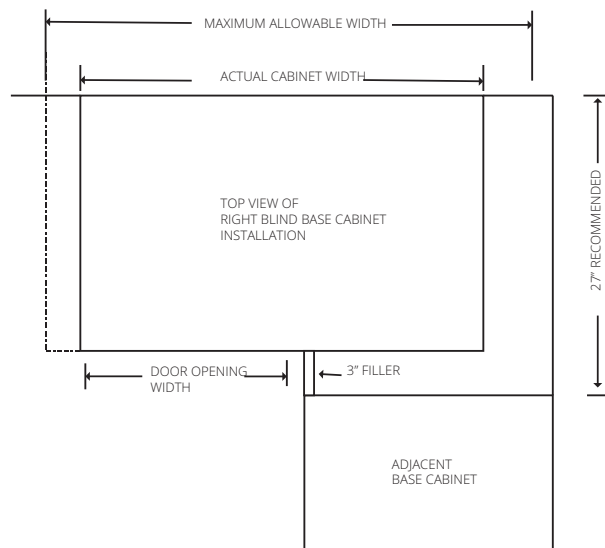
NOTE: Must be installed during  
the assembly of the ER

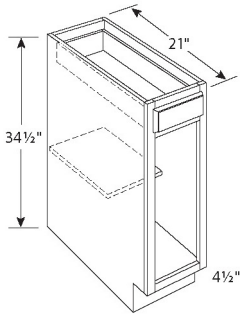
## BLIND BASE CABINET INSTALLATION RECOMMENDATIONS

SKU	ACTUAL CABINET WIDTH	MIN/MAX RECOM- MENDED DIMEN- SIONS FOR INSTAL- LATION	WIDTH OF DOOR OPENING
BLINDB36FHD	30"	39" - 43"	9"
BLINDB42	36"	42" - 46"	12"
BLINDB48	48"	48" - 52"	18"

\*NOTE: MINIMUM PULL RECOMMENDATION INCLUDES 3" STILE REVEAL  
TO CORNER.  
CENTER STILE IS 9"

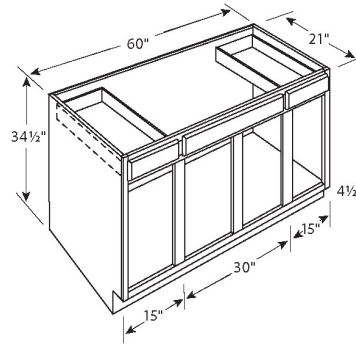
ORDER FILLER SEPARATELY.





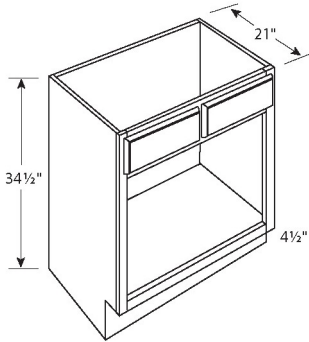
21" DEEP  
1 DOOR & DRAWER  
VANITY BASE CABINETS

VB12  
VB15  
VB18



21" DEEP  
2 DRAWER & 4 DOOR  
SINK BASE CABINET

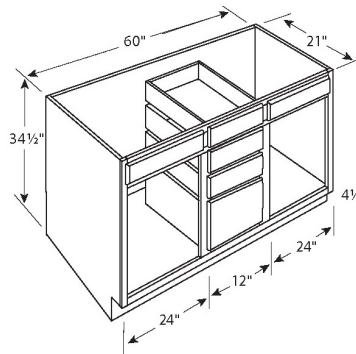
VSB60



21" DEEP  
2 DOOR  
VANITY SINK CABINETS

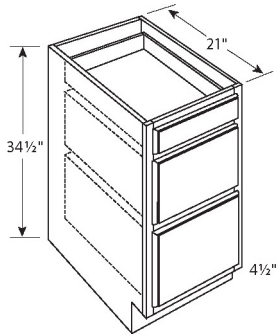
V24\*\* V33  
V27\*\* V36  
V30 V42\*

\*Has center stile  
\*\*Single false drawer head



21" DEEP  
4 DRAWER & 2 DOOR  
DOUBLE SINK CABINET

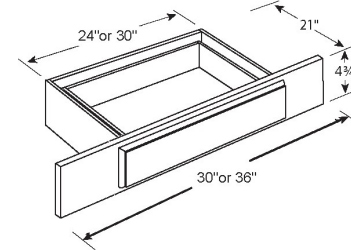
VDB60



21" DEEP  
3 DRAWER  
VANITY BASE CABINETS

VDB12  
VDB15  
VDB18  
VDB21  
VDB24

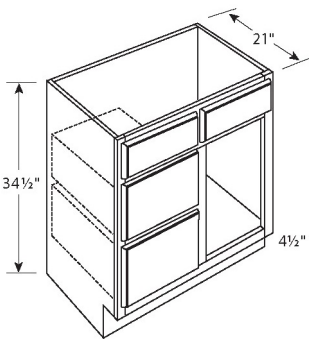
\*Top drawer height 6-1/2"  
Bottom drawers height 10-1/2"



VANITY  
LAP DRAWER

KD30  
KD36

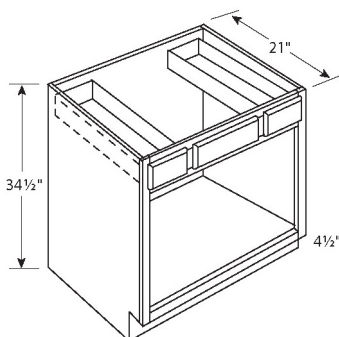
NOTE: Drawer head is slab with edge profile.  
Trimable 3" stile each side of drawer (each KD trimmable up to 6").



21" DEEP  
2 DRAWER & 1 DOOR  
VANITY SINK CABINETS

VSDL30 VSDR30  
VSDL36 VSDR36

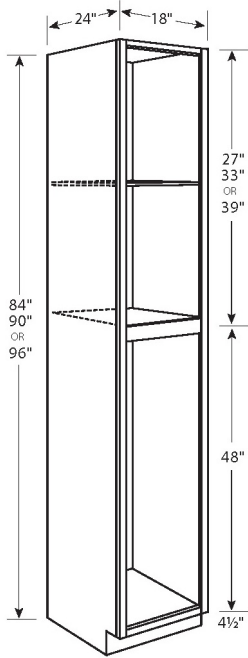
\*Left shown



21" DEEP  
2 DRAWER & DOOR  
VANITY SINK CABINETS

VSB36  
VSB42\*  
VSB48\*

\*\*Has center stile



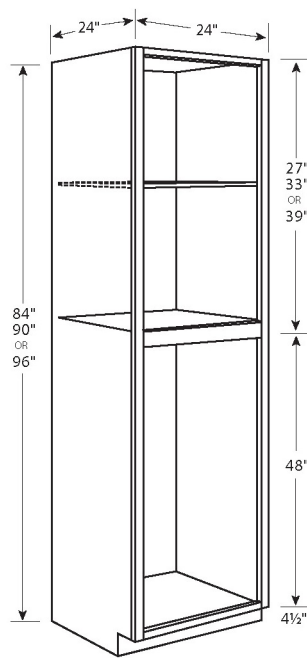
**SINGLE DOOR**  
**84" - 96" HIGH 18" WIDE**  
**PANTRY CABINETS**

P1884  
P1890  
P1896

Single door on top and bottom.

84" and 90" cabinets have 4 adjustable shelves and 1 fixed shelf.

96" cabinets have 5 adjustable shelves and 1 fixed shelf.



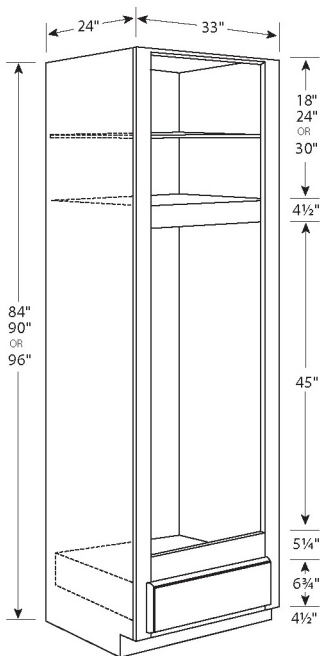
**DOUBLE DOOR**  
**84" - 96" HIGH 24" WIDE**  
**PANTRY CABINETS**

P2484  
P2490  
P2496

Butt doors on top and bottom.

84" and 90" cabinets have 4 adjustable shelves and 1 fixed shelf.

96" cabinets have 5 adjustable shelves and 1 fixed shelf.

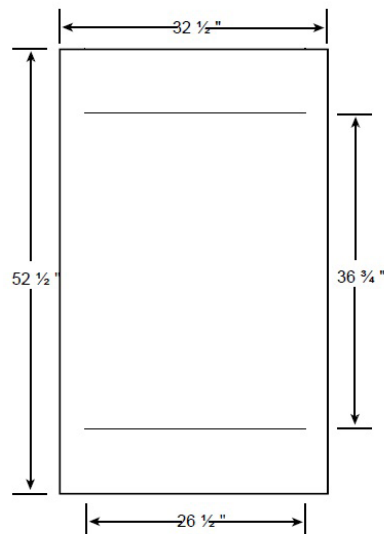


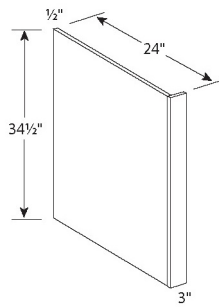
**DOUBLE OVEN**  
**SINGLE DRAWER**  
**84" - 96" CABINETS**

OC3384D  
OC3390D  
OC3396D

\*Includes overlay panel

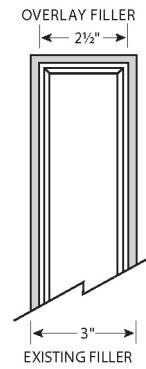
**OVEN CABINET**  
**OVERLAY PANEL**





**DISHWASHER  
BASE END PANEL**

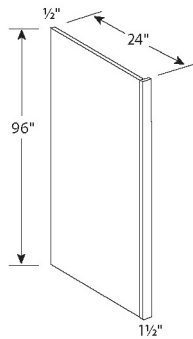
**DWR3 (REVERSIBLE)**



**OVERLAY FILLER**

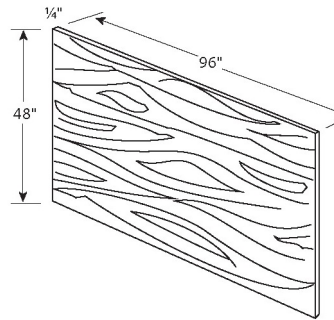
**OLF3XX**

\*NOTE: Available in various heights. See online store for sizes. Sub filler (F396) sold separately.



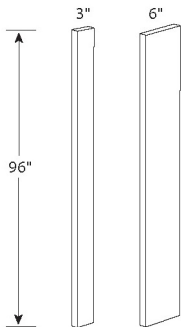
**REFRIGERATOR  
END PANEL**

**REP (REVERSIBLE)**



**LONG GRAIN PANEL  
96" x 48" x 1/4"**

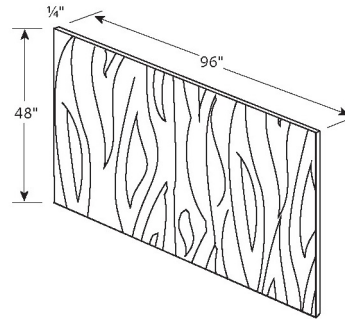
**BP4896LG**



**3" FILLER  
3/4" x 3" x 96"  
F396**

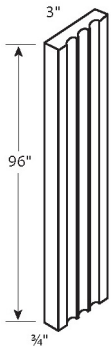
**6" FILLER  
3/4" x 6" x 96"  
F696**

NOTE: Fillers are universal length. Trim as needed.



**SHORT GRAIN PANEL  
48" x 96" x 1/4"**

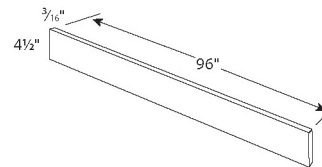
**BP9648SG**



**FLUTED FILLER  
3/4" x 3" x 96"**

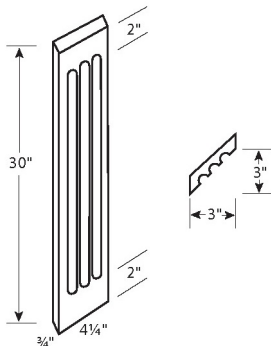
**F396FLUTE**

NOTE: Flutes run the length of the filler.  
Available in select door styles.



**TOE KICK COVER  
3/16" x 4-1/2" x 96"**

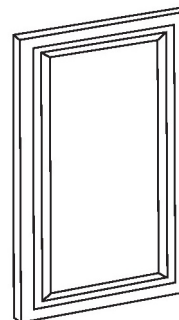
**TKS8**



**ANGLED FLUTED FILLER  
3/4" x 4-1/4" x 30"**

**AFF330**

NOTE: Three flutes run the length of the filler beginning 2" in from either end.  
Available in select door styles.



**DECORATIVE  
END PANEL DOORS**

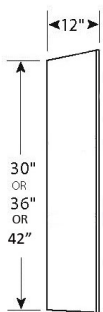
EP1230	12" x 30"
EP1236	12" x 36"
EP1242	12" x 42"
EP2430	24" x 30"

NOTE: EP's match door profile and reveals.



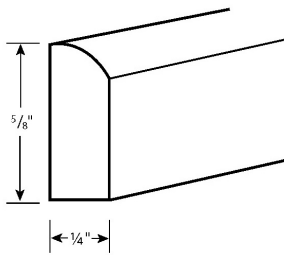
B34.5FINSIDE

NOTE: Use on exposed ends of door styles with unfinished side panels.



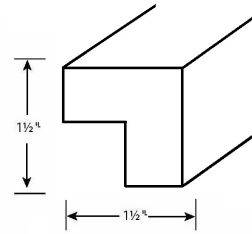
W30FINSIDE  
W36FINSIDE  
W42FINSIDE

NOTE: Use on exposed ends of door styles with unfinished side panels.



5/8" SCRIBE  
MOULDING

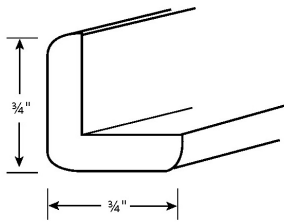
SMB



MODERN  
LIGHT RAIL  
MOULDING

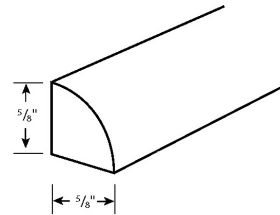
LRM8

NOTE: Available in select door styles.



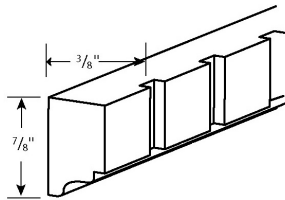
OUTSIDE CORNER  
MOULDING

OCM8



SHOE  
MOULDING

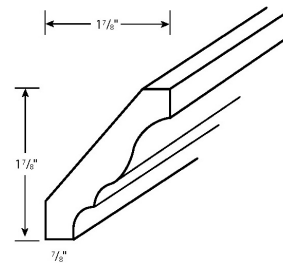
SHOE



DENTIL  
MOULDING

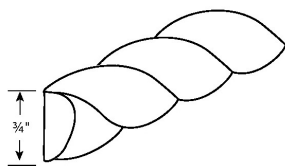
DMTIS

NOTE: Fits into the insert of RCM4S (sold separately)  
Available in select door styles.



2-3/4" CROWN  
MOULDING

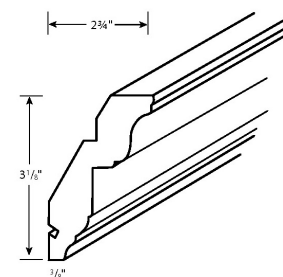
CM8



ROPE  
MOULDING

RPIS

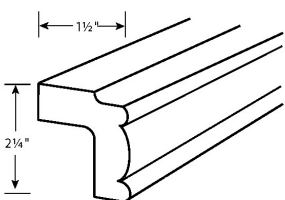
NOTE: Fits into the insert of RCM4S (sold separately)  
Available in select door styles.



ROYAL CROWN  
MOULDING

RCM4S

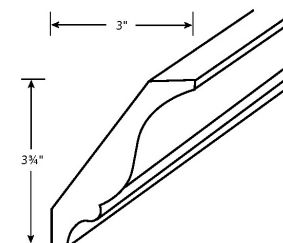
NOTE: For use with DMTIS or RPIS (sold separately).



TRADITIONAL  
LIGHT RAIL  
MOULDING

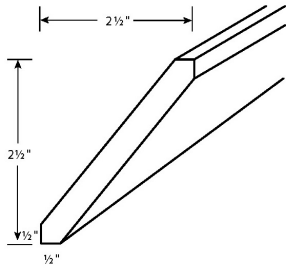
LRM8

NOTE: Available in select door styles.



LARGE CROWN  
MOULDING

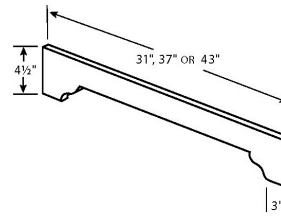
BCM8



SHAKER CROWN  
MOULDING

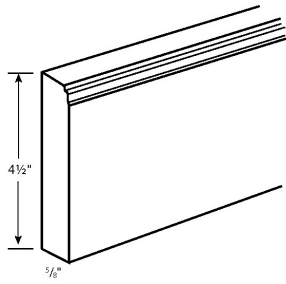
SHAKERCROWN

NOTE: Available only in Desoto  
line.



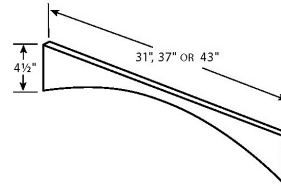
BECKONY VALANCE

V31D  
V37D  
V43D



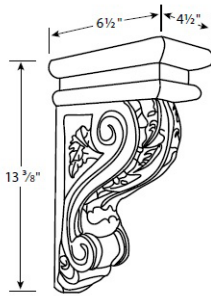
BASE  
MOULDING

BASE



ARCHED VALANCE

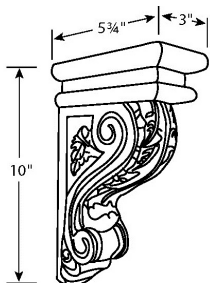
V31E  
V37E  
V43E



LARGE CORBEL

LCOR14

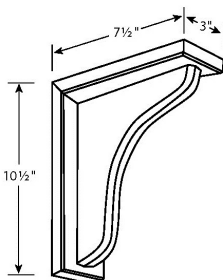
NOTE: Unglazed



MEDIUM CORBEL

MCOR10

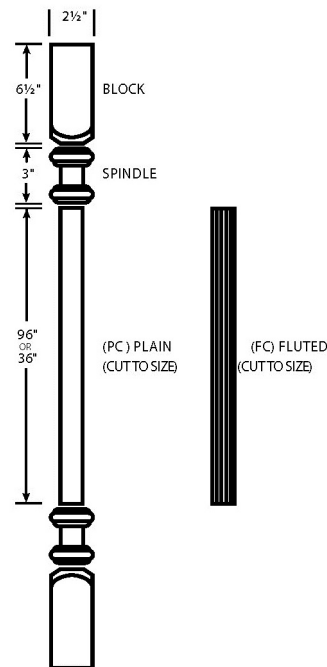
NOTE: Unglazed



PLAIN CORBEL

PLCOR10.5

NOTE: Unglazed.



COLUMN PILASTERS  
INDIVIDUAL PARTS

BLOCK

SPINDLE

PC96 (PLAIN)

FC96 (FLUTED)

NOTE: Pilasters are round and  
must be cut for applique ap-  
plications. Diameter of pilaster  
is 1-1/2". Block, spindle and  
columns are not glazed.



Harbor Distributors, Inc.  
3751 62nd Avenue N  
Pinellas Park, FL 33781  
Ph: 727.539.1517  
Fx: 727.539.1531  
[customerservice@harbordistributors.com](mailto:customerservice@harbordistributors.com)

## FRAMED SERIES CABINET CARE

The cabinetry is designed to withstand daily use associated with normal household activities and should be treated like fine furniture. Follow these recommendations to care for your cabinetry.

### **CLEANING CABINET SURFACES**

The cabinetry may be safely cleaned by using a moist, soft cloth (not a paper towel) and a mild, non-detergent soap (100 parts water and 1 part liquid dish soap is recommended). Dry wet surface immediately with a soft cloth. Do not use products that may contain chlorine, acetone, solvents or any other abrasive substance. Do not use abrasive soap pads or steel wool.

### **EXCESS MOISTURE CONTROL**

Excess moisture is one of the worst enemies of the finish on wood products. Sink, range, oven, dishwasher and baseboard areas are the most susceptible to this. It is important to promptly remove water spills and excess moisture from cabinets, using a clean soft cloth.

### **MINOR SCATCH AND NICK REPAIRS**

Minor scratches and nicks in the finish as a result of normal wear and tear can often be repaired. Touch up kits are available through our Authorized Dealers.



[www.harbordistributors.com](http://www.harbordistributors.com)

Section 5.01

## Other Products Offered





Harbor Distributors, Inc.  
3751 62nd Avenue N  
Pinellas Park, FL 33781  
Ph: 727.539.1517  
Fx: 727.539.1531  
[customerservice@harbordistributors.com](mailto:customerservice@harbordistributors.com)

## OTHER PRODUCTS OFFERED

In addition to our cabinetry, we also offer a wide selection of hardware, organizational accessories, and stand alone furniture vanities. Please see our online ordering site for full selection of products.

*[shop.harbordistributors.com](http://shop.harbordistributors.com)*



# HÄFELE







**HARBOR**  
DISTRIBUTORS

[www.harbordistributors.com](http://www.harbordistributors.com)

Section 6.01

# Warranty Program



## WARRANTY

### 10 YEAR LIMITED

All HDI Euro and Framed series products are guaranteed to the original purchaser for 10 years from the date of purchase or delivery, as proven by the invoice received from Harbor Distributors, Inc. Any notice or request for action under the guarantee must be made in writing to the authorized dealer, with whom Harbor Distributors, Inc. will agree on the intervention(s) to be made. Any interventions will be carried out by the authorized dealer. All components not supplied by Harbor Distributors, Inc. are excluded from the present guarantee. The present guarantee covers the repair or replacement of any parts that are found to be defective through the manufacturer's fault.

Excluded from the warranty are any parts that are damaged through negligence in use, incorrect assembly or installation, incorrect maintenance, or through normal wear and tear. The warranty shall not apply to any cabinetry or parts that have been subjected to alteration, modification, accident, damage in transit, abnormal use, extreme temperature, moisture levels, or abrasive cleaning chemicals. Any differences in the tones of colors and woods which may occur because of the natural variability in the raw materials or because of deliveries carried out at different times, are not considered manufacturing defects and are therefore not covered by the guarantee.

In no event is Harbor Distributors, Inc. liable for incidental, indirect, or consequential damages resulting from the use of its cabinets. This warranty does not cover the cost of assembly, installation, removal, subsequent damage, or transportation of the defective product regardless of whether the work was performed by a contractor, service company, or consumer.

Harbor Distributors, Inc. may elect to repair or replace the product with a product of equal value and complementary style if the original style is no longer available at the time of the claim. Harbor Distributors, Inc. cannot guarantee an exact match between the finish of existing product and its replacement due to the natural aging of wood.

### WARPED DOORS

Doors that are warped ¼" or less must be allowed to hang through (2) seasons before replacement will be made. Typically, the door will return to its normal flat position after conditioning to its environment.

### WOOD DOORS

Wood is a natural material and as such, is affected by environmental factors that may slightly change its appearance. As the wood ages, darkening or mellowing of the wood can be expected. Wood exhibits distinct patterns and characteristics, which contribute to its natural beauty. Variations in color and appearance of the wood due to natural characteristics are not considered defects and are not covered by this warranty. Natural aging and darkening of wood color, as well as inherent growth characteristics of the wood are not covered by this warranty.

Continued on next page

## WARRANTY (CONTINUED)

### GLAZE AWARENESS

Glazing is a hand-applied technique. Slight tonal variations and varied brush strokes should be expected. This is the artistic characteristic of hand brushed glazes.

### PAINTED FINISH DISCLAIMER

Painted cabinetry is a very desirable finish in the cabinet industry. Harbor Distributors, Inc. offers a high quality painted finish on select cabinetry. We take extra care and precaution in the packaging and shipping and handling of the finished product.

Painted finishes have a number of inherent characteristics that can present unique challenges. Because a painted finish is so smooth, imperfections are magnified. The smallest imperfection will stand out on a painted finish that would normally go unnoticed on a stained finish.

Because of these inherent characteristics, Harbor Distributors, Inc. does not guarantee their painted finishes against minor cracking, chipping or peeling, unless it is a manufacturer's defect.

### NOTE ON THERMOFOIL AND TEXTURED MELAMINE DOORS

This warranty does not apply to any thermofoil or textured melamine products installed, without the use of properly-installed heat shields, adjacent to appliances, such as ovens, ranges or dishwashers, or fixtures, such as lighting, that generate high temperatures.

### SOFT CLOSING HINGE MECHANISM

There is no warranty for the soft closing hinge mechanism. Replacement hinges can be purchased from Harbor Distributors. Contact customer service for details.

In the event that you need to file a warranty claim with us, please do so by following the policies outlined on the Damage/Warranty Replacement Program page.

## DAMAGE/WARRANTY REPLACEMENT PROGRAM

In the event that you have a damaged or warranty item, we will take the most expeditious measures to replace the damaged or warranty parts.

**NOTE: Please check the cabinet parts before assembly, as we will not replace the cabinet/part if the cabinet is assembled.**

To replace a warranty cabinet part:

1. Take clear and descriptive pictures of the damage/warranty part and DO NOT assemble cabinet before submitting your claim.
2. Fill out and submit our Warranty Claims form, found on the HDI Online Store, [www.shop.harbordistributors.com](http://www.shop.harbordistributors.com) (scroll to the bottom of the page to the footer, under 'Customer Support').
  - a. You have the option to upload your pictures directly to this form, or you can email them to [warranty@harbordistributors.com](mailto:warranty@harbordistributors.com)
3. Do not use, destroy or discard the item unless told otherwise by a staff member of Harbor Distributors.

IMPORTANT: If shipping damage occurs, note any and all damages or potential damages on the delivery receipt before you sign for the shipment.

- a. Failure to do this step results in a rejected claim.



[www.harbordistributors.com](http://www.harbordistributors.com)

## Section 7.01

# Miscellaneous





## RETURN POLICY

For all returns, including warranty replacement items, please submit our Warranty/Returns form found in the 'Customer Support' section of the HDI Online Store.

### Warranty Items Return/Replacement Guidelines:

Harbor Distributors, Inc. will accept returns for warranty items under the following circumstances:

- The cabinet must not be assembled (unless warranty is for a failure such as a hinge or glide).
- The Warranty/Returns Form must be filled out and pictures of the claim must be submitted to us either through the online form or emailed to customerservice@harbordistributors.com.
- If the item was damaged during shipping, do not use, destroy or discard the damaged or defective item, as it is the property of the freight carrier. It is required that the item be available for the shipping company to retrieve.
- If no photos are supplied, or the item is not made available to pick up, you will be charged for the replacement.

### Non-Warranty Item Returns for Credit:

Harbor Distributors, Inc. will accept returns for non warranty items and issue credit on customer's account under the following circumstances:

- Item to be returned is unopened and in brand new condition.
- Item was purchased within last 30 days.
- Customer must pay a restocking fee of 20% of the original purchasing cost of the item.

### Non-Returnable Items:

Harbor Distributors, Inc. will not accept returns for non warranty items under the following circumstances:

- Any special order item that is not stocked at our facility.
- Any item that has been opened and repackaged in a way that is not suitable for resale (i.e. taped with blue tape, duct tape, etc. or missing internal protective foam, corner blocks, tie downs, etc.).
- Any item that has been damaged from improper handling.
- Any item that has been assembled.

\*Harbor Distributors, Inc. reserves the right to inspect any item brought back for return. It is at the discretion of Harbor Distributors, Inc. to accept/refuse any item brought back for return. If a returned item is accepted by Harbor Distributors, Inc., and credit is owed to customer, a credit will be issued on the customer's account for the amount of the original sale of said item (less fees).

## Recommended Resources

### **FINISH MATERIALS**

Please purchase your extra stain supplies directly from Mohawk Finishing Products. This assures fresh product and simplifies the shipping. You can purchase Touch Up Kits directly from Harbor Distributors.

Mohawk Finishing Products  
P.O. Box 22000  
Hickory, NC 286030220

[www.mohawk-finishing.com](http://www.mohawk-finishing.com)

1-828-261-0325  
(ask to be transferred to Norm Wilson's cell phone)

### **ASSEMBLY BLOCKS**

This is our resource for bulk assembly blocks. Should you like to purchase assembly blocks in bulk please contact:

Hughes Supply

1-336-475-8146

Part # H0432, color 2308 (8,000 pieces per box)

### **ASSEMBLY TOOLS**

We use a brad nail gun (optional) and a staple gun to assemble our cabinetry. We use the brad nailer in lieu of using the peach assembly blocks included in the cabinetry. Below, is the equipment we use:

Nail Gun: Senco SLP20XP Brad Nailer. We use 3/4" brad nails to attach the face frame to the side panels.  
Staple Gun: Senco 6S0031N XtremePro , model # SFT10XP-E. We use 1/2" staples.

### **FINISHED SIDE PANEL APPLICATION**

We use 3M Hi-Strength 90 Spray Adhesive to apply our finished side panels. Installation is easy. Spray adhesive on both surfaces, allow time for adhesive to set up, and then apply the finished side panel.

3M Hi-Strength 90 Adhesive can be found online or at local hardware stores.





Harbor Distributors, Inc.  
3751 62nd Avenue N  
Pinellas Park, FL 33781  
Ph: 727.539.1517  
Fx: 727.539.1531  
customerservice@harbordistributors.com

COMPANY: \_\_\_\_\_

DOOR STYLE: \_\_\_\_\_

JOB NAME: \_\_\_\_\_

## \*\*THIS FORM IS NOT FOR SUBMITTING ORDERS\*\*

SUBMIT ORDERS AT [WWW.SHOP.HARBORDISTRIBUTORS.COM](http://WWW.SHOP.HARBORDISTRIBUTORS.COM). THIS FORM IS INTENDED SOLELY FOR THE PURPOSE OF QUICKLY QUOTING A JOB USING YOUR DEALER MULTIPLIER OR A CUSTOMER MULTIPLIER OF YOUR CHOOSING

WALLS FRIDGE/MW		
ITEM	QTY	PRICE
W3012		251
W3015		266
W3018		288
W3021		388
W3024		420
W3027		451
W3315		294
W3612		271
W361224		477
W3615		301
W3618		321
W361824		560
W3624		474
W362424		565

WALLS 30"		
ITEM	QTY	PRICE
W0930		212
W1230		251
W1530		270
W1830		307
W2130		342
W2430		438
W2730		451
W3030		471
W3330		524
W3630		547

WALLS 36"		
ITEM	QTY	PRICE
W0936		238
W1236		271
W1536		309
W1836		349
W2136		388
W2436		471
W2736		508
W3036		555
W3336		594
W3636		640

WALLS 42"		
ITEM	QTY	PRICE
W0942		280
W1242		321
W1542		363
W1842		412
W2142		459
W2442-2		541
W2742		613
W3042		656
W3342		702
W3642		755

WALLS CORNER/SPECIALTY		
ITEM	QTY	PRICE
CW2430		495
CW2436		539
CW2442		667
W3012LIFT		483
W3612LIFT		506
W2415LIFT		471
W3015LIFT		496
W3615LIFT		521
W2418LIFT		487
W3018LIFT		512
W3618LIFT		537
W2421LIFT		503
W3024LIFT		563
W3624LIFT		586
W3030LIFT		708

BASE DR/DWR		
ITEM	QTY	PRICE
B12		458
B15		485
B18		519
B21		551
B24		629
B27		715
B30		732
B33		782
B36		798
DB12-3		793
DB15-3		818

BASE FULL HEIGHT DOOR (FHD)		
ITEM	QTY	PRICE
B09FHD		282
B12FHD		316
B15FHD		362
B18FHD		400
B21FHD		433
B24FHD		488
B27FHD		511
B30FHD		554
B33FHD		587
B36FHD		615

DRAWER BASE		
ITEM	QTY	PRICE
DB12-2		670
DB15-2		695
DB18-2		720
DB21-2		745
DB24-2		783
DB30-2		848
DB33-2		870
DB36-2		919
DB15-2SP		860
DB18-2SP		887
DB21-2SP		914
DB24-2SP		967
DB30-2SP		1025
DB33-2SP		1050
DB36-2SP		1100
DB18-3		845
DB21-3		875
DB24-3		936
DB30-3		1007
DB33-3		1058
DB36-3		1132
DB18-4		968
DB21-4		1005
DB24-4		1088

BASE CORNER/SINK/SEPCIALTY		
ITEM	QTY	PRICE
BLINDB42		587
BM30		778
ER36		820
ER36LS		1,342
SB30		657
SB33		690
SB36		718

VANITY		
ITEM	QTY	PRICE
V24FHD		468
V27FHD		491
V30FHD		534
V33FHD		567
V36FHD		595
VDB12-3		790
VDB15-3		815
VDB18-3		840
VDB21-3		870
VDB24-3		931

TALL PANTRY/OVEN		
ITEM	QTY	PRICE
P1884		1,024
P1890		1,096
P1896		1,137
P2484		1,214
P2490		1,318
P2496		1,366
P3084		1,382
P3090		1,487
P3096		1,544
OC3384-1		1,411
OC3384-3		1,768
OC3390-1		1,498
OC3390-3		1,792
OC3396-1		1,565
OC3396-3		1,851



Harbor Distributors, Inc.  
 3751 62nd Avenue N  
 Pinellas Park, FL 33781  
 Ph: 727.539.1517  
 Fx: 727.539.1531  
[customerservice@harbordistributors.com](mailto:customerservice@harbordistributors.com)

COMPANY: \_\_\_\_\_ -  
 JOB NAME: \_\_\_\_\_ -

DOOR STYLE: \_\_\_\_\_ -

## INTEGRATED SIDE FINISHED LEFT CABINETS

WALLS FRIDGE/MW		
ITEM	QTY	PRICE
W3012-FL		315
W3015-FL		336
W3018-FL		363
W3021-FL		400
W3024-FL		508
W3027-FL		545
W3315-FL		364
W3612-FL		335
W361224-FL		564
W3615-FL		371
W3618-FL		396
W361824-FL		671
W3624-FL		562
W362424-FL		700

WALLS 30"		
ITEM	QTY	PRICE
W0930-FL		307
W1230-FL		353
W1530-FL		365
W1830-FL		402
W2130-FL		437
W2430-FL		533
W2730-FL		546
W3030-FL		566
W3330-FL		619
W3630-FL		642

WALLS 36"		
ITEM	QTY	PRICE
W0936-FL		343
W1236-FL		376
W1536-FL		414
W1836-FL		454
W2136-FL		493
W2436-FL		576
W2736-FL		613
W3036-FL		660
W3336-FL		699
W3636-FL		745

WALLS 42"		
ITEM	QTY	PRICE
W0942-FL		395
W1242-FL		436
W1542-FL		478
W1842-FL		527
W2142-FL		574
W2442-2-FL		656
W2742-FL		728
W3042-FL		771
W3342-FL		817
W3642-FL		870

WALLS CORNER/SPECIALTY		
ITEM	QTY	PRICE
CW2430-FL		590
CW2436-FL		644
CW2442-FL		782
W3012LIFT-FL		547
W3612LIFT-FL		570
W2415LIFT-FL		541
W3015LIFT-FL		566
W3615LIFT-FL		591
W2418LIFT-FL		562
W3018LIFT-FL		587
W3618LIFT-FL		612
W2421LIFT-FL		584
W3024LIFT-FL		651
W3624LIFT-FL		674
W3030LIFT-FL		803

TALL PANTRY/OVEN		
ITEM	QTY	PRICE
P1884-FL		1326
P1890-FL		1418
P1896-FL		1479
P2484-FL		1516
P2490-FL		1640
P2496-FL		1708
P3084-FL		1684
P3090-FL		1809
P3096-FL		1886
OC3384-1-FL		1713
OC3384-3-FL		2070
OC3390-1-FL		1820
OC3390-3-FL		2114
OC3396-1-FL		1907
OC3396-3-FL		2193

VANITY		
ITEM	QTY	PRICE
V24FHD-FL		613
V27FHD-FL		636
V30FHD-FL		679
V33FHD-FL		712
V36FHD-FL		740
VDB12-3-FL		935
VDB15-3-FL		960
VDB18-3-FL		985
VDB21-3-FL		1,015
VDB24-3-FL		1,076



Harbor Distributors, Inc.  
3751 62nd Avenue N  
Pinellas Park, FL 33781  
Ph: 727.539.1517  
Fx: 727.539.1531

customerservice@harbordistributors.com

COMPANY: \_\_\_\_\_ -

DOOR STYLE: \_\_\_\_\_ -

JOB NAME: \_\_\_\_\_ -

## INTEGRATED SIDE FINISHED RIGHT CABINETS

WALLS FRIDGE/MW		
ITEM	QTY	PRICE
W3012-FR		315
W3015-FR		336
W3018-FR		363
W3021-FR		400
W3024-FR		508
W3027-FR		545
W3315-FR		364
W3612-FR		335
W361224-FR		564
W3615-FR		371
W3618-FR		396
W361824-FR		671
W3624-FR		562
W362424-FR		700

WALLS 30"		
ITEM	QTY	PRICE
W0930-FR		307
W1230-FR		353
W1530-FR		365
W1830-FR		402
W2130-FR		437
W2430-FR		533
W2730-FR		546
W3030-FR		566
W3330-FR		619
W3630-FR		642

WALLS 36"		
ITEM	QTY	PRICE
W0936-FR		343
W1236-FR		376
W1536-FR		414
W1836-FR		454
W2136-FR		493
W2436-FR		576
W2736-FR		613
W3036-FR		660
W3336-FR		699
W3636-FR		745

WALLS 42"		
ITEM	QTY	PRICE
W0942-FR		395
W1242-FR		436
W1542-FR		478
W1842-FR		527
W2142-FR		574
W2442-2-FR		656
W2742-FR		728
W3042-FR		771
W3342-FR		817
W3642-FR		870

WALLS CORNER/SPECIALTY		
ITEM	QTY	PRICE
CW2430-FR		590
CW2436-FR		644
CW2442-FR		782
W3012LIFT-FR		547
W3612LIFT-FR		570
W2415LIFT-FR		541
W3015LIFT-FR		566
W3615LIFT-FR		591
W2418LIFT-FR		562
W3018LIFT-FR		587
W3618LIFT-FR		612
W2421LIFT-FR		584
W3024LIFT-FR		651
W3624LIFT-FR		674
W3030LIFT-FR		803

TALL PANTRY/OVEN		
ITEM	QTY	PRICE
P1884-FR		1326
P1890-FR		1418
P1896-FR		1479
P2484-FR		1516
P2490-FR		1640
P2496-FR		1708
P3084-FR		1684
P3090-FR		1809
P3096-FR		1886
OC3384-1-FR		1713
OC3384-3-FR		2070
OC3390-1-FR		1820
OC3390-3-FR		2114
OC3396-1-FR		1907
OC3396-3-FR		2193

VANITY		
ITEM	QTY	PRICE
V24FHD-FR		613
V27FHD-FR		636
V30FHD-FR		679
V33FHD-FR		712
V36FHD-FR		740
VDB12-3-FR		935
VDB15-3-FR		960
VDB18-3-FR		985
VDB21-3-FR		1,015
VDB24-3-FR		1,076



Harbor Distributors, Inc.  
 3751 62nd Avenue N  
 Pinellas Park, FL 33781  
 Ph: 727.539.1517  
 Fx: 727.539.1531  
 customerservice@harbordistributors.com

COMPANY: \_\_\_\_\_ -  
 JOB NAME: \_\_\_\_\_ -

DOOR STYLE: \_\_\_\_\_ -

## INTEGRATED SIDE FINISHED BOTH CABINETS

WALLS FRIDGE/MW		
ITEM	QTY	PRICE
W3012-FB		379
W3015-FB		406
W3018-FB		438
W3021-FB		481
W3024-FB		596
W3027-FB		639
W3315-FB		434
W3612-FB		399
W361224-FB		651
W3615-FB		441
W3618-FB		471
W361824-FB		782
W3624-FB		650
W362424-FB		835

WALLS 42"		
ITEM	QTY	PRICE
W0942-FB		510
W1242-FB		551
W1542-FB		593
W1842-FB		642
W2142-FB		689
W2442-2-FB		771
W2742-FB		843
W3042-FB		886
W3342-FB		932
W3642-FB		985

TALL PANTRY/OVEN		
ITEM	QTY	PRICE
P1884-FB		1628
P1890-FB		1740
P1896-FB		1821
P2484-FB		1818
P2490-FB		1962
P2496-FB		2050
P3084-FB		1986
P3090-FB		2131
P3096-FB		2228
OC3384-1-FB		2015
OC3384-3-FB		2372
OC3390-1-FB		2142
OC3390-3-FB		2436
OC3396-1-FB		2249
OC3396-3-FB		2535

WALLS CORNER/SPECIALTY		
ITEM	QTY	PRICE
CW2430-FB		685
CW2436-FB		749
CW2442-FB		897
W3012LIFT-FB		611
W3612LIFT-FB		634
W2415LIFT-FB		611
W3015LIFT-FB		636
W3615LIFT-FB		661
W2418LIFT-FB		637
W3018LIFT-FB		662
W3618LIFT-FB		687
W2421LIFT-FB		665
W3024LIFT-FB		739
W3624LIFT-FB		762
W3030LIFT-FB		898

WALLS 30"		
ITEM	QTY	PRICE
W0930-FB		402
W1230-FB		448
W1530-FB		460
W1830-FB		497
W2130-FB		532
W2430-FB		628
W2730-FB		641
W3030-FB		661
W3330-FB		714
W3630-FB		737

WALLS 36"		
ITEM	QTY	PRICE
W0936-FB		448
W1236-FB		481
W1536-FB		519
W1836-FB		559
W2136-FB		598
W2436-FB		681
W2736-FB		718
W3036-FB		765
W3336-FB		804
W3636-FB		850

VANITY		
ITEM	QTY	PRICE
V24FHD-FB		758
V27FHD-FB		781
V30FHD-FB		824
V33FHD-FB		857
V36FHD-FB		885
VDB12-3-FB		1,080
VDB15-3-FB		1,105
VDB18-3-FB		1,130
VDB21-3-FB		1,160
VDB24-3-FB		1,221



Harbor Distributors, Inc.  
 3751 62nd Avenue N  
 Pinellas Park, FL 33781  
 Ph: 727.539.1517  
 Fx: 727.539.1531  
 customerservice@harbordistributors.com

COMPANY: \_\_\_\_\_ -  
 JOB NAME: \_\_\_\_\_ -

DOOR STYLE: \_\_\_\_\_ -

**\*\*THIS FORM IS NOT FOR SUBMITTING ORDERS\*\***

SUBMIT ORDERS AT [WWW.SHOP.HARBORDISTRIBUTORS.COM](http://WWW.SHOP.HARBORDISTRIBUTORS.COM). THIS FORM IS INTENDED SOLELY FOR THE PURPOSE OF QUICKLY QUOTING A JOB USING YOUR DEALER MULTIPLIER OR A CUSTOMER MULTIPLIER OF YOUR CHOOSING

FILLERS		
ITEM	QTY	PRICE
TF4.5		85
OLF330		48
OLF336		50
OLF342		53
OLF484		88
OLF490		92
OLF496		95
OLF696		105

ROLL OUT DRAWERS		
ITEM	QTY	PRICE
ROT18		150
ROT21		157
ROT24		170
ROT27		175
ROT30		186
ROT33		190
ROT36		197

PANELS/MOULDING/TOE KICK		
ITEM	QTY	PRICE
DWPANEL		135
EP2530		145
EP1330		95
EP1336		105
EP1342		115
EP2784		302
EP2790		322
EP2796		342
LRM8		225
PANEL4296		537
REP		372
TKS8		44
TKS5		32

Sample Doors/Brochures		
ITEM	QTY	PRICE
Cristallo White		20
Tuscan Espresso		20
Tuscan Smoke		20
Booklet Brochure		20
Trifold Brochure		5

NOTES/COMMENTS

Total Summary	
Total Retail	\$0.00
<b>ENTER MULTIPLIER</b>	1.00
<b>ENTER TAX (if applicable)</b>	
<b>ARE WE SHIPPING THIS ORDER TO YOU?</b>	
Weight	0
Shipping Charges	100
Total After Discounts & Shipping	
\$100.00	

\*Not all items are available in every door style. Please check [shop.harbordistributors.com](http://shop.harbordistributors.com) for item availability



Harbor Distributors, Inc.  
3751 62nd Avenue N  
Pinellas Park, FL 33781  
Ph: 727.539.1517  
Fx: 727.539.1531  
customerservice@harbordistributors.com

COMPANY: \_\_\_\_\_

DOOR STYLE: \_\_\_\_\_

JOB NAME: \_\_\_\_\_

## \*\*THIS FORM IS NOT FOR SUBMITTING ORDERS\*\*

SUBMIT ORDERS AT [WWW.SHOP.HARBORDISTRIBUTORS.COM](http://WWW.SHOP.HARBORDISTRIBUTORS.COM). THIS FORM IS INTENDED SOLELY FOR THE PURPOSE OF QUICKLY QUOTING A JOB USING YOUR DEALER MULTIPLIER OR A CUSTOMER MULTIPLIER OF YOUR CHOOSING

WALLS MISC. HEIGHTS		
ITEM	QTY	PRICE
W3012		154
W3612-24		308
W3612		171
W3912		188
W3015		171
W3315		186
W3615		190
W3018		185
W3618		204
W361824		363
W3021		270
W3024		270
W3624		303
W362424		363
W3027		297

WALLS 30"		
ITEM	QTY	PRICE
W930		134
W1230		154
W1530		173
W1830		198
W2130		221
W2430-2		285
W2730		294
W3030		304
W3330		339
W3630		351
W3930		387
W4230		413

WALLS 36"		
ITEM	QTY	PRICE
W936		152
W1236		174
W1536		199
W1836		226
W2136		252
W2436-2		307
W2736		332
W3036		360
W3336		386
W3636		413
W3936		441
W4236		470

WALLS 42"		
ITEM	QTY	PRICE
W942		180
W1242		207
W1542		235
W1842		268
W2142		299
W2442-2		354
W2742		395
W3042		427
W3342		458
W3642		490

WALLS CORNERS AND BLINDS		
ITEM	QTY	PRICE
BLINDW2430		227
BLINDW3030		279
BLINDW3630		320
BLINDW2436		260
BLINDW3036		308
BLINDW3636		356
BLINDW3042		376
BLINDW3642		448
CW2430		330
CW2436		371
CW2736		424
CW2442		470
CW2742		503

BASE CABINETS		
ITEM	QTY	PRICE
B9		194
B12		275
B15		299
B18		322
B21		348
B24		416
B27		480
B30		493
B33		534
B36		545
B39		587
B42		616
BLINDB36		446
BLINDB42		519
BLINDB48		569

BASE CABINETS (CONTINUED)		
ITEM	QTY	PRICE
DB12		429
DB15		472
DB18		505
DB21		537
DB24		573
DB30		695
DB36		722
DSB42+		655
ER33		557
ER36		562
LSK KIT (2)		325
SB30		337
SB33		356
SB36		366
SB42		420
DDB18		409

TALL CABINETS		
ITEM	QTY	PRICE
P1884		697
P1890		752
P1896		783
P2484		864
P2490		892
P2496		959
OC3384D		862
OC3390D		919
OC3396D		996

SPECIALTY ITEMS		
ITEM	QTY	PRICE
WCU30		107
WQR630		75
WQR642		96
WR3018		241
WR1830		241
AGD2418-BD		185
ADAG		211
TAB12FHDL		385
TAB12FHDR		385
BM3024		634
MWS301812		459
SHELF1296NAT		90
SHELF1296FIN		90

VANITY CABINETS		
ITEM	QTY	PRICE
KD30		176
KD36		200
V24		286
V27		301
V30		312
V33		343
V36		364
V42		411
VDB12		422
VDB15		454
VDB18		486
VDB21		518
VDB24		551
VDB60		921
VB12		257
VB15		279
VB18		300
VS36		520
VS42		574
VS48		639
VS60		791
VSDL30		536
VSDR30		536
VSDL36		601
VSDR36		601

ROLL OUT DRAWERS		
ITEM	QTY	PRICE
ROT B15		92
ROT B18		98
ROT B21		104
ROT B24		110
ROT B27		113
ROT B30		120
ROT B33		126
ROT B36		143



Harbor Distributors, Inc.  
3751 62nd Avenue N  
Pinellas Park, FL 33781  
Ph: 727.539.1517  
Fx: 727.539.1531  
customerservice@harbordistributors.com

COMPANY: \_\_\_\_\_ -  
JOB NAME: \_\_\_\_\_ -

DOOR STYLE: \_\_\_\_\_ -

## \*\*THIS FORM IS NOT FOR SUBMITTING ORDERS\*\*

SUBMIT ORDERS AT [WWW.SHOP.HARBORDISTRIBUTORS.COM](http://WWW.SHOP.HARBORDISTRIBUTORS.COM). THIS FORM IS INTENDED SOLELY FOR THE PURPOSE OF QUICKLY QUOTING A JOB USING YOUR DEALER MULTIPLIER OR A CUSTOMER MULTIPLIER OF YOUR CHOOSING

DECORATIVE DOORS		
ITEM	QTY	PRICE
EP1230		75
EP1236		96
EP1242		105
EP2430		149

MULLION DOORS		
ITEM	QTY	PRICE
MD1530		101
MD1830		125
MD2430		174
MD1536		126
MD1836		154
MD1542		142
MD1842		176
MD2436		222
MD2442		224
MD3030		202
MD3036		251
MD3042		270
MD3630		251
MD3636		307
MD3642		351

FILLERS		
ITEM	QTY	PRICE
AFF330		50
F396FLUTE		112
F396		52
F696		102
OLF312		15
OLF315		20
OLF330		33
OLF336		40
OLF342		44
OLF384		103
OLF396		130

MOULDINGS		
ITEM	QTY	PRICE
BASE		111
BCM8		189
CM8		65
COV		189
DMTIS		28
LRM8		175
OCM8		24
RCM4S		161
RPIS		26
SHAKER CROWN		116
SHOE		39
SMB		10
TKS8		17

PANELING/END PANELS		
ITEM	QTY	PRICE
BP48x96LG		182
BP96x48SG		182
DWR3		77
REP1.5x96		216

VALANCES		
ITEM	QTY	PRICE
V31D		59
V37D		64
V43D		70
V31E		59
V37E		64
V43E		70

MISC. DECORATIVE		
ITEM	QTY	PRICE
BLOCK		41
SPINDLE		28
FC96		210
PC96		194
LCOR14		248
MCOR10		222
PLCOR10.5		39
Touch Up Kit		28

Finished Side Panels For Select Doors		
Only need for exposed sides		
ITEM	QTY	PRICE
B34.5FINSIDE		47
W30FINSIDE		20
W36FINSIDE		25
W42FINSIDE		29

Sample Doors/Brochures		
ITEM	QTY	PRICE
Desoto Espresso		17
Desoto White		17
Havana Café		17
Madeira Cherry		17
Pasadena Linen		17
Booklet Brochure		20
Trifold Brochure		5

<h3>NOTES/COMMENTS:</h3>
--------------------------

Total Summary	
Total Retail	\$0.00
ENTER YOUR MULTIPLIER	1.00
ENTER TAX (if applicable)	
ARE WE SHIPPING THIS ORDER TO YOU?	
Weight	0
Shipping Charges	\$100.00
Total After Discounts & Shipping	
\$100.00	

\*Not all items are available in every door style. Please check [shop.harbordistributors.com](http://shop.harbordistributors.com) for item availability





customerservice@harbordistributors.com

[illegible]



**HARBOR**  
**DISTRIBUTORS**

3751 62 Avenue North  
Pinellas Park, FL 33781

[www.harbordistributors.com](http://www.harbordistributors.com)

NOTICE: Harbor Distributors, Inc. reserves the right to make specification changes for continued product improvement.  
NOTICE: Due to printing limitations, color pictures cannot be guaranteed to exactly match the actual cabinet material.